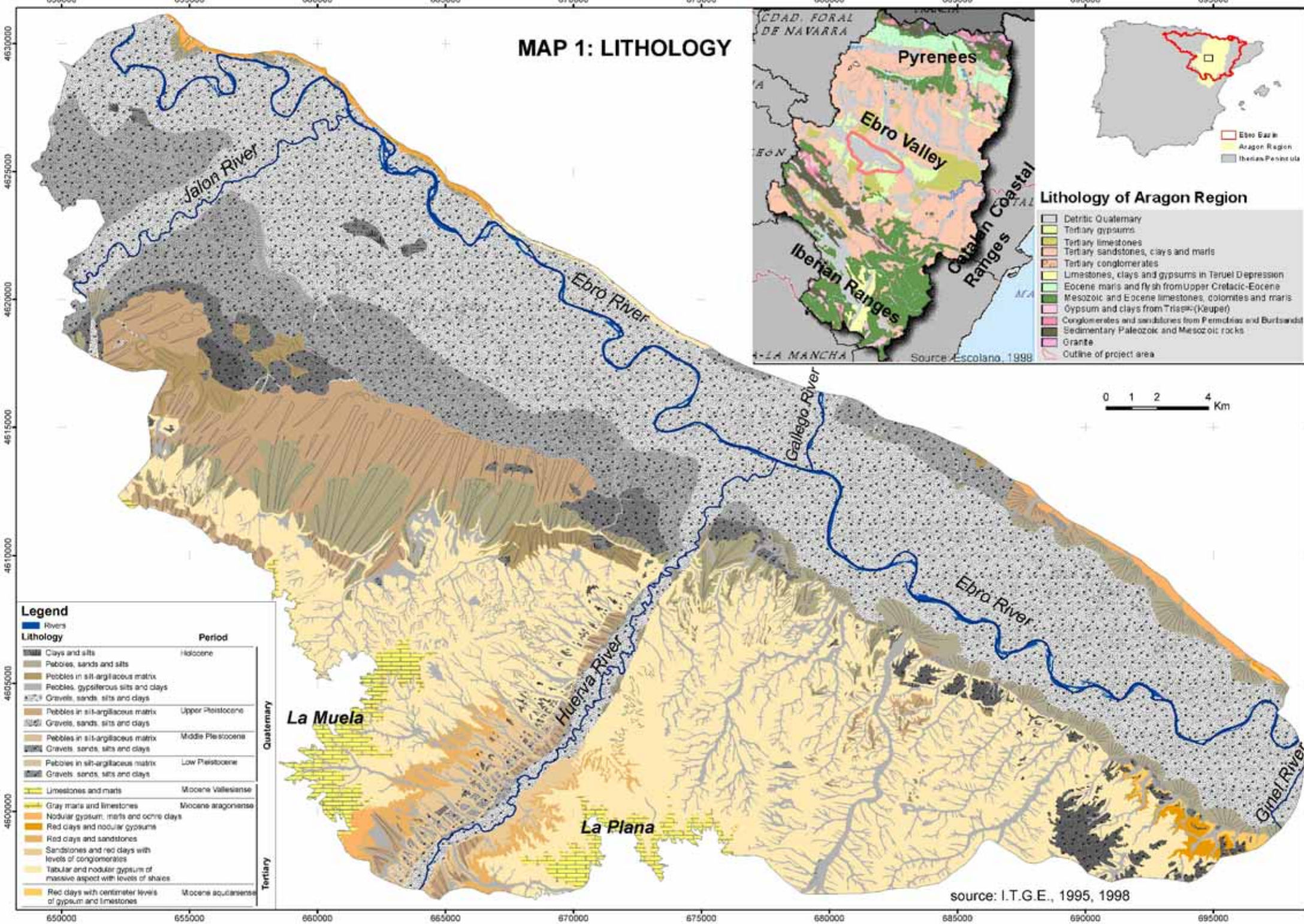


## **10. Appendix 2: Maps**

# MAP 1: LITHOLOGY



### Lithology of Aragon Region

- Detritic Quaternary
- Tertiary gypsoms
- Tertiary limestones
- Tertiary sandstones, clays and marls
- Tertiary conglomerates
- Limestones, clays and gypsoms in Taruel Depression
- Eocene marls and flysh from Upper Cretacic-Eocene
- Mesozoic and Eocene limestones, coelimites and marls
- Gypsum and clays from Trilser-(Keuper)
- Conglomerates and sandstones from Permian and Buntsandstein
- Sedimentary Paleozoic and Mesozoic rocks
- Granite
- Outline of project area

Legend		
	Rivers	
Lithology		
Lithology	Period	
	Clays and silts	Holocene
	Pebbles, sands and silts	
	Pebbles in silt-argillaceous matrix	
	Pebbles, gypsiferous silts and clays	
	Gravels, sands, silts and clays	Upper Pleistocene
	Pebbles in silt-argillaceous matrix	
	Gravels, sands, silts and clays	Middle Pleistocene
	Pebbles in silt-argillaceous matrix	
	Gravels, sands, silts and clays	Low Pleistocene
	Pebbles in silt-argillaceous matrix	
	Gravels, sands, silts and clays	Miocene Vallesense
	Limestones and marls	
	Gray marls and limestones	Miocene aragonense
	Nodular gypsum, marls and ocre days	
	Red clays and nodular gypsums	Miocene aquitanense
	Red clays and sandstones	
	Sandstones and red clays with levels of conglomerates	Miocene aquitanense
	Tabular and nodular gypsum of massive aspect with levels of shales	
	Red clays with centimeter levels of gypsum and limestones	Miocene aquitanense



source: I.T.G.E., 1995, 1998