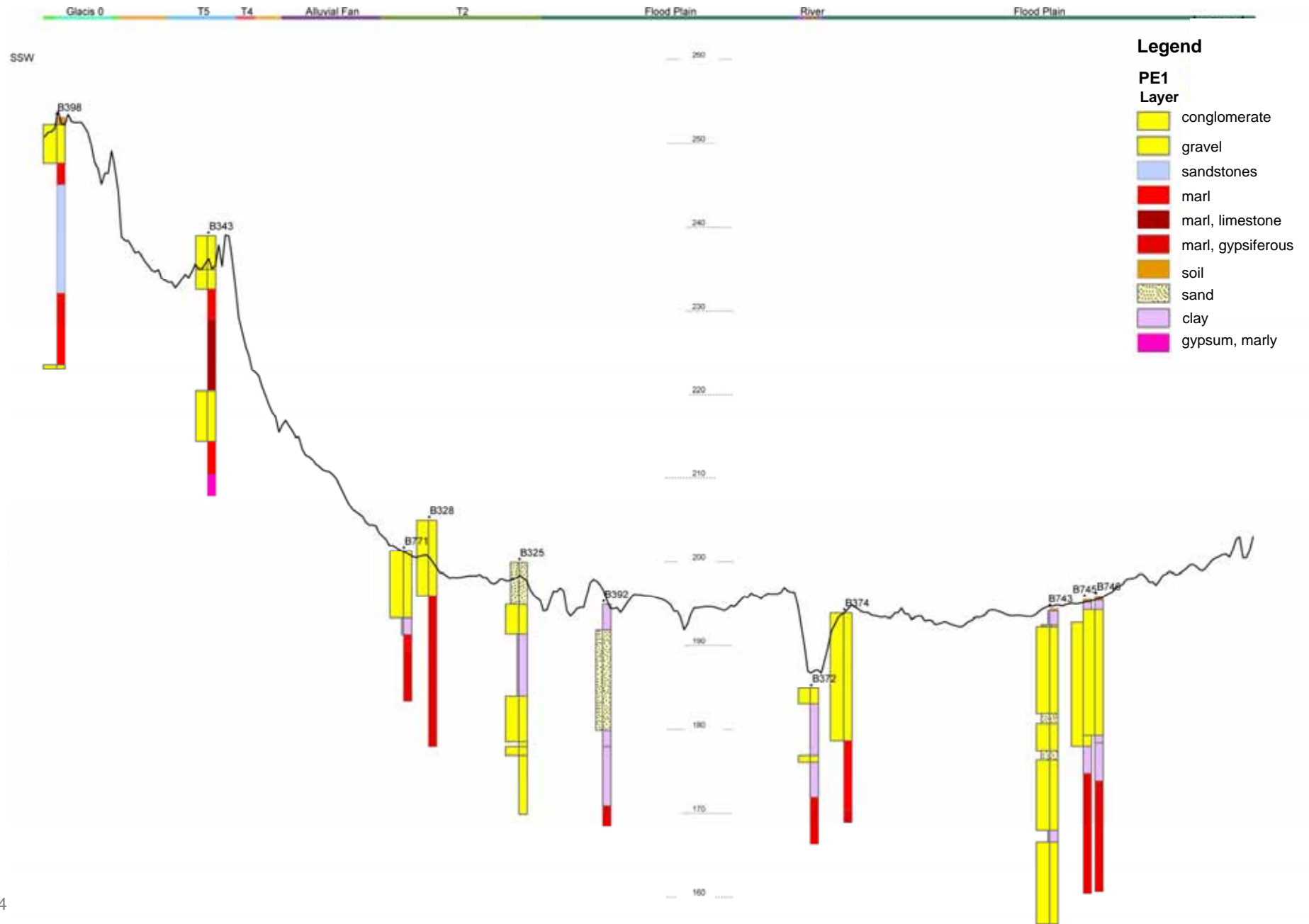
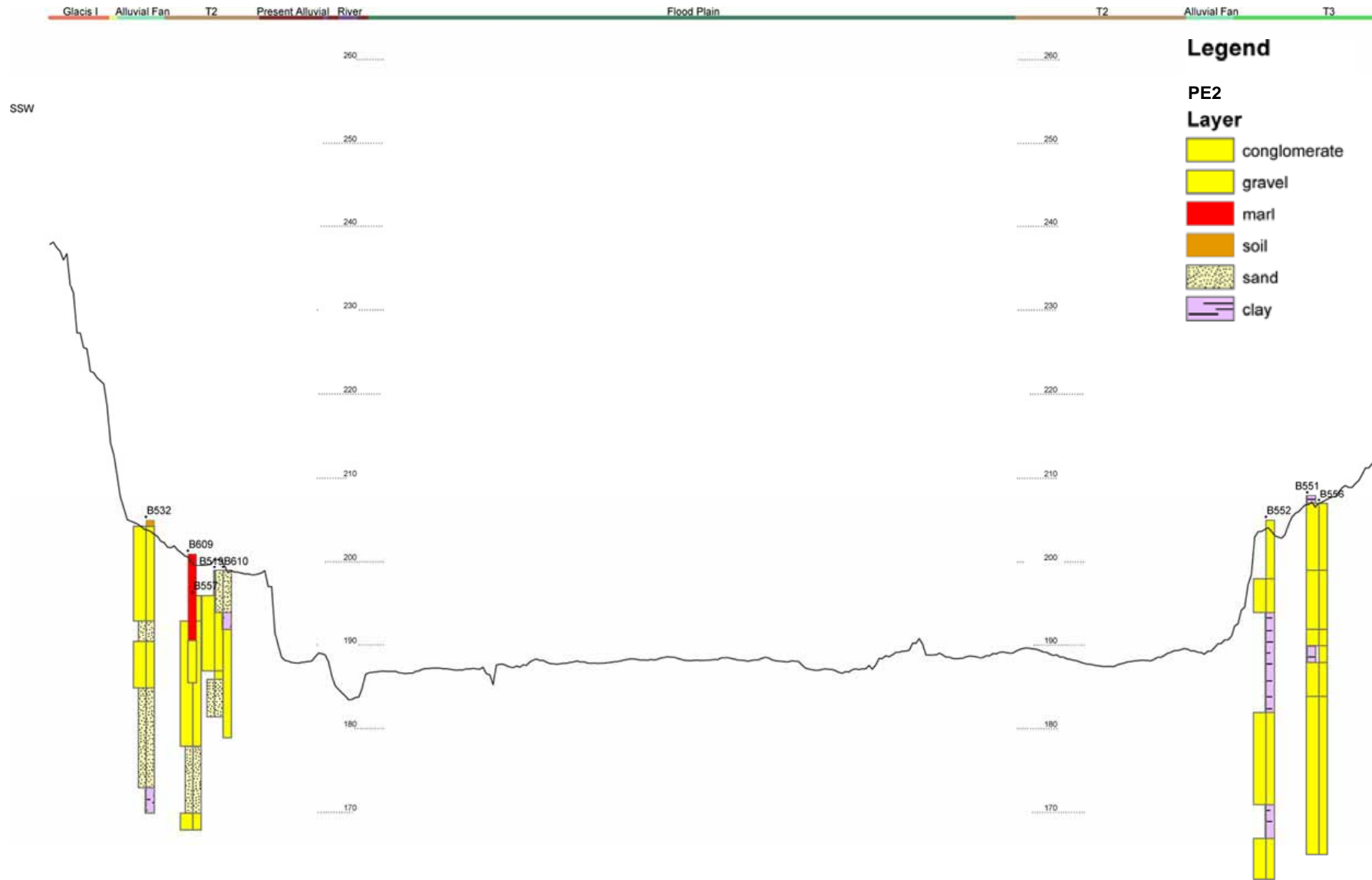


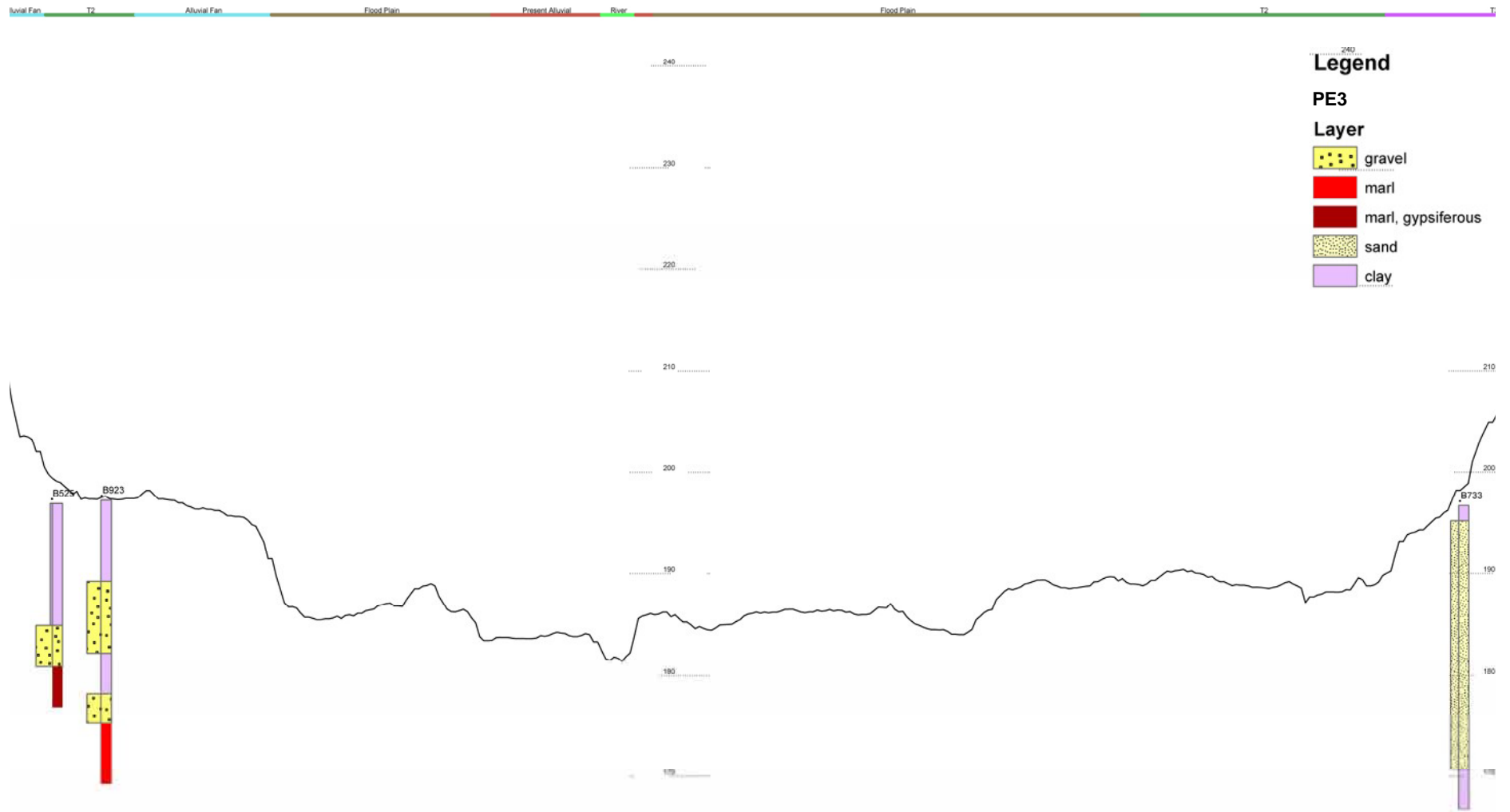
9. Appendix 1: Profiles

The profiles presented were developed by Crisanto silva and Pedro Gamero, supervised by Oswald Marinoni. The location of the profiles can be seen in Map 7. the identifiers of the profiles in the map (PE1, PE2 and so on) are shown in their legends.

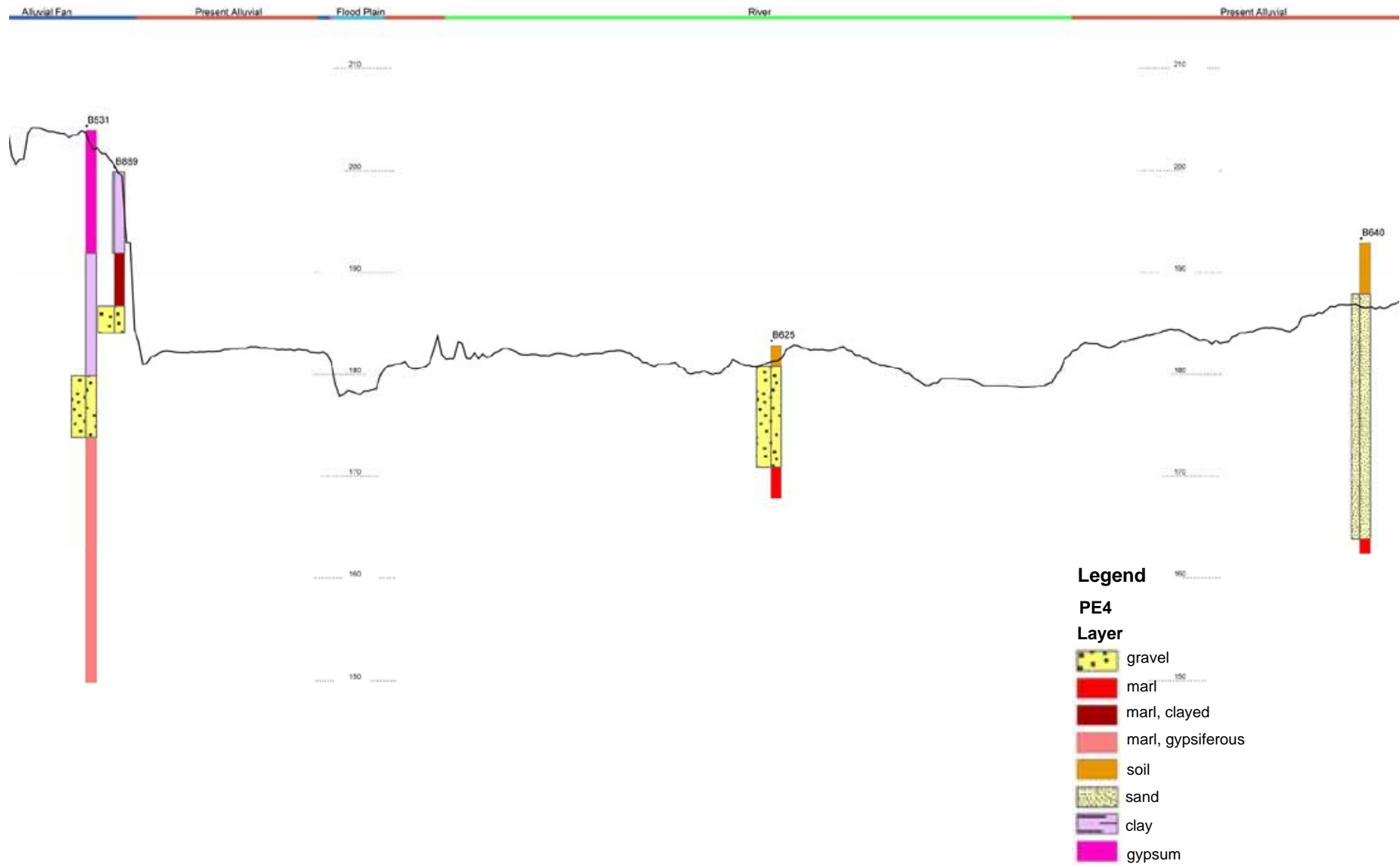


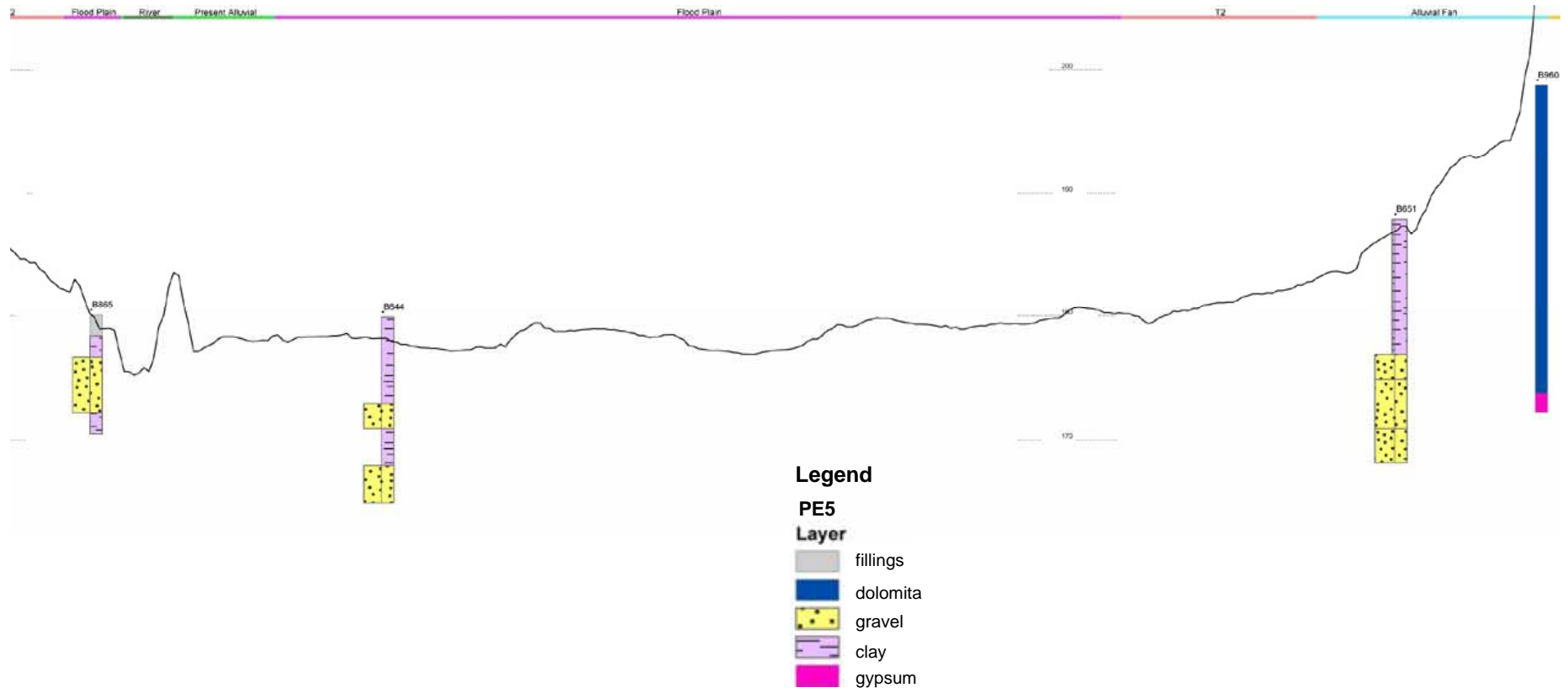
Geo-resources and geo-hazards mapping for a sustainable development in the surrounding of Zaragoza (Spain)



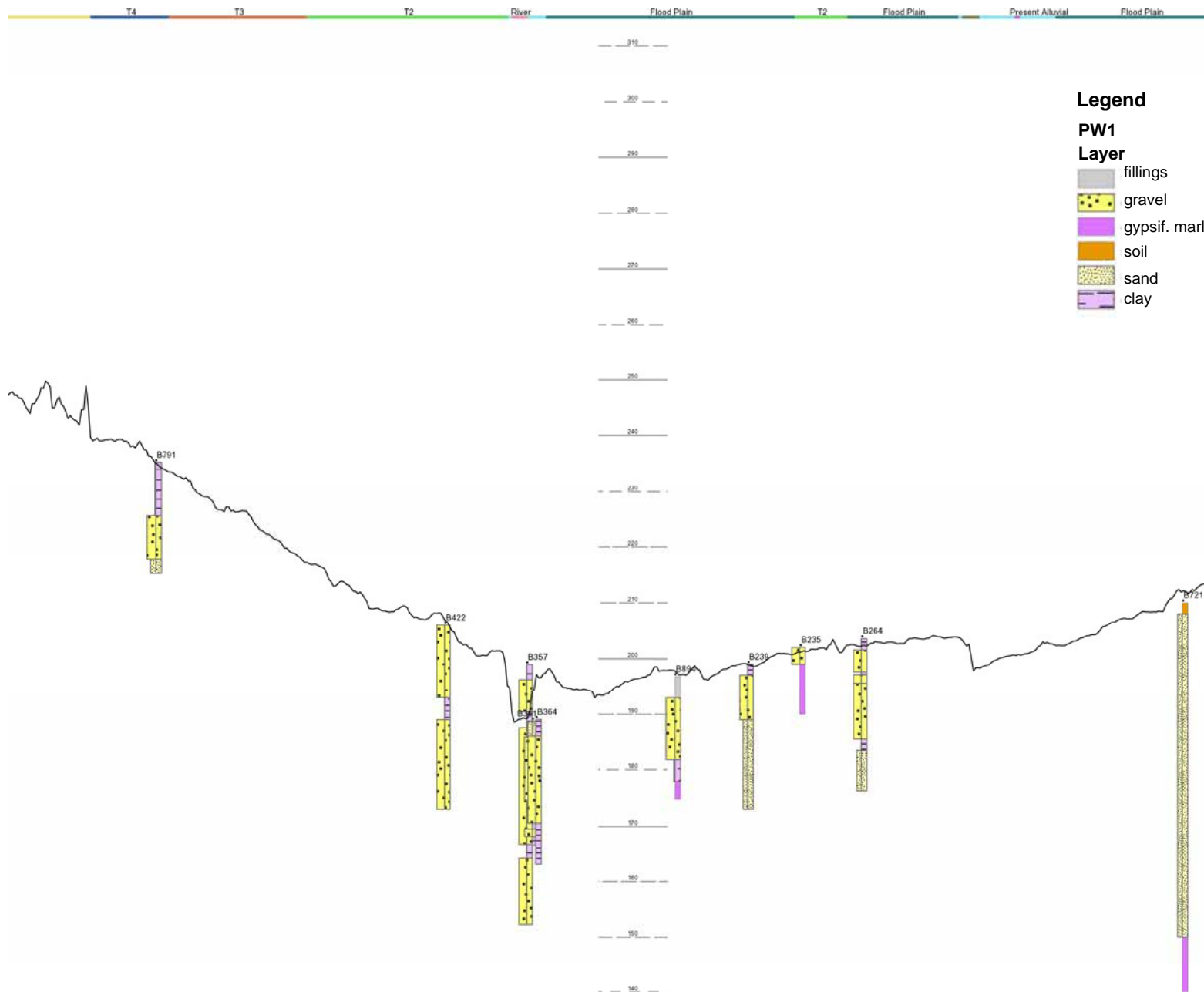


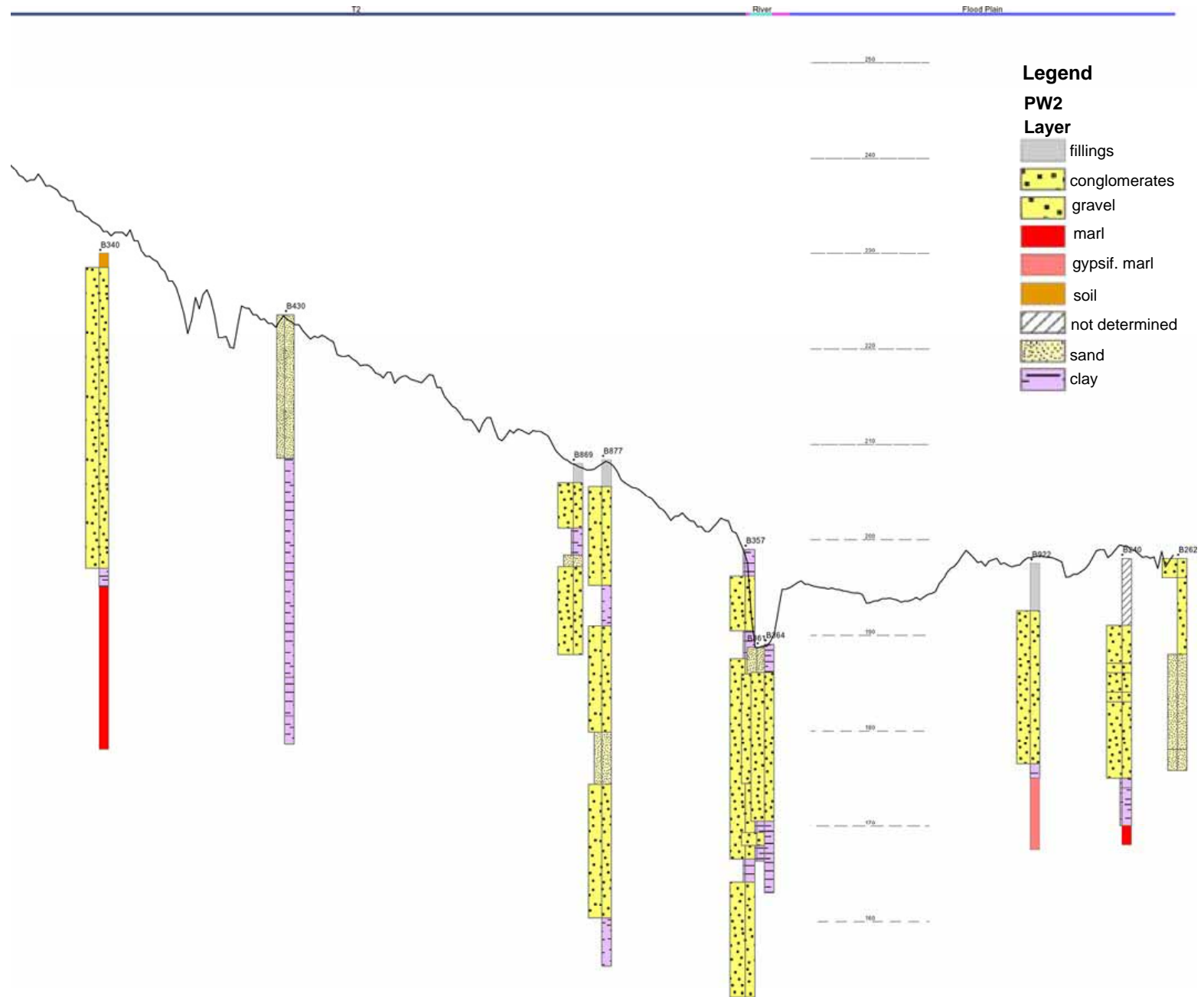
Geo-resources and geo-hazards mapping for a sustainable development in the surrounding of Zaragoza (Spain)

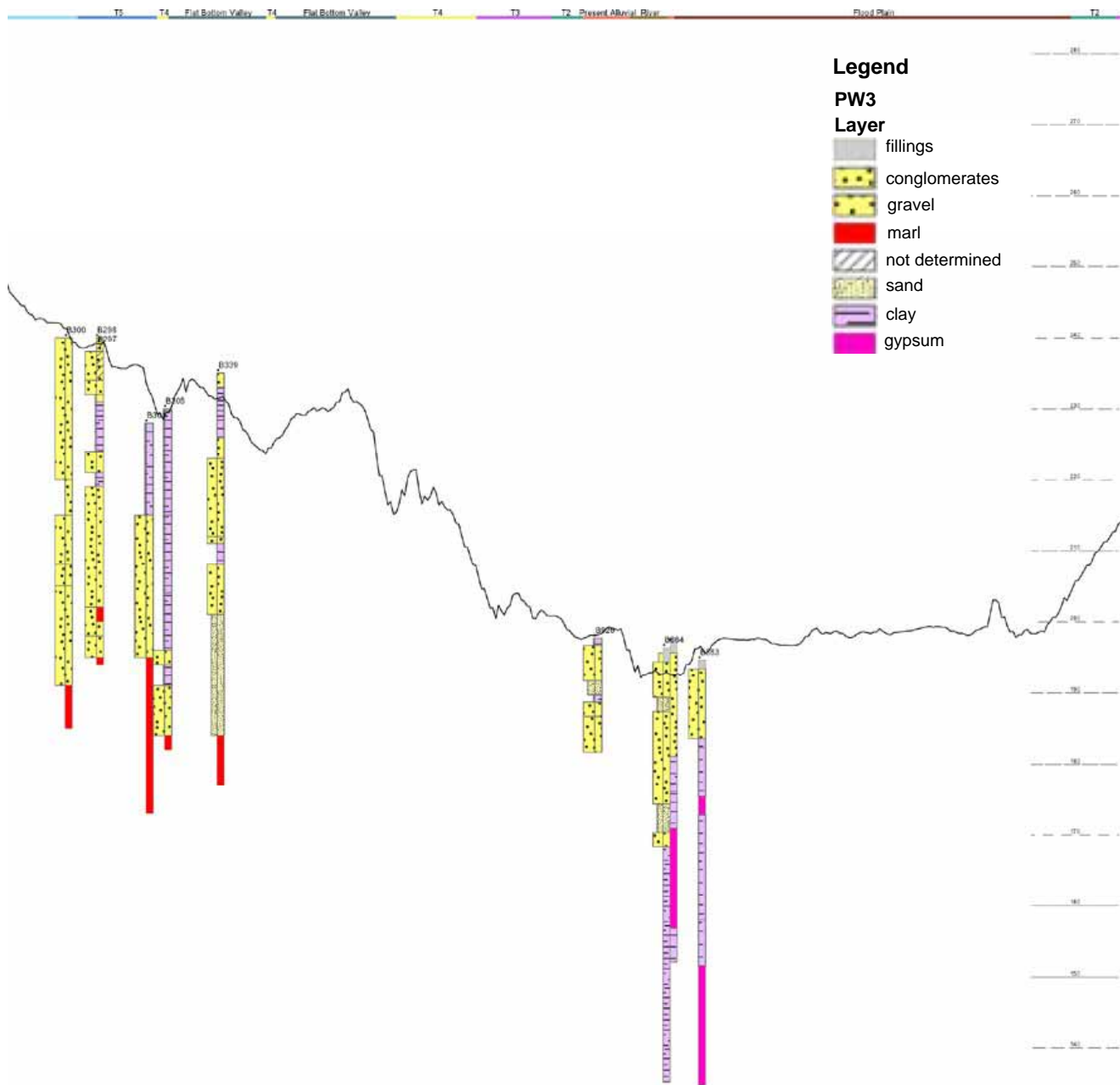


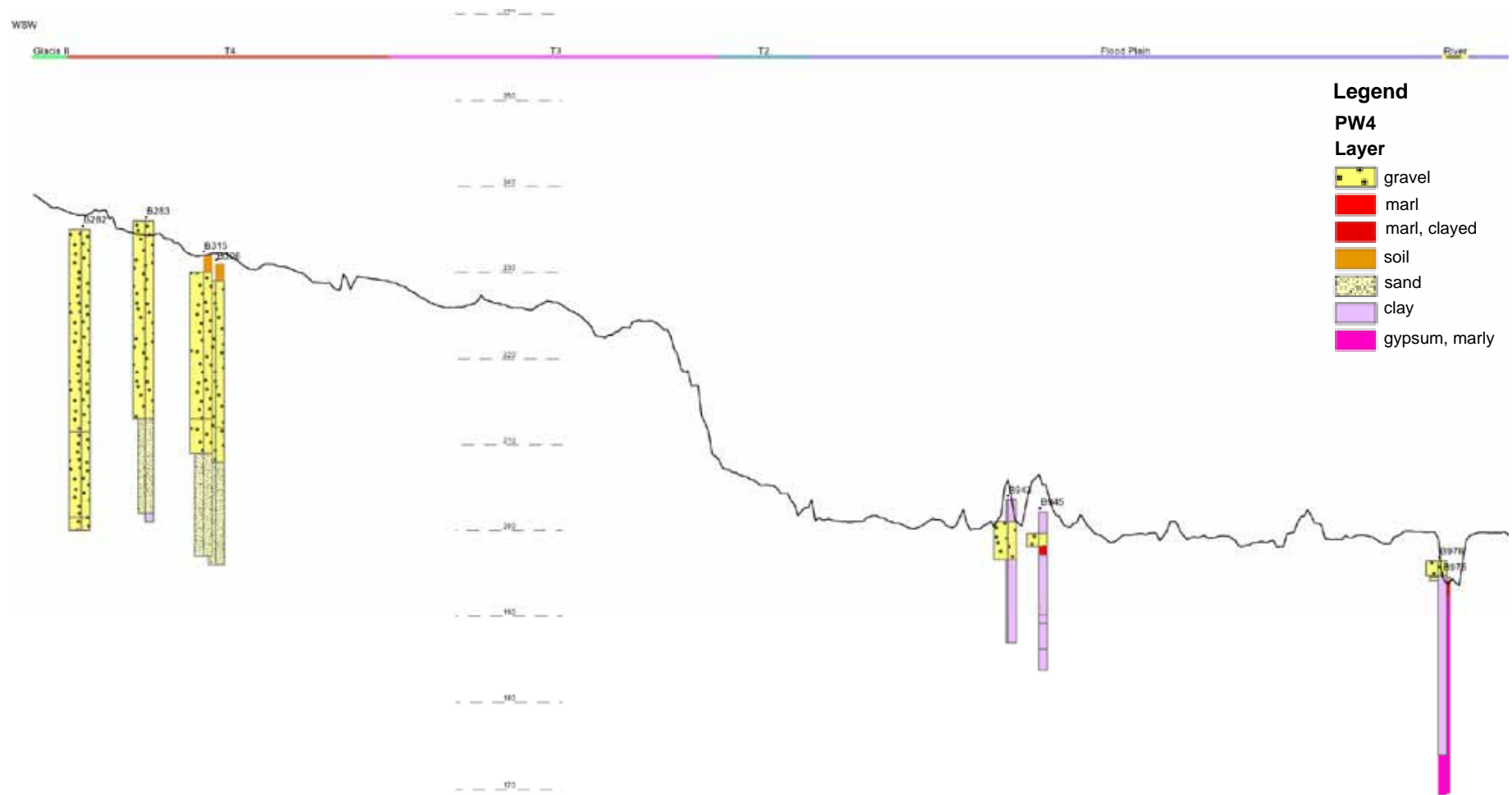


Geo-resources and geo-hazards mapping for a sustainable development in the surrounding of Zaragoza (Spain)

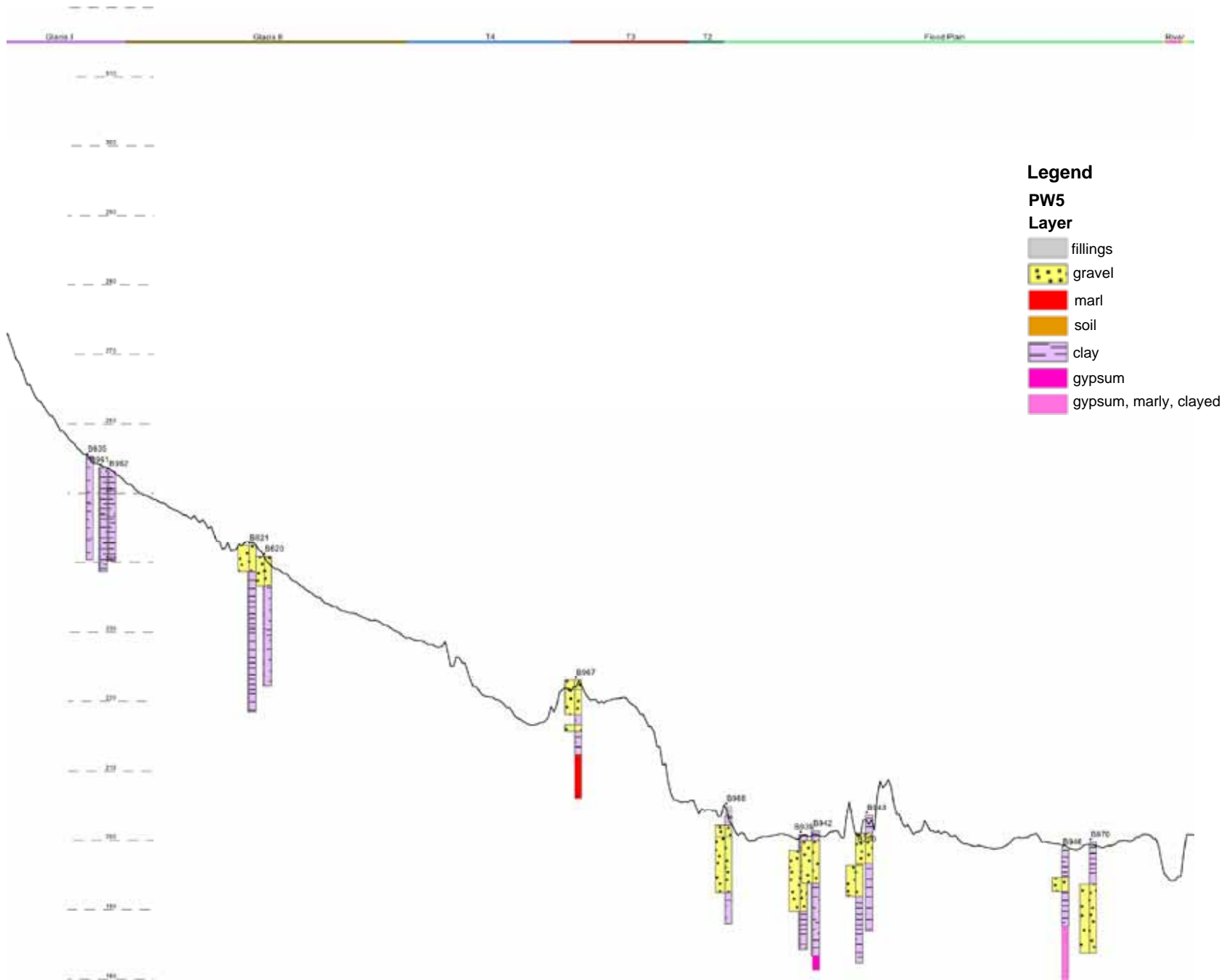


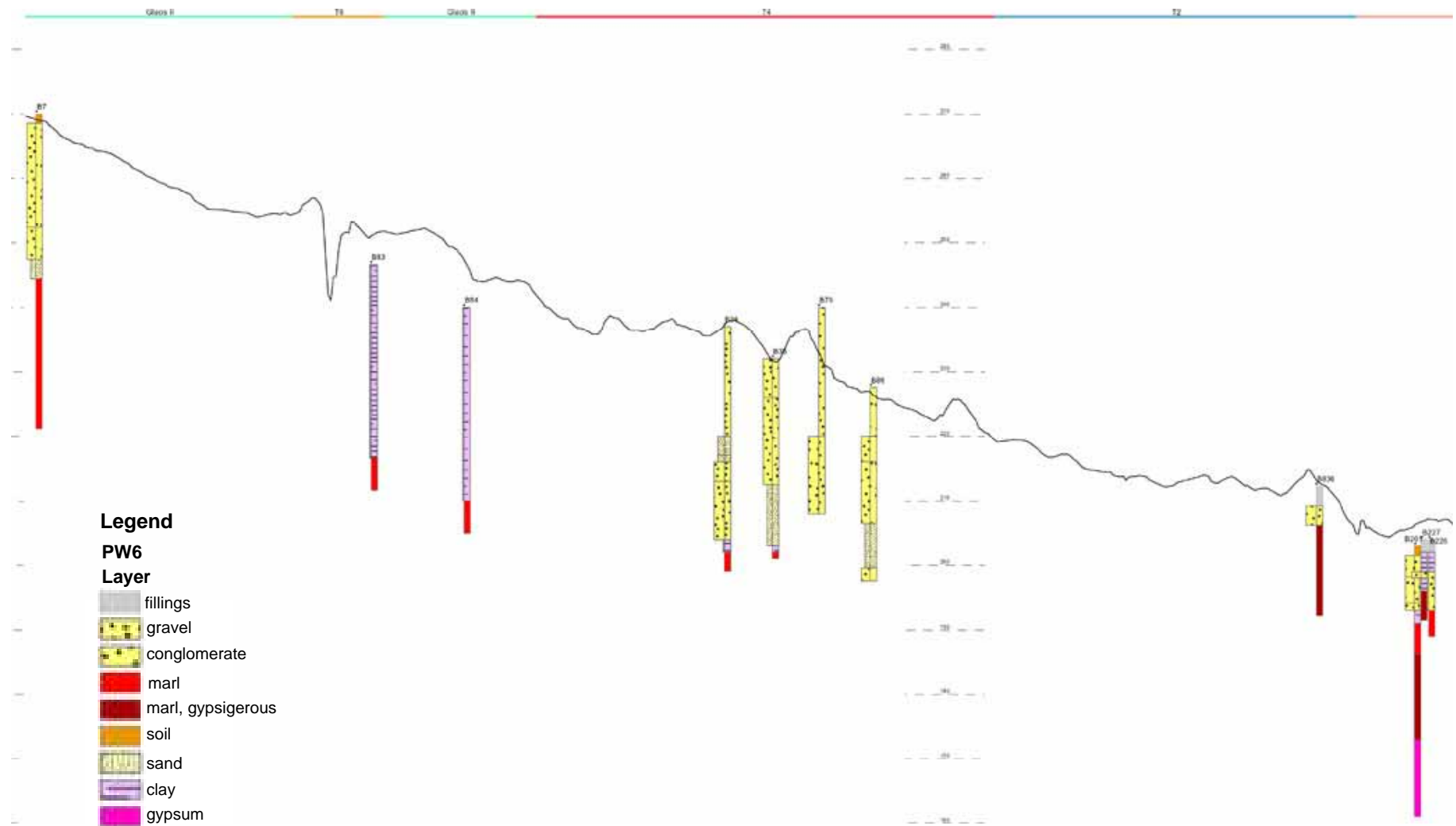






Geo-resources and geo-hazards mapping for a sustainable development in the surrounding of Zaragoza (Spain)

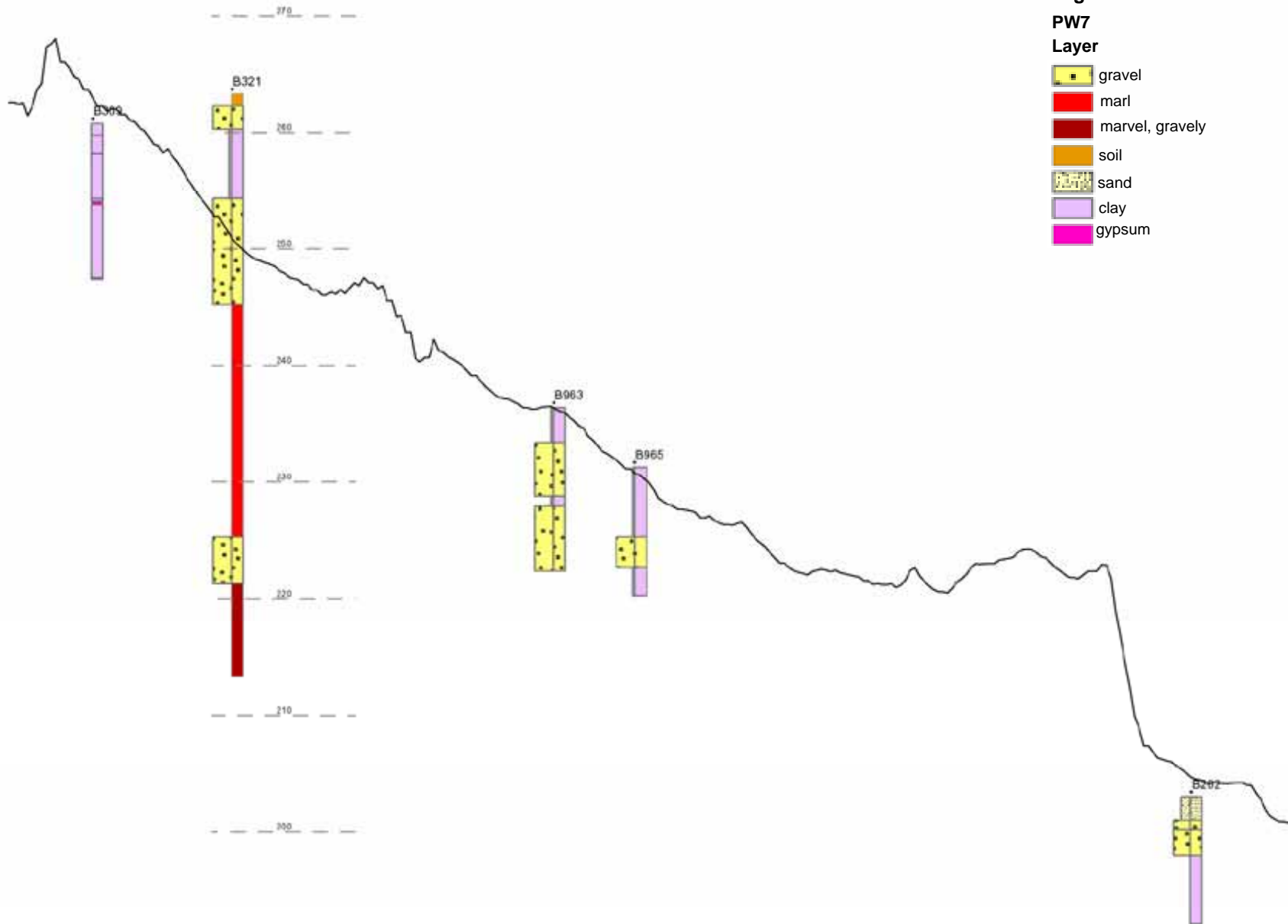




Geo-resources and geo-hazards mapping for a sustainable development in the surrounding of Zaragoza (Spain)

SSW

Actual Glacis IV Glacis I Glacis II T4 T3 T2



Legend

PW7

Layer

-  gravel
-  marl
-  marl, gravely
-  soil
-  sand
-  clay
-  gypsum

