

Supplementary Material -.Polymer-derived ceramic aerogels to immobilize sulfur for Li-S batteries.

Andrea Zambotti¹, Fangmu Qu^{2,*}, Giacomo Costa¹, Magdalena Graczyk-Zajac^{2,3}, Gian Domenico Sorarù^{1,4}

¹Department of Industrial Engineering, Glass & Ceramics Laboratory, University of Trento, Via Sommarive 9, 38123 Trento, Italy

²Institute of Materials Science, Darmstadt University of Technology, Otto-Berndt-Str. 3, 64287 Darmstadt, Germany

³EnBW Energie Baden-Württemberg AG Durlacher Allee 93 76131 Karlsruhe, Germany

⁴Natl Res Council Italy ICMATE CNR, Inst Condensed Matter Chem & Technol Energy, Via Marini 6, I-16149 Genoa, Italy

*Corresponding author: fangmu.qu@stud.tu-darmstadt.de

Figure S1 reports the XRD patterns of sulfur-containing ceramic scaffolds. All diffraction peaks correspond to the orthorhombic symmetry of the S₈ sulfur phase (COD code: 9011363), confirming that crystalline sulfur is present within the porous supports.

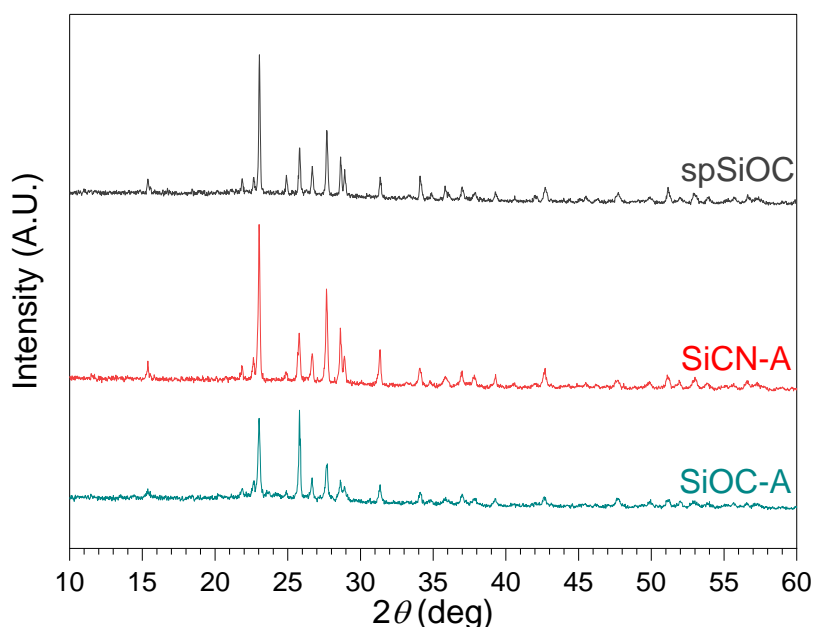


Figure S 1: X-ray diffraction patterns of ceramic scaffolds loaded with sulfur.