


**RAPID COMMUNICATION**

# Novel amino-Li resin for water-based solid-phase peptide synthesis

Christina Uth<sup>1</sup> | Simon Englert<sup>1</sup> | Olga Avrutina<sup>2</sup> | Harald Kolmar<sup>2</sup>  | Sascha Knauer<sup>1</sup>

<sup>1</sup>Sulfotools GmbH, Rüsselsheim am Main, Germany

<sup>2</sup>Clemens-Schöpf Institute for Organic Chemistry and Biochemistry, Technical University of Darmstadt, Darmstadt, Germany

**Correspondence**

Sascha Knauer, Sulfotools GmbH, Bahnhofplatz 1, Bldg. C14, 65428 Rüsselsheim am Main, Germany. Email: [knauer@sulfotools.com](mailto:knauer@sulfotools.com)

Harald Kolmar, Clemens-Schöpf Institute for Organic Chemistry and Biochemistry, Technical University of Darmstadt, Darmstadt, Germany. Email: [Kolmar@Biochemie-TUD.de](mailto:Kolmar@Biochemie-TUD.de)

We report the first application of a novel amino-Li resin to water-based solid-phase peptide synthesis (SPPS) applying the Smoc-protecting group approach. We demonstrated that it is a suitable support for the sustainable water-based alternative to a classical SPPS approach. The resin possesses good swelling properties in aqueous milieu, provides significant coupling sites, and may be applicable to the synthesis of difficult sequences and aggregation-prone peptides.

**KEYWORDS**

ASPPS, Smoc strategy, solid support, sustainable peptide synthesis, water-based peptide synthesis

## 1 | APPLICATION

In recent years, there has been a growing interest in synthetic peptides. Indeed, they can be endowed with a plethora of different functionalities and, therefore, are broadly applied in many fields—as pharma- and cosmeceuticals, food additives, health and life-style products, just to name a few. Considering only the pharmaceutical industry, as of 2020, about 100 peptide drugs are already on the market, about 170 are in clinical trials, and more than 200 in preclinical development.<sup>1,2</sup> Despite their tremendous commercial success, current peptide production faces the problem of sustainability<sup>3–5</sup>; as to date, peptide synthesis is still associated with the usage of large amounts of highly hazardous reagents<sup>3</sup> and solvents,<sup>6</sup> and only little focus lays on green chemistry and engineering.<sup>7</sup> Indeed, current peptide chemistry is one of the most consumptive chemical processes, far from being environmentally friendly, and a number of approaches has been to date reported to improve this situation.<sup>8–10</sup>

Though the first synthetic peptides have been successfully produced in solution, classical solution peptide synthesis (CSPS)<sup>11,12</sup>

requires very careful manipulation of protecting groups and sophisticated, often multistep workup and isolation procedures.<sup>13</sup> Therefore, CSPS is currently mostly considered for the synthesis of rather short peptides.<sup>14</sup>

The field of solid-phase peptide synthesis (SPPS) was pioneered by R.B. Merrifield; his technology allowed to significantly simplify the assembly of peptide sequences as a growing peptide chain was covalently linked to a special polymeric support and as a consequence all nonreacted entities, for example, reagents and solvents, were easily removed from the reaction upon washing.<sup>15,16</sup> To date, a vast number of challenging peptides has been synthesized using SPPS approach. However, even today, more than 60 years after Merrifield's seminal papers, peptide production still faces certain problems, with sustainability issues being the most challenging ones. Indeed, the most common reagents in SPPS are *N,N*-dimethylformamide (DMF), *N*-methyl-2-pyrrolidone (NMP) and—in lower amounts—dichloromethane, diethyl ether and tert-butyl methyl ether. They represent the biggest portion of wastes generated by chemical synthesis of peptides; therefore, the use of “green” solvents is definitely an asset. To overcome these environmental issues, many researchers proposed alternative ways, among them liquid-phase peptide synthesis (LPPS)

Dedicated to the memory of Michael Przybylski.

This is an open access article under the terms of the [Creative Commons Attribution](https://creativecommons.org/licenses/by/4.0/) License, which permits use, distribution and reproduction in any medium, provided the original work is properly cited.

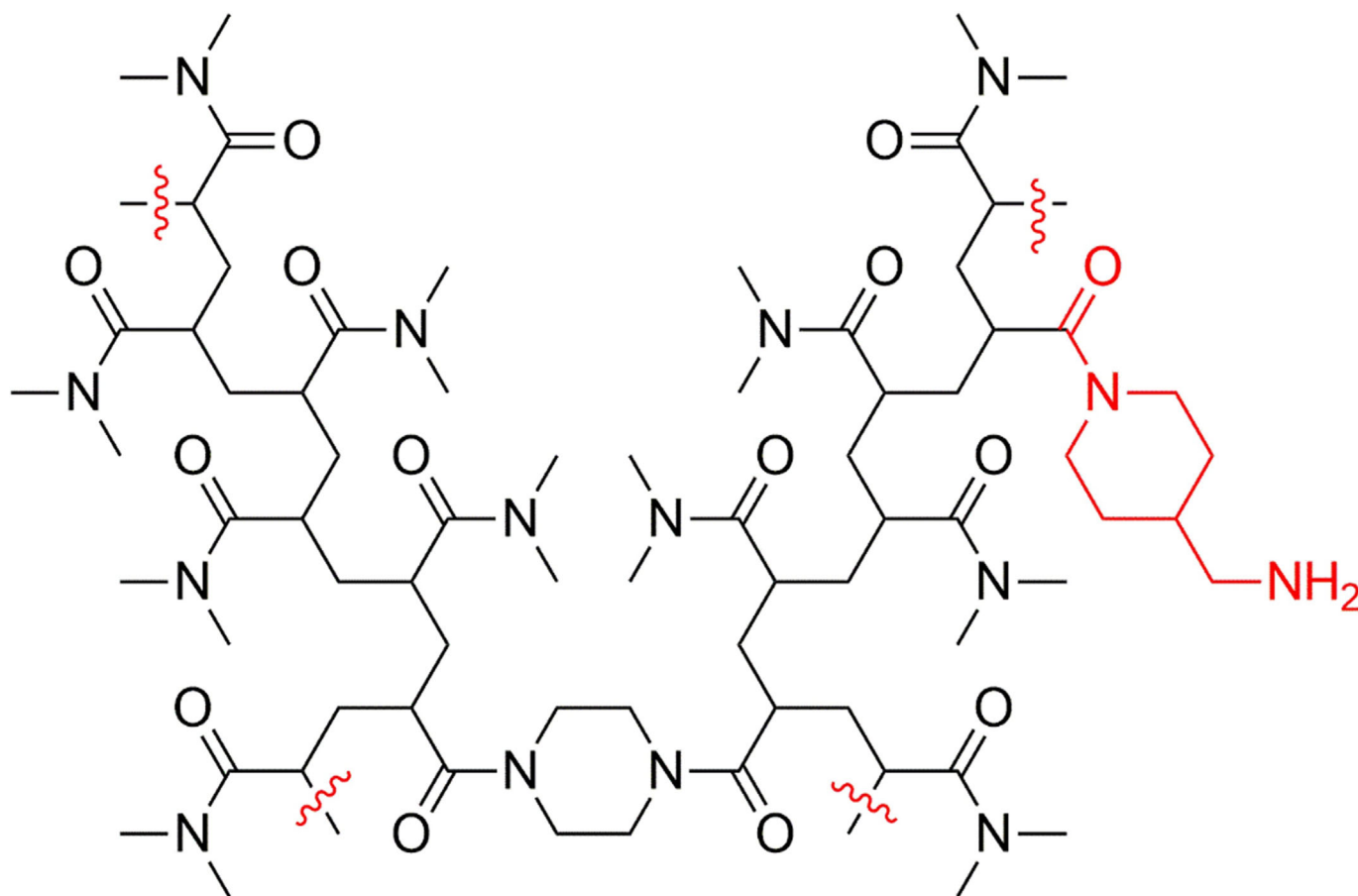
© 2023 The Authors. *Journal of Peptide Science* published by European Peptide Society and John Wiley & Sons Ltd.

that combines the advantages of SPPS and CSPS,<sup>17</sup> as well as solution-phase and SPPS in water, albeit with little success regarding yields and product purity.<sup>18,19</sup> In our earlier paper, we have described a sulfonated version of an Fmoc protecting group, 2,7-disulfo-9-fluorenylmethoxycarbonyl (Smoc), that allowed SPPS under aqueous conditions as well as efficient postsynthetic purification of the peptides.<sup>20</sup> Thus, we have established a concept for efficient aqueous solid-phase peptide synthesis (ASPPS) and optimized it in view of coupling efficiency and *N*-terminal deprotection conditions. However, the majority of current solid supports and linker systems are not suitable for SPPS under aqueous conditions. It can be expected that effectiveness of peptide assembly in water is strongly affected by the solid support that anchors the growing peptide chain, as in the case of peptide synthesis in organic solvents.<sup>21</sup> Briefly, the research field, dealing with the issue of making polymeric supports “greener”, is still rather small. Thus, it is focused on resin recycling—mostly of a 2-chlorotrityl-based support<sup>22,23</sup> and on the development of polymeric supports based on renewable sources, as for example, the poly- $\epsilon$ -lysine-based SpheriTide resin.<sup>24</sup> However, according to the literature, this resin has only limited compatibility with green solvents<sup>25</sup> and the focus is still on the “classic” polyethylene glycol-based resins.

To be applied to SPPS in general, but in particular also for water-based peptide synthesis, the resin must match certain requirements. Thus, a linker must be permanently bound to the polymeric support,

which has to assure anchoring of a growing peptide chain through the whole process of peptide assembly, and all addressable groups must be located outside the resin beads.<sup>26</sup> Moreover, solid supports for ASPPS must be compatible with water and efficiently swell in aqueous media. Therefore, the commonly used divinylbenzene–polystyrene polymers with their poor swelling capacity in water are not suitable for this synthetic approach. Good loading capacity, in an ideal case, more than 0.5 mmol/g, is also desirable. In addition, it must possess only minor interchain interactions and be mechanically stable. To date, from the set of available supports,<sup>26–31</sup> the PEG-based coreless ChemMatrix resin<sup>32,33</sup> was found to be the most suitable for aqueous SPPS.<sup>20</sup> However, this support shares the common drawbacks of its class, namely, low loading capacity, unpredictable swelling, and acid lability. Recently, as an alternative, a second generation of aminopolyacrylamide resin (amino-Li-resin,<sup>33,34</sup> Figure 1) was developed that has proven applicability for SPPS<sup>33</sup> in view of its excellent swelling in most polar organic solvents, including the green solvents most commonly used in SPPS, water, and even in aqueous buffers.

Prepared by *N,N,N',N'*-tetramethylethylenediamine (TEMED)-initiated polymerization of *N,N*-dimethylacrylamide with *N,N'*-bis(acryloyl)piperazine as cross-linker, this polymer has an addressable primary amine at its functionalizing 1-[1-(*N*-acrylyl)piperidin-4-yl]methanamine moiety (shown in red at Figure 1). Obviously, this aliphatic amine is more reactive compared with benzylamine or



**FIGURE 1** Structure of Li resin. Addressable site is shown in red.

benzhydrylamine usually applied in PS-based resins, which is of particular importance in view of further incorporation of RAM linker by amidation. In addition, the formed amide possesses enhanced acid stability, compared with the PS-based counterparts, which is also important during chain assembly and global cleavage.<sup>33</sup>

This resin was reported to display a high loading capacity (0.5 mmol/g) and good chemical stability towards acidic and basic reagents. Using this support, a set of peptides was successfully assembled according to Fmoc-SPPS and applying classic DMF-based solvent system, among them enkephalin- and RGD-derived pentapeptides, a decapeptide *H*-VGAAIDYING-NH<sub>2</sub>, and a decaalanine-based tridecapeptide bearing several lysines for solubility.<sup>33</sup> These findings prompted us to investigate the usability of amino-Li-resin as a solid support for the Smoc-based aqueous SPPS (Smoc-ASPPS) approach. Herein, we report synthesis of selected reference peptides using Smoc-ASPPS on amino-Li resin and show that it is a suitable support for water-based green variant of solid-phase peptide production.

Applicability of amino-Li resin to aqueous peptide synthesis was examined on four reference oligopeptide sequences: *H*-YGGFL-NH<sub>2</sub> (**1**), *H*-YIIFL-NH<sub>2</sub> (**2**), *H*-QRNA-NH<sub>2</sub> (**3**), and *H*-RGD-NH<sub>2</sub> (**4**) (Scheme 1). The choice of these peptides was based on the fact that they are often used as test sequences to evaluate the applicability of synthesis approaches and to water-based synthesis in particular.<sup>35</sup> Peptides **1** and **2** are variants of a Leu-Enkephalin, an endogenous opioid peptide neurotransmitter, found naturally in the brain of many animals, including humans. Peptides **3** and **4** are two arginine-bearing peptides, an arginylglycylaspartic acid **4** (RGD)—the most common peptide motif responsible for cell adhesion to the extracellular matrix, found in species ranging from *Drosophila* to humans,<sup>36,37</sup> and a glutaminylarginylasparaginyllalanine **3** was chosen as a model peptide to demonstrate the ASPPS without side-chain protecting groups—an additional step to greener peptide synthesis in view of atom economy.

The synthesis started with modification of Li-resin with Fmoc-Rink amide linker (Figure 2) to make the support applicable to peptide synthesis. Done in DMF under HBTU/DIEA activation followed by Fmoc cleavage with 20% piperidine in DMF, it is one of two nongreen steps upon assembly of peptides. The second one is TFA cleavage of the fully assembled peptide from the support.

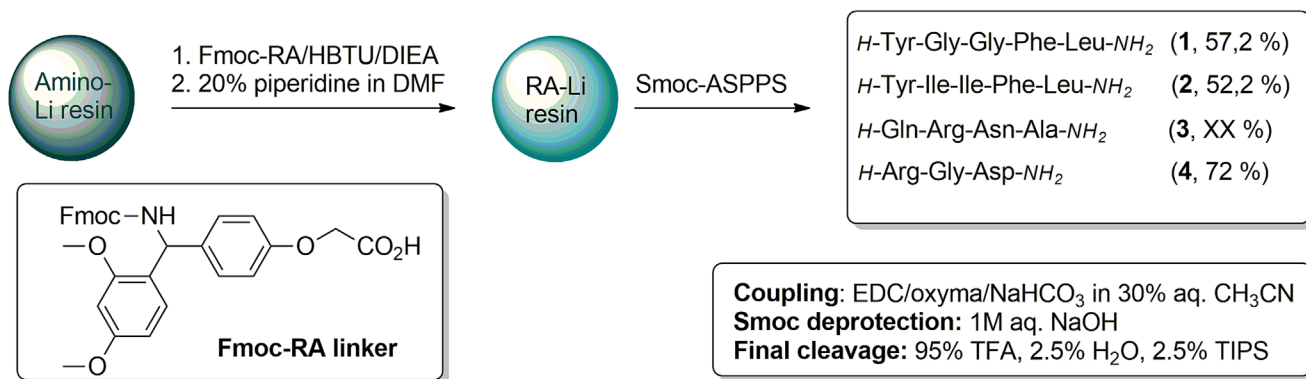
Notably, dried Rink-Amide Li (RA-Li) resin demonstrated good swelling behavior in water (Figure 2).

Then, the Smoc-ASPPS was conducted as described in Section 2. Briefly, N<sub>α</sub>-Smoc protected amino acids were coupled under EDC/oxyma activation in the presence of aqueous sodium bicarbonate at ambient temperature. The C-terminal amino acids as well as the second Ile in the sequence of Leu-Enkephalin peptide were attached by double coupling to increase coupling efficacy, while all other amino acids were introduced by single coupling. It is important to mention that N<sub>α</sub>-Smoc building blocks D, N, Q, R, Y possessed unprotected side chains.<sup>20</sup>

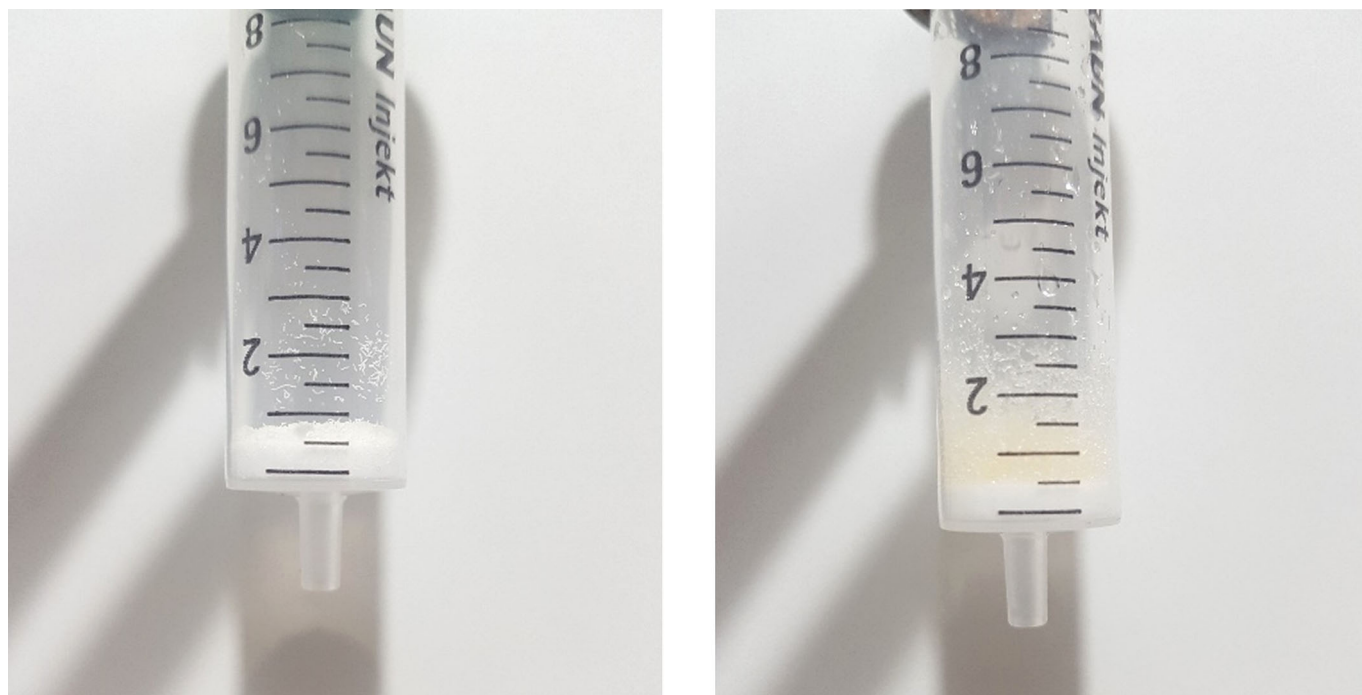
High-performance liquid chromatography (HPLC) traces of crude peptides, shown at Figure 3, clearly demonstrate that all constructs were assembled in sufficient purity and good yield (see also Section 2). Electrospray ionization mass spectrometry (ESI-MS) analysis revealed that the observed *m/z* signals corresponded to the calculated ones.

For demonstration of the feasibility of ASPPS on Li-resin, YIIFL was used as model peptide, as it has been shown to be synthesizable on the Li-resin in organic media by Albericio *et al* and contains the difficult sequence Ile-Ile. To circumvent loss in yield and purity, ASPPS of the second Ile was performed as double coupling step. However, as the synthesis protocols were not optimized, there is still improvement with respect to yield and purity possible. Moreover, we have successfully demonstrated the use of several amino acids (Asn, Gln, Tyr, Trp) without side-chain protecting groups (see synthesis of QRNA) improving the atom economy of peptide synthesis.

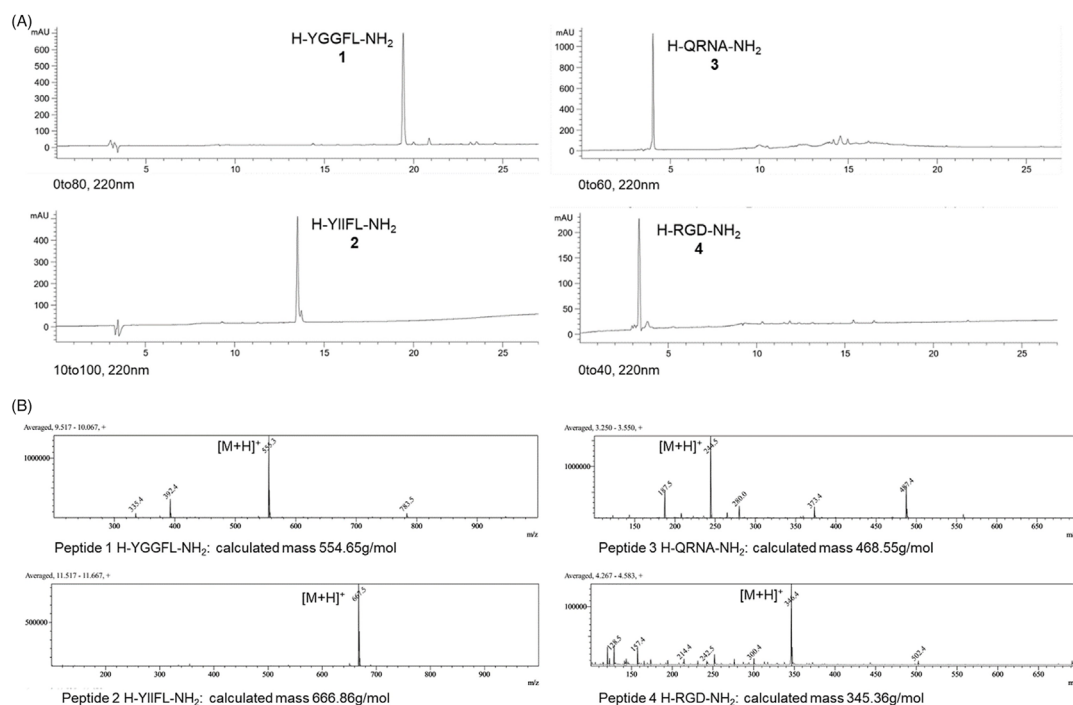
To summarize, we demonstrated that the novel amino-Li resin is a suitable support for the sustainable water-based alternative to a classical SPPS approach. It possesses good swelling properties in aqueous milieu, provides significant coupling sites and may be applicable to the synthesis of difficult sequences and aggregation-prone peptides. We have extensive experience with Smoc-based SPPS using ChemMatrix resin. Being a polymer based on polyethene cross-linked with PEG supports and therefore polyacrylamide or polystyrene backbones, this amphiphilic resin is an excellent support for ASPPS since it swells extensively in a wide range of solvents, among them water, tetrahydrofuran (THF), methanol, dichloromethane (DCM) and DMF.



**SCHEME 1** General scheme for the aqueous Smoc-based solid-phase peptide synthesis (SPPS) (Smoc-ASPPS) on amino-Li resin. Yields are given as well as the structure of Fmoc-rink amide linker and reaction conditions. TFA: trifluoroacetic acid. TIPS: triisopropyl silane.



**FIGURE 2** Swelling of RA-Li resin in water. Left: dry resin. Right: resin swollen in water for 30 min.



**FIGURE 3** (A) HPLC traces of crude peptides 1-4 at 220 nm. Peptide 1: gradient 0% to 60% CH<sub>3</sub>CN, purity 91%. Peptide 2: gradient 10% to 100% CH<sub>3</sub>CN, purity 86%. Peptide 3 at 220 nm, gradient 0% to 60% CH<sub>3</sub>CN, purity 48%. Peptide 4: gradient 0% to 40% CH<sub>3</sub>CN, purity 83%. (B) ESI-MS spectra of peptides 1-4.

However, in our hands, its major drawback was PEG leakage upon TFA cleavage. In addition, ChemMatrix resin has an extremely large swelling volume, which becomes a problem upon industrial application. In this respect, Amino-Li resin displays significantly better

performance. The next step would be application of this resin to the synthesis of long peptides, especially those endowed with so called “difficult sequences”, requiring on-resin cyclization or postsynthetic oxidative folding.

## 2 | EXPERIMENTAL

### 2.1 | Modification of the amino-Li resin for peptide synthesis

To use the amino-Li-resin (loading 0.5 mmol/g) for water-based peptide synthesis, it was modified with an Fmoc-Rink amide linker. To that end, the resin was swollen in DMF for 1 h. Coupling of the Fmoc-Rink amide linker was performed using 3 eq. linker, 2.9 eq. HBTU, and 6 eq. DIEA in DMF for 1 h at ambient temperature. After washing three times with DMF, the Fmoc group was removed using 20% piperidine in DMF for 5 and 10 min. The resin was washed with DMF and water and was dried in vacuum.

### 2.2 | General procedure for aqueous peptides synthesis

The resin was swollen in water or water/acetonitrile mixture for 1 h at ambient temperature in a syringe equipped with a frit. Loading of the first Smoc building block was performed as double coupling for 2 × 25 min in 30% aq. CH<sub>3</sub>CN applying 4 eq. Smoc-amino acid, 4.5 eq. oxyma, 5.5 eq. EDC, and 3.5 eq. NaHCO<sub>3</sub>. Reaction mixture was kept on a shaker with little agitation without stirring; therefore, no significant fragility of the resin was observed; however, it cannot be completely excluded. After washing three times with water, capping with acetic acid was done. The Smoc-group was removed with 1 M NaOH for 1 × 5 min, 1 × 10 min and washed three times with water. If not otherwise mentioned, coupling of the following amino acids was performed as single coupling for 45 min. After completion of the synthesis, the resin was washed with aq. NaCl to remove ionically bound Smoc derivatives. After washing with water, the peptide was cleaved using 95% TFA, 2.5% water, and 2.5% TIPS for 1 h. If not otherwise mentioned, the cleavage mixture was poured into ice-cold diethyl ether to precipitate the peptide. The precipitated peptide was dissolved in water/acetonitrile, freeze-dried, and analyzed.

### 2.3 | Synthesis of *H*-YGGFL-NH<sub>2</sub> (1)

The RA-Li resin (loading 0.5 mmol/g) was swollen in water for 1 h at ambient temperature. The first amino acid was loaded as double coupling using 3 eq. Smoc-aa, 3.5 eq. oxyma, 4 eq. EDC, and 3 eq. NaHCO<sub>3</sub> for 2 × 25 min in water. Coupling was performed as single coupling using 3 eq. Smoc-aa, 3.5 eq. oxyma, 4 eq. EDC, and 3 eq. NaHCO<sub>3</sub> for 45 min in water.

Removal of the Smoc-group was performed using 1 M NaOH for 1 × 5 min and 1 × 10 min. All Smoc-aa were used without side-chain protecting groups.

Washing steps were done with water, and cleavage was performed as described above to yield 15.85 mg of Leu-Enkephalin **1** as white powder (yield 57.2%).

ESI-MS: calculated mass for C<sub>28</sub>H<sub>38</sub>N<sub>6</sub>O<sub>6</sub>: 554.65 g/mol; measured *m/z* 555.3 [M+H]<sup>+</sup>.

### 2.4 | Synthesis of *H*-YIIFL-NH<sub>2</sub> (2)

The Rink-amide modified Li-resin (RA-Li resin, loading 0.5 mmol/g) was swollen in water for 1 h at ambient temperature. The first amino acid was loaded as double coupling using 4 eq. Smoc-aa, 4.5 eq. oxyma, 5.5 eq. EDC, and 3.5 eq. NaHCO<sub>3</sub> for 2 × 25 min in 30% aq. CH<sub>3</sub>CN. Capping was performed with 4 eq. acetic acid, 4.5 eq. oxyma, 5.5 eq. EDC, and 7.5 eq. NaHCO<sub>3</sub> for 30 min.

Coupling was done as single coupling except for the second Ile, for which a double coupling was used. Single coupling was performed using 4 eq. Smoc-aa, 4.5 eq. oxyma, 5.5 eq. EDC, and 3.5 eq. NaHCO<sub>3</sub> for 45 min in 30% aq. CH<sub>3</sub>CN.

Removal of the Smoc-group was performed using 1 M NaOH for 1 × 5 min and 1 × 10 min.

Washing steps were done with water, and cleavage was performed as described above.

As the peptide sequence is too hydrophobic and does not precipitate in ether, the cleavage cocktail was poured in water and lyophilized to yield 22.4 mg of peptide **2** as white powder (yield 70%).

ESI-MS: calculated molecular mass for C<sub>36</sub>H<sub>54</sub>N<sub>6</sub>O<sub>6</sub>: 666.86 g/mol; measured *m/z* 667.5 [M+H]<sup>+</sup>.

### 2.5 | Synthesis *H*-QRNA-NH<sub>2</sub> (3)

The RA-Li resin (loading 0.5 mmol/g) was swollen in water for 1 h at ambient temperature. The first amino acid was loaded as double coupling using 4 eq. Smoc-aa, 4.5 eq. oxyma, 5.5 eq. EDC, and 3.5 eq. NaHCO<sub>3</sub> for 2 × 25 min in 30% aq. CH<sub>3</sub>CN. Coupling was performed with the same equivalents as single coupling for 45 min.

Removal of the Smoc-group was performed using 1 M NaOH for 1 × 5 min and 1 × 10 min. All Smoc-aa were used without side-chain protecting groups.

Washing steps were done with water, and cleavage was performed as described above to yield 5 mg of **3** as white powder (yield 51.4%).

ESI-MS: calculated molecular mass for C<sub>18</sub>H<sub>34</sub>N<sub>10</sub>O<sub>6</sub>: 486.5 g/mol; measured *m/z* 244.5 [M+2H]<sup>2+</sup>, 487.4 [M+H]<sup>+</sup>.

### 2.6 | Synthesis of *H*-RGD-NH<sub>2</sub> (4)

The RA-Li resin (loading 0.5 mmol/g) was swollen in water for 1 h at ambient temperature. The first amino acid was loaded as double coupling using 3 eq. Smoc-aa, 3.5 eq. oxyma, 4 eq. EDC, and 3 eq. NaHCO<sub>3</sub> for 2 × 25 min in water. Coupling was performed as single coupling using 3 eq. Smoc-aa, 3.5 eq. oxyma, 4 eq. EDC, and 3 eq. NaHCO<sub>3</sub> for 45 min in water.

Removal of the Smoc-group was performed using 1 M NaOH for 1 × 5 min and 1 × 10 min. All Smoc-aa were used without side-chain protecting groups.

Washing steps were done with water, and cleavage was performed as described above to yield 12.9 mg of **4** as white powder (yield 72%).

ESI-MS: calculated molecular mass for C<sub>12</sub>H<sub>23</sub>N<sub>7</sub>O<sub>5</sub>: 345.36 g/mol; measured *m/z* 346.4 [M+H]<sup>+</sup>.

## ACKNOWLEDGEMENTS

The authors thank Iris Biotech GmbH (Marktredwitz, Germany) for the provided amino-Li resin. Open Access funding enabled and organized by Projekt DEAL.

## CONFLICT OF INTEREST STATEMENT

The authors have declared no conflict of interest.

## ORCID

Harald Kolmar  <https://orcid.org/0000-0002-8210-1993>

## REFERENCES

- Henninot A, Collins JC, Nuss JM. The current state of peptide drug discovery: back to the future? *J Med Chem*. 2018;61(4):1382-1414. doi:10.1021/acs.jmedchem.7b00318
- D'Aloisio V, Dognini P, Hutcheon GA, Coxon CR. PepTherDia: database and structural composition analysis of approved peptide therapeutics and diagnostics. *Drug Discov Today*. 2021;26(6):1409-1419. doi:10.1016/j.drudis.2021.02.019
- Albericio F. Orthogonal protecting groups for N $\alpha$ -amino and C-terminal carboxyl functions in solid-phase peptide synthesis. *Pept Sci*. 2000;55(2):123-139. doi:10.1002/1097-0282(2000)55:2%3C123::AID-BIP30%3E3.0.CO;2-F
- El-Faham A, Albericio F. Peptide coupling reagents, more than a letter soup. *Chem Rev*. 2011;111(11):6557-6602. doi:10.1021/cr100048w
- Ferrazzano L, Catani M, Cavazzini A, et al. Sustainability in peptide chemistry: current synthesis and purification technologies and future challenges. *Green Chem*. 2022;24(3):975-1020. doi:10.1039/D1GC04387K
- Goodman M, Felix AM, Moroder L, Toniolo C. *Synthesis of peptides and peptidomimetics*. American Chemical Society; 2003. doi:10.1055/b-003-111718
- Lawrenson SB, Arav R, North M. The greening of peptide synthesis. *Green Chem*. 2017;19(7):1685-1691. doi:10.1039/C7GC00247E
- Mándity IM, Olasz B, Ötvös SB, Fülöp F. Continuous-flow solid-phase peptide synthesis: a revolutionary reduction of the amino acid excess. *ChemSusChem*. 2014;7(11):3172-3176. doi:10.1002/cssc.201402436
- Flögel O, Codée JDC, Seebach D, Seeberger PH. Microreactor synthesis of  $\beta$ -peptides. *Angew Chem Int Ed*. 2006;45(42):7000-7003. doi:10.1002/anie.200602167
- Simon MD, Heider PL, Adamo A, et al. Rapid flow-based peptide synthesis. *ChemBioChem*. 2014;15(5):713-720. doi:10.1002/cbic.201300796
- Lloyd-Williams P, Albericio F, Giralt E. *Chemical approaches to the synthesis of peptides and proteins*. Vol. 10. CRC Press; 1997.
- Eggen IF, Bakelaar FT, Petersen A, et al. A novel method for repetitive peptide synthesis in solution without isolation of intermediates. *J Pept Sci*. 2005;11(10):633-641. doi:10.1002/psc.670
- Anderson GW. New approaches to peptide synthesis. *Ann N Y Acad Sci*. 1960;88(3):676-688. doi:10.1111/j.1749-6632.1960.tb20062.x
- Verlander MS. Industrial applications of solid-phase peptide synthesis—a status report. *Int J Pept Res Ther*. 2007;13(1-2):75-82. doi:10.1007/s10989-006-9075-7
- Merrifield RB. Solid phase peptide synthesis. I. the synthesis of a tetrapeptide. *J Am Chem Soc*. 1963;85(14):2149-2154. doi:10.1021/ja00897a025
- Winkler DFH. Automated Solid-Phase Peptide Synthesis. In: Hussein WM, Skwarczynski M, Toth I, eds. *Peptide synthesis: methods and protocols*. Springer US; 2020:59-94.
- Sharma A, Kumar A, de la Torre BG, Albericio F. Liquid-phase peptide synthesis (LPPS): a third wave for the preparation of peptides. *Chem Rev*. 2022;122(16):13516-13546. doi:10.1021/acs.chemrev.2c00132
- Hojo K, Ichikawa H, Onishi M, Fukumori Y, Kawasaki K. Peptide synthesis 'in water' by a solution-phase method using water-dispersible nanoparticle Boc-amino acid. *J Pept Sci*. 2011;17(7):487-492. doi:10.1002/psc.1367
- Hojo K, Fujiwara S, Inai H, Manabe Y, Tsuda Y. Environmentally conscious in-water peptide synthesis using Boc strategy. *Int J Pept Res Ther*. 2022;28(2):51. doi:10.1007/s10989-021-10354-1
- Knauer S, Koch N, Uth C, Meusinger R, Avrutina O, Kolmar H. Sustainable peptide synthesis enabled by a transient protecting group. *Angew Chem Int Ed*. 2020;59(31):12984-12990. doi:10.1002/anie.202003676
- Alshanski I, Bentolila M, Gitlin-Domagalska A, et al. Enhancing the efficiency of the solid phase peptide synthesis (SPPS) process by high shear mixing. *Org Process Res Dev*. 2018;22(9):1318-1322. doi:10.1021/acs.oprd.8b00225
- García-Martín F, Bayó-Puxan N, Cruz LJ, Bohling JC, Albericio F. Chlorotriptyl chloride (CTC) resin as a reusable carboxyl protecting group. *QSAR Comb Sci*. 2007;26(10):1027-1035. doi:10.1002/qsar.200720015
- Harré MS, Nickisch K, Tilstam U. An efficient method for activation and recycling of trityl resins. *React Funct Polym*. 1999;41(1-3):111-114. doi:10.1016/S1381-5148(99)00039-5
- Lawrenson S, North M, Peigneguy F, Routledge A. Greener solvents for solid-phase synthesis. *Green Chem*. 2017;19(4):952-962. doi:10.1039/C6GC03147A
- Isidro-Llobet A, Kenworthy MN, Mukherjee S, et al. Sustainability challenges in peptide synthesis and purification: from R&D to production. *J Org Chem*. 2019;84(8):4615-4628. doi:10.1021/acs.joc.8b03001
- Kim H, Cho JK, Chung W-J, Lee Y-S. Core–Shell-type resins for solid-phase peptide synthesis: comparison with gel-type resins in solid-phase photolytic cleavage reaction. *Org Lett*. 2004;6(19):3273-3276. doi:10.1021/ol048815q
- Ramkisson S, Jad YE, Sharma A, de la Torre BG, Albericio F. OctaGel resin - a new PEG-PS-based solid support for solid-phase peptide synthesis. *Lett Org Chem*. 2019;16(12):935-940. doi:10.2174/1570178616666190913153605
- Kates SA, McGuinness BF, Blackburn C, et al. "High-load" polyethylene glycol-polystyrene (PEG-PS) graft supports for solid-phase synthesis. *Pept Sci*. 1998;47(5):365-380. doi:10.1002/(SICI)1097-0282(1998)47:5%3C365::AID-BIP4%3E3.0.CO;2-8
- Bayer E, Rapp W. Polystyrene-Immobilized PEG Chains. In: Harris JM, ed. *Poly (ethylene glycol) chemistry: biotechnical and biomedical applications*. Springer US; 1992:325-345.
- Kempe M, Barany G. CLEAR: a novel family of highly cross-linked polymeric supports for solid-phase peptide Synthesis<sub>1,2</sub>. *J Am Chem Soc*. 1996;118(30):7083-7093. doi:10.1021/ja954196s
- Sparrow JT, Knieb-Cordonier NG, Obeyesekere NU, McMurray JS. Large-pore polydimethylacrylamide resin for solid-phase peptide synthesis: applications in Fmoc chemistry. *Pept Res*. 1996;9(6):297-304.
- García-Martín F, Quintanar-Audelo M, García-Ramos Y, et al. ChemMatrix, a poly (ethylene glycol)-based support for the

- solid-phase synthesis of complex peptides. *J Comb Chem.* 2006;8(2): 213-220. doi:[10.1021/cc0600019](https://doi.org/10.1021/cc0600019)
33. Akintayo DC, de la Torre BG, Li Y, Albericio F. Amino-Li-resin—a fiber polyacrylamide resin for solid-phase peptide synthesis. *Polymers.* 2022;14(5):928. doi:[10.3390/polym14050928](https://doi.org/10.3390/polym14050928)
34. Akintayo DC, Manne SR, de la Torre BG, Li Y, Albericio F. A practical peptide synthesis workflow using amino-Li-resin. *Methods Protoc.* 2022;5(5):72. doi:[10.3390/mps5050072](https://doi.org/10.3390/mps5050072)
35. Jaradat DS, al Musaimi O, Albericio F. Advances in solid-phase peptide synthesis in aqueous media (ASPPS). *Green Chem.* 2022; 24(17):6360-6372. doi:[10.1039/D2GC02319A](https://doi.org/10.1039/D2GC02319A)
36. Davoodi Z, Shafiee F. Internalizing RGD, a great motif for targeted peptide and protein delivery: a review article. *Drug Deliv Transl Res.* 2022;12(10):2261-2274. doi:[10.1007/s13346-022-01116-7](https://doi.org/10.1007/s13346-022-01116-7)
37. Barczyk M, Carracedo S, Gullberg D. Integrins. *Cell Tissue Res.* 2010; 339(1):269-280. doi:[10.1007/s00441-009-0834-6](https://doi.org/10.1007/s00441-009-0834-6)

**How to cite this article:** Uth C, Englert S, Avrutina O, Kolmar H, Knauer S. Novel amino-Li resin for water-based solid-phase peptide synthesis. *J Pept Sci.* 2023;29(12):e3527. doi:[10.1002/psc.3527](https://doi.org/10.1002/psc.3527)