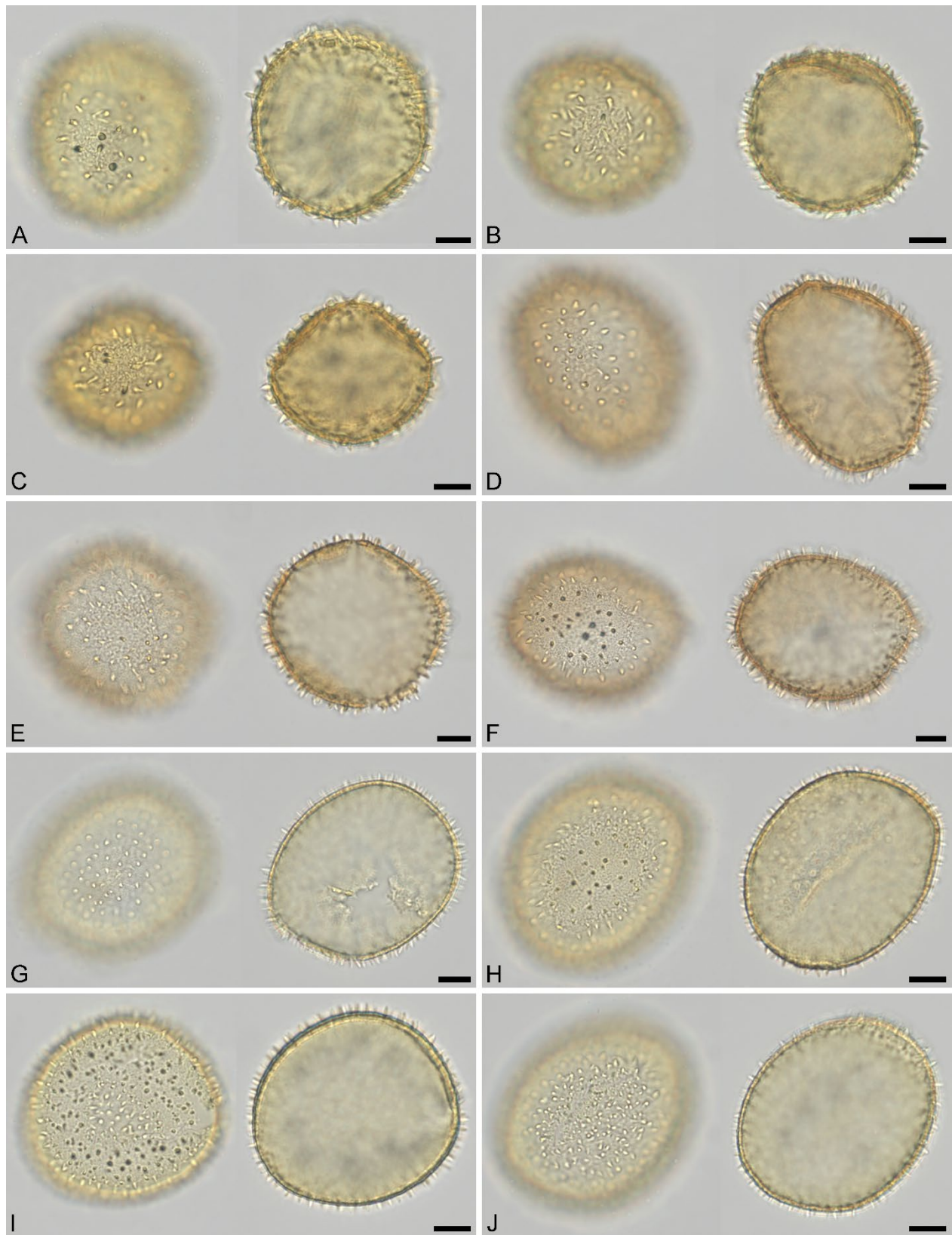


## **Supplementary material 03**

**Authors:** Silvia Ulrich, Manuel Vieira, Mario Coiro, Johannes M. Bouchal, Christian Geier, Bonnie F. Jacobs, Ellen D. Currano, Olaf K. Lenz, Volker Wilde, Reinhard Zetter, Friðgeir Grímsson

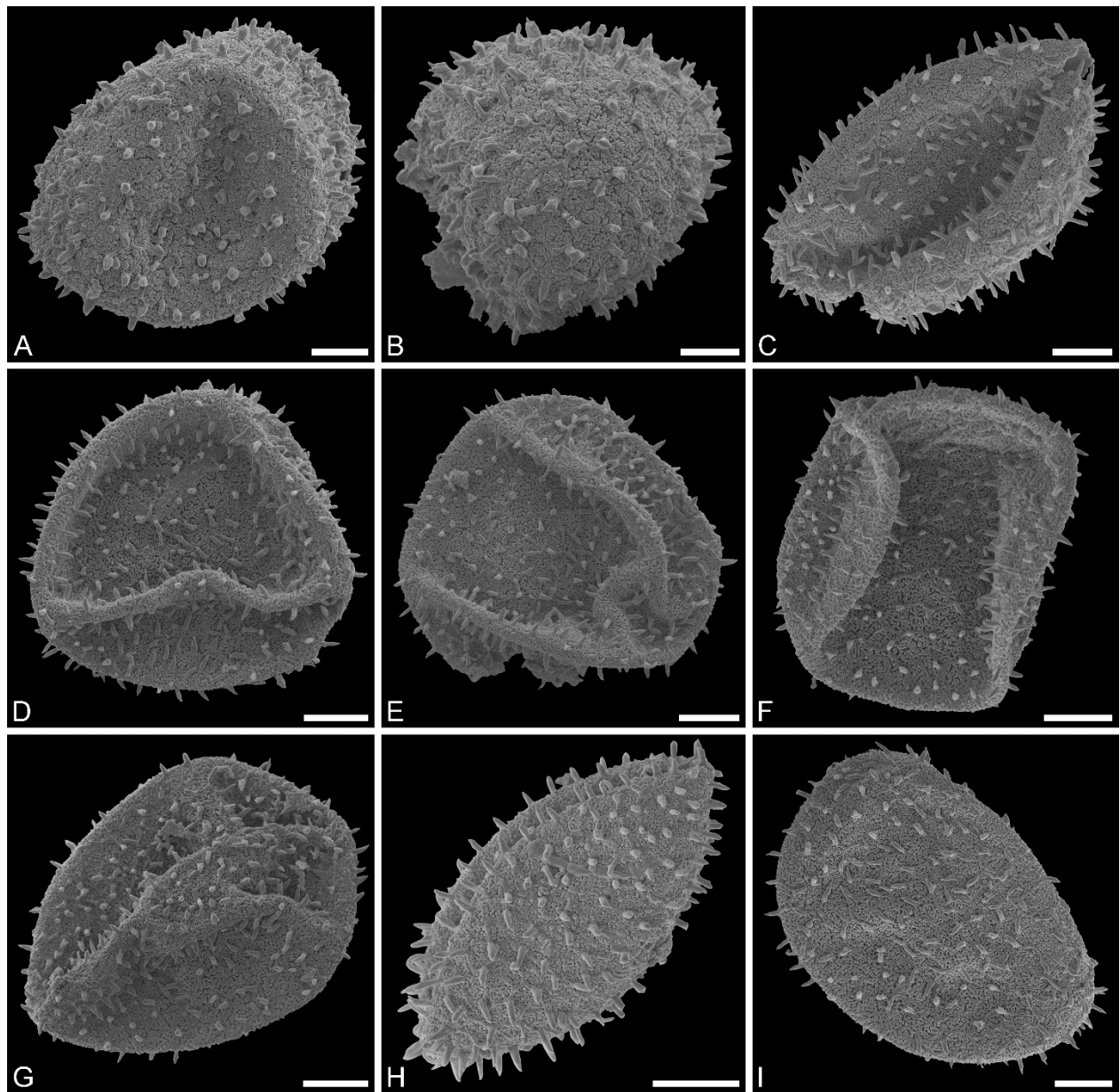
**Article title:** Origin and early evolution of Hydrocharitaceae and the ancestral role of *Stratiotes*

**Content:** Additional LM, SEM, and TEM micrographs of *Stratiotes aloides* pollen

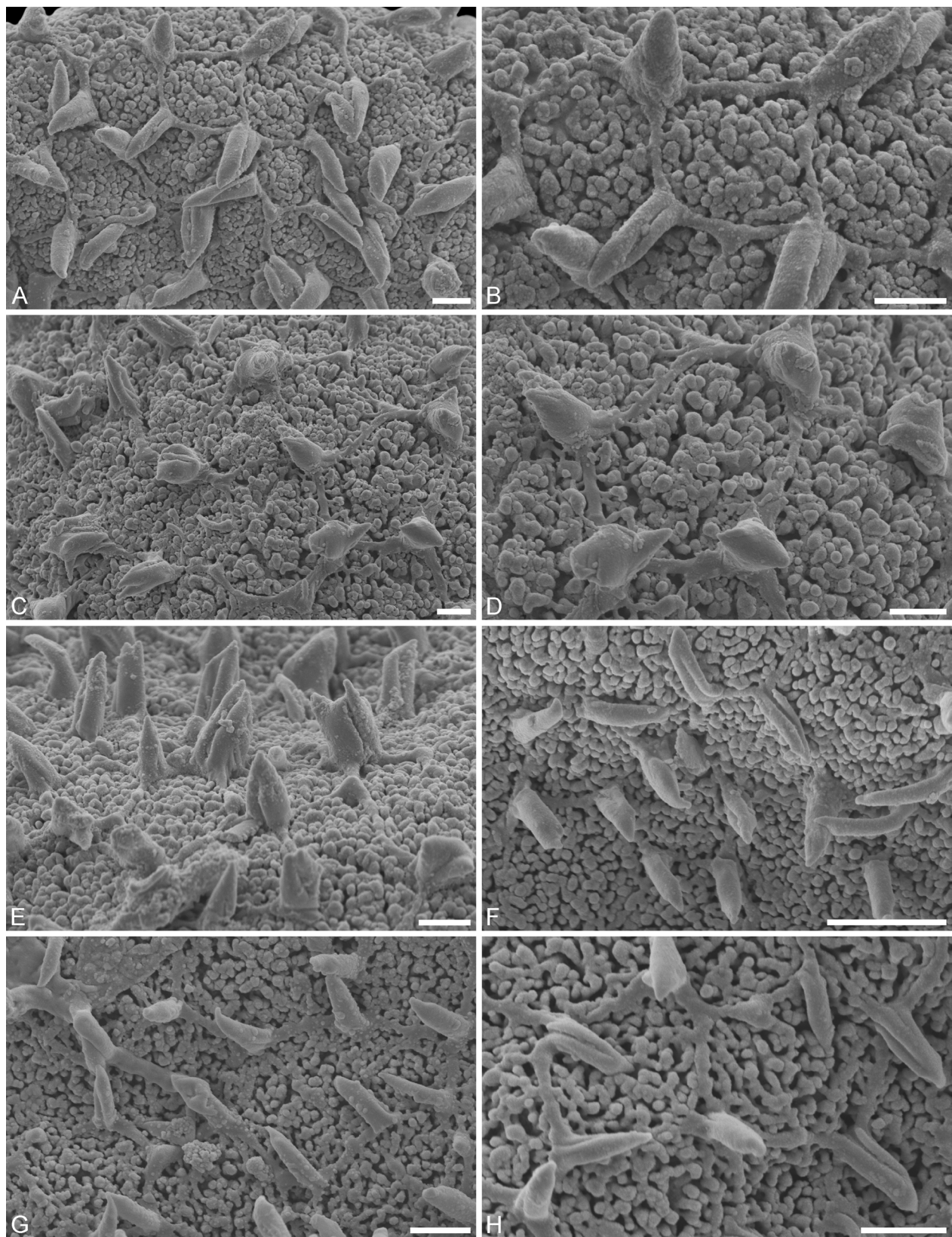


**Plate S1.** *Stratiotes aloides* pollen from herbaria specimens. LM micrographs. **A–C.**

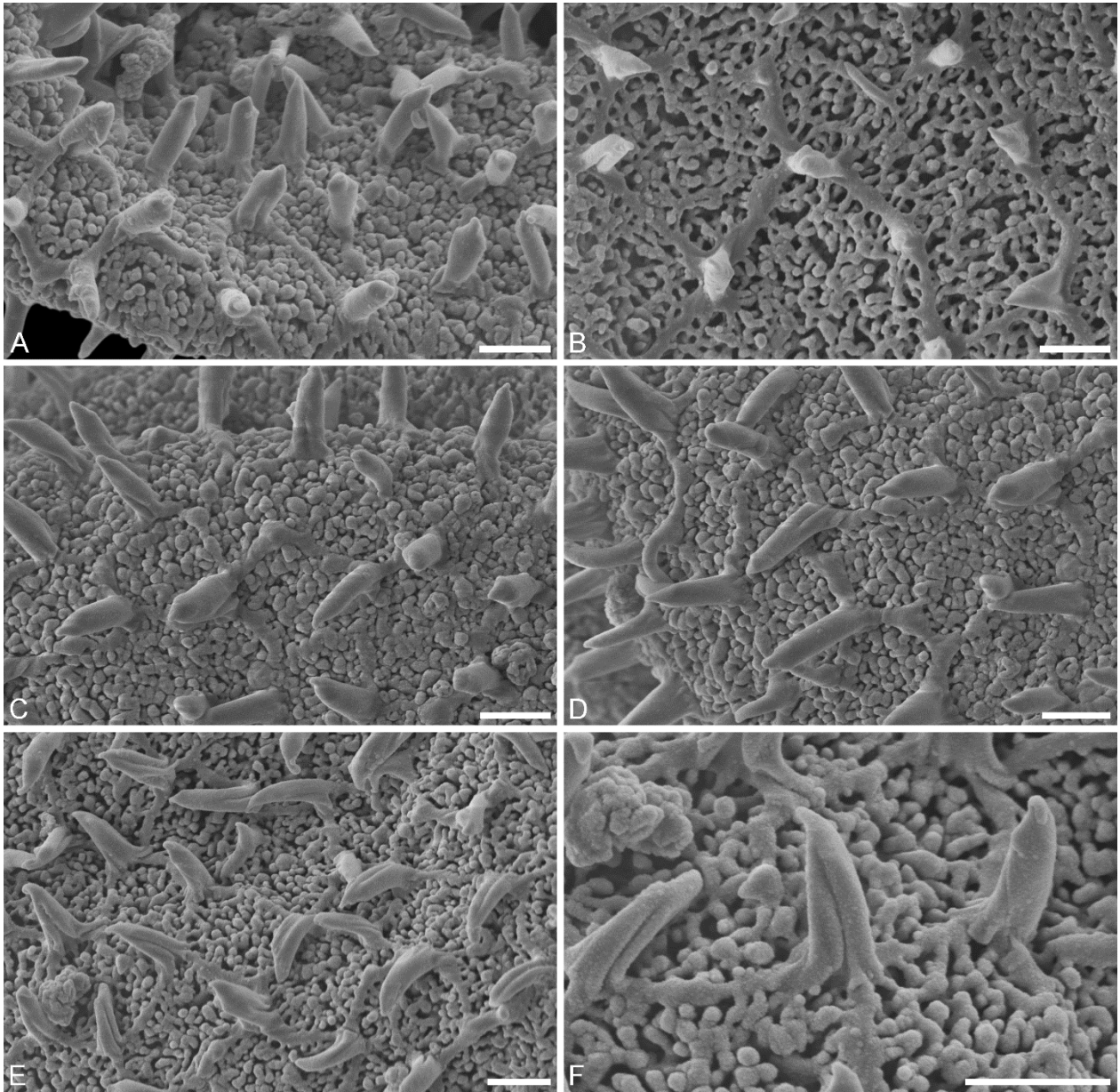
**WU0152793. D–F.** WU0152794. **G–J.** WU0152795. Scale bars – 10  $\mu\text{m}$  (A–J).



**Plate S2.** *Stratiotes aloides* L. pollen from herbaria specimens. SEM micrographs. **A, B.** WU0152793. **C.** WU0152794. **D–I.** WU0152795. Scale bars – 10  $\mu\text{m}$  (A–I).



**Plate S3.** *Stratiotes aloides* L. pollen from herbaria specimens. SEM micrographs of surface sculpture. **A–E.** WU0152793. **F.** WU0152794. **G–H.** WU0152795. Scale bars – 2  $\mu\text{m}$  (A–H).



**Plate S4.** *Stratiotes aloides* L. pollen from herbaria specimens. SEM micrographs of surface sculpture. A–F. WU0152795. Scale bars – 2  $\mu\text{m}$  (A–F).