

Appendix S4 – Identification of ant prey via DNA barcode similarity in NJ tree

Hunting habits die hard: Conserved prey preferences in army ants across two distant neotropical rainforests

Philipp O. Hoenle, Christoph Merkel, David A. Donoso, Adriana A. Argoti, Nico Blüthgen, Christoph von Beeren

*Correspondence to:

Philipp O. Hoenle: philipp.hoenle92@gmail.com

Christoph von Beeren: cvonbeeren@gmail.com

BOLD TaxonID Tree

Title : Tree Result - Search: Tax(Formicidae); Geo(Ecuador); Include public records (8335 records returned) (8335 records selected)

Date : 04-Sep-2023

Data Type : Nucleotide

Distance Model : Kimura 2 Parameter

Marker : COI-5P

Colourization : Barcode Cluster (BIN)

Label : Sample ID

Label : Process ID

Label : Taxon

Label : Country

Label : Exact Site

Label : Barcode Cluster (BIN)

Filter : length > 300bp only

Filter : exclude records flagged as misidentifications

Filter : exclude records with stop codons

Filter : exclude contaminants

Sequence Count : 2307

Species count : 695

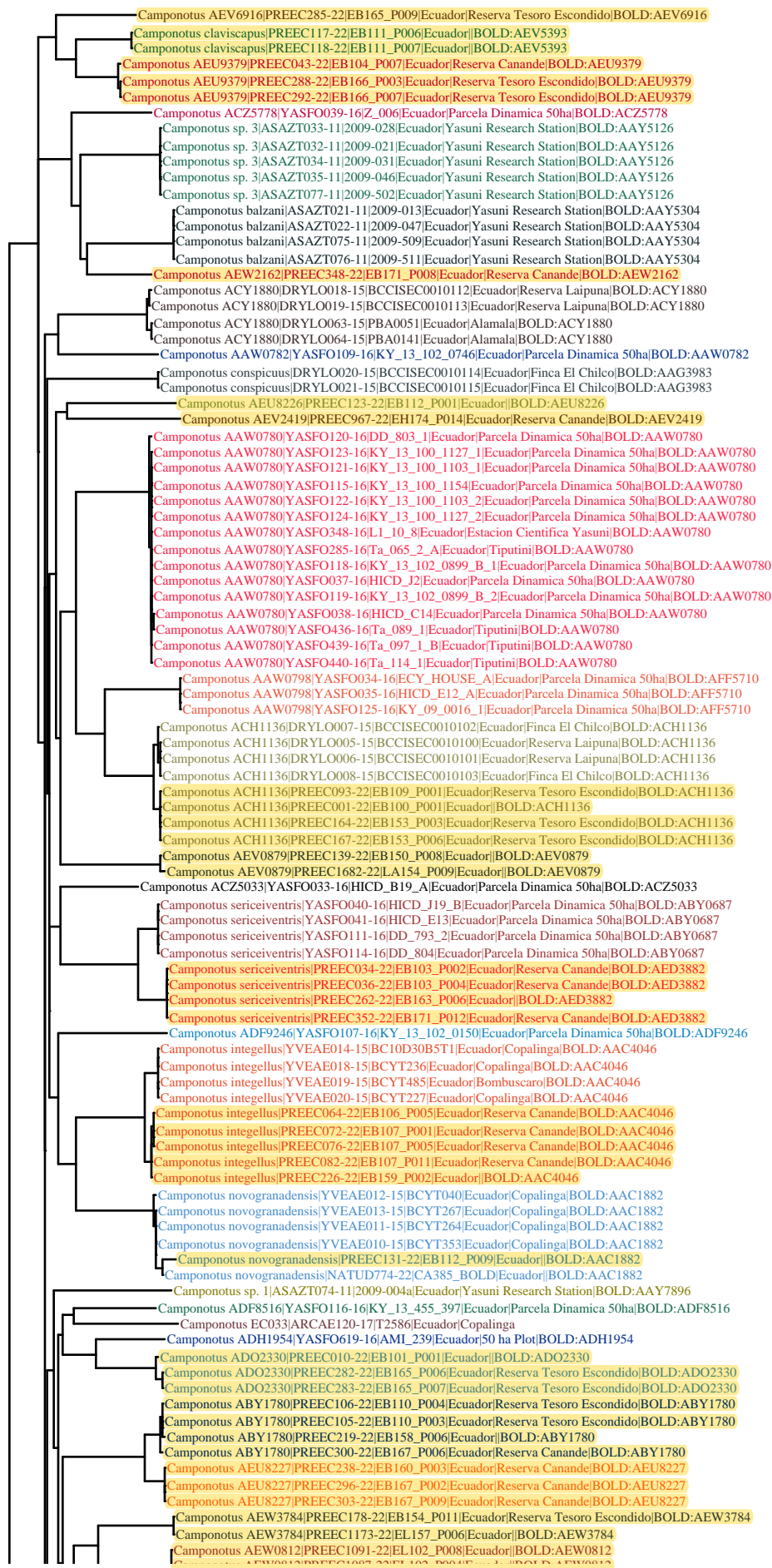
Genus count : 74

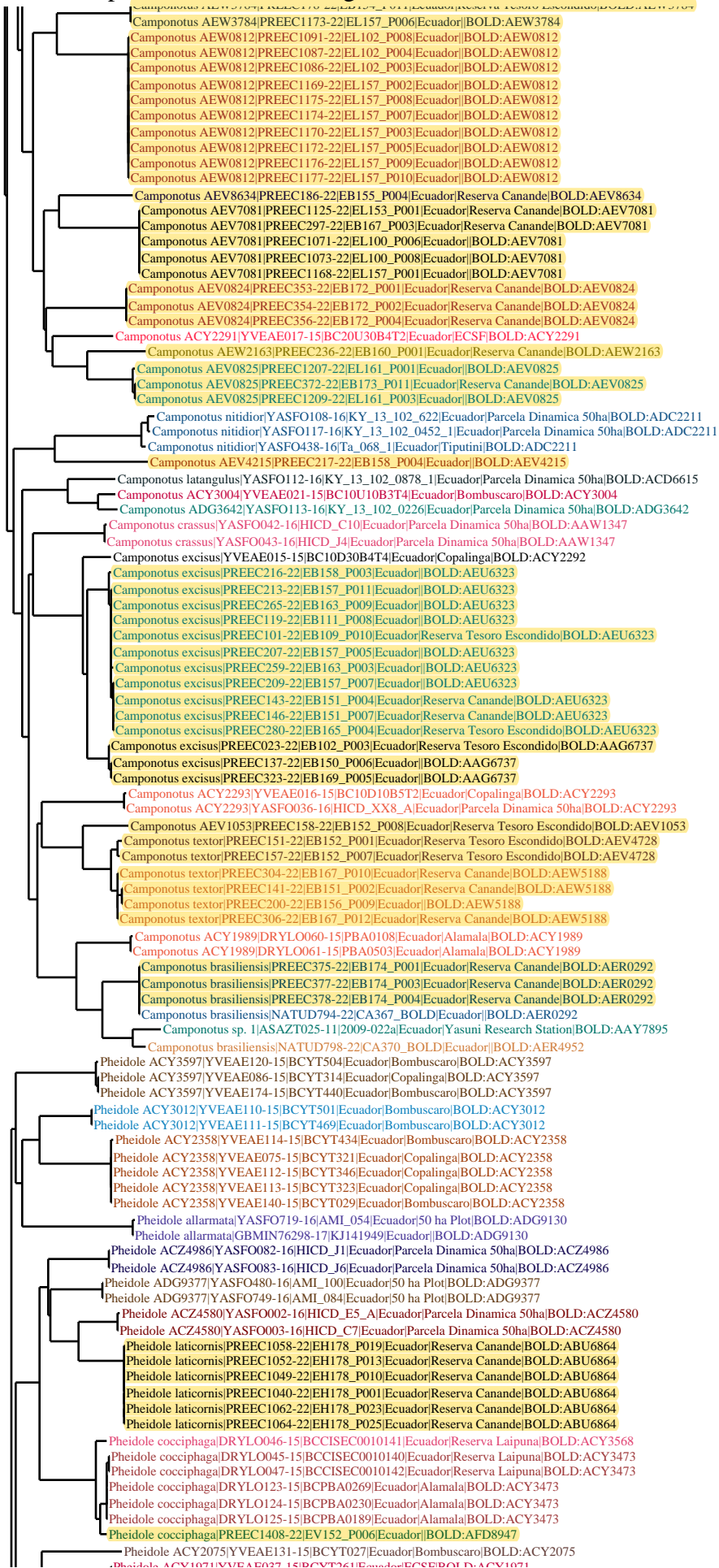
Family count : 1

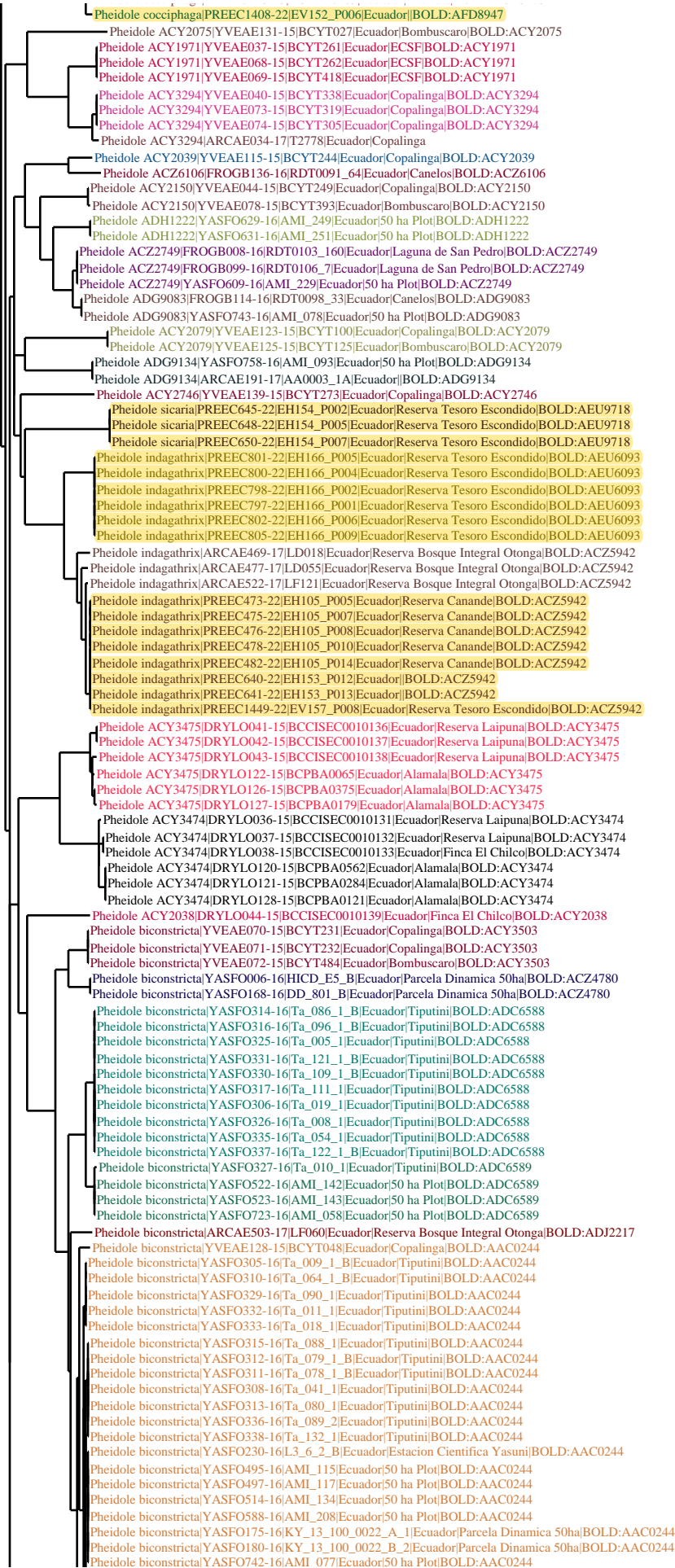
Unidentified : 16

BIN Count : 843

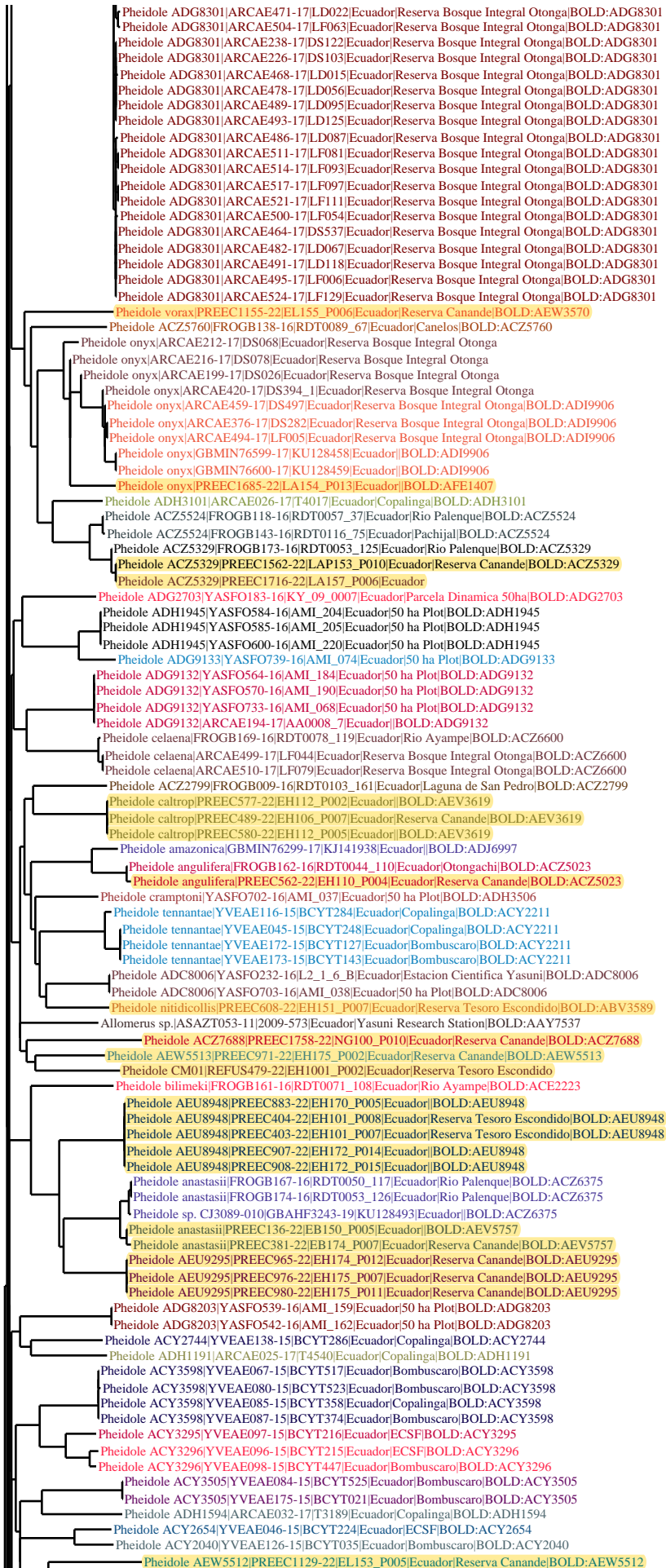
10 %

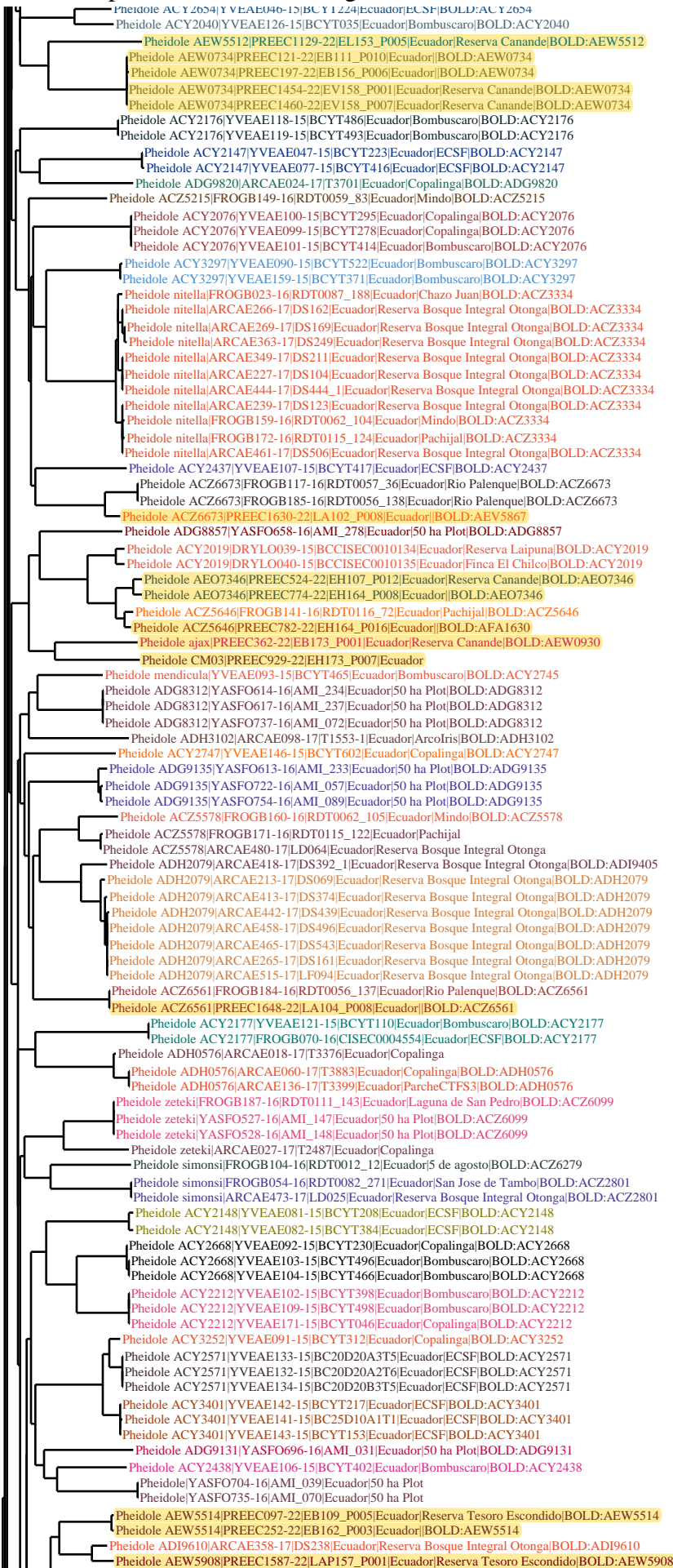


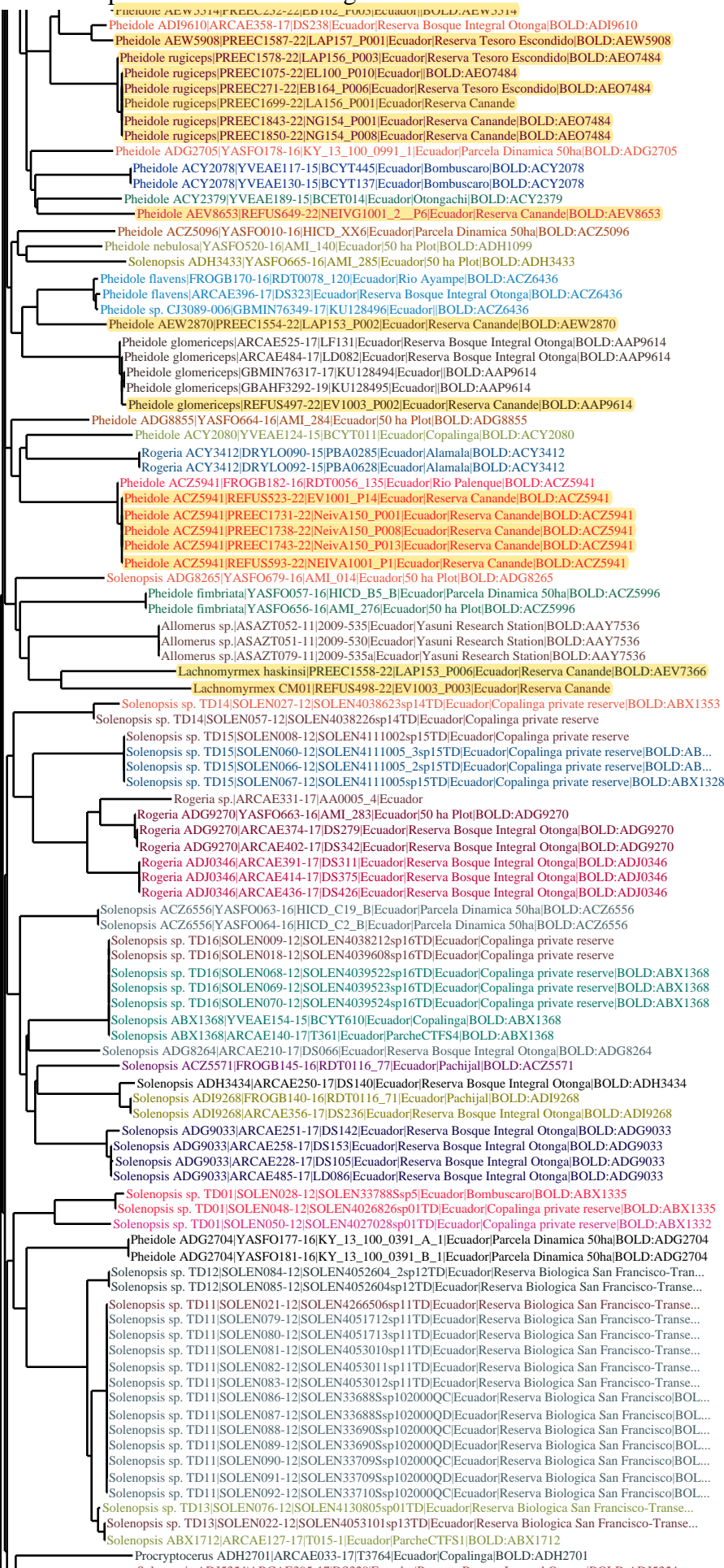




Pheidole biconstricta|YASFO175-16|KY_13_100_0022_A_1|Ecuador|Parcela Dinamica 50ha|BOLD: AAC0244
 Pheidole biconstricta|YASFO180-16|KY_13_100_0022_B_2|Ecuador|Parcela Dinamica 50ha|BOLD: AAC0244
 Pheidole biconstricta|YASFO742-16|AMI_077|Ecuador|50 ha Plot|BOLD: AAC0244
 Pheidole biconstricta|YASFO747-16|AMI_082|Ecuador|50 ha Plot|BOLD: AAC0244
 Pheidole biconstricta|YASFO753-16|AMI_088|Ecuador|50 ha Plot|BOLD: AAC0244
 Pheidole biconstricta|ARCAE193-17|AA0005_2|Ecuador|BOLD: AAC0244
 Pheidole biconstricta|PREEC1034-22|EH177_P044|Ecuador|BOLD: AAC0244
 Pheidole biconstricta|PREEC1030-22|EH177_P040|Ecuador|BOLD: AAC0244
 Pheidole biconstricta|PREEC1033-22|EH177_P043|Ecuador|BOLD: AAC0244
 Pheidole biconstricta|PREEC1035-22|EH177_P045|Ecuador|BOLD: AAC0244
 Pheidole AAP9302|YASFO167-16|KY_13_100_0123_B_2|Ecuador|Parcela Dinamica 50ha|BOLD: AAP9302
 Pheidole AAP9302|YASFO055-16|HICD_C11|Ecuador|Parcela Dinamica 50ha|BOLD: AAP9302
 Pheidole AAP9302|YASFO176-16|KY_13_100_123_A|Ecuador|Parcela Dinamica 50ha|BOLD: AAP9302
 Pheidole astur|YASFO008-16|HICD_B18_B|Ecuador|Parcela Dinamica 50ha|BOLD: ACZ2604
 Pheidole astur|YASFO007-16|HICD_B20_A|Ecuador|Parcela Dinamica 50ha|BOLD: ACZ2604
 Pheidole astur|YASFO170-16|KY_13_102_0785_D|Ecuador|Parcela Dinamica 50ha|BOLD: ACZ2604
 Pheidole astur|YASFO637-16|AMI_257|Ecuador|50 ha Plot|BOLD: ACZ2604
 Pheidole astur|FROGB092-16|CISEC0004555|Ecuador|Chiruisla|BOLD: ACZ2604
 Pheidole astur|YASFO505-16|AMI_125|Ecuador|50 ha Plot|BOLD: ACZ2604
 Pheidole astur|YASFO695-16|AMI_030|Ecuador|50 ha Plot|BOLD: ACZ2604
 Pheidole ulothrix|YASFO500-16|AMI_120|Ecuador|50 ha Plot|BOLD: ACY2149
 Pheidole ulothrix|YVEAE136-15|BCYT142|Ecuador|Bombuscaro|BOLD: ACY2149
 Pheidole ulothrix|YVEAE135-15|BCYT147|Ecuador|Bombuscaro|BOLD: ACY2149
 Pheidole ulothrix|YASFO657-16|AMI_277|Ecuador|50 ha Plot|BOLD: ACY2149
 Pheidole ulothrix|YASFO716-16|AMI_051|Ecuador|50 ha Plot|BOLD: ACY2149
 Pheidole ulothrix|ARCAE039-17|T1789|Ecuador|Copalinga|BOLD: ACY2149
 Pheidole ACZ5885|FROGB158-16|RDT0112_102|Ecuador|Laguna de San Pedro|BOLD: ACZ5885
 Pheidole ACZ4513|YASFO020-16|HICD_B13_A|Ecuador|Parcela Dinamica 50ha|BOLD: ACZ4513
 Pheidole ACZ4513|YASFO169-16|KY_13_102_0364_B|Ecuador|Parcela Dinamica 50ha|BOLD: ACZ4513
 Pheidole ACZ4513|YASFO173-16|KY_13_102_0364_A|Ecuador|Parcela Dinamica 50ha|BOLD: ACZ4513
 Pheidole sensitiva|PREEC1851-22|NG155_P001|Ecuador|Reserva Canande|BOLD: AEU9523
 Pheidole sensitiva|PREEC1855-22|NG155_P005|Ecuador|Reserva Canande|BOLD: AEU9523
 Pheidole ACY2436|YVEAE108-15|BCYT405|Ecuador|Bombuscaro|BOLD: ACY2436
 Pheidole ACY2436|ARCAE028-17|T3921|Ecuador|Copalinga|BOLD: ACY2436
 Pheidole ADG8978|ARCAE061-17|T120Maj|Ecuador|Copalinga
 Pheidole ADG8978|ARCAE062-17|T120Min|Ecuador|Copalinga|BOLD: ADG8978
 Pheidole gauthieri|FROGB033-16|RDT0093_208|Ecuador|Canelos|BOLD: ACZ2746
 Pheidole gauthieri|FROGB087-16|CISEC0004812|Ecuador|Chiruisla|BOLD: ACZ2746
 Pheidole gauthieri|YASFO628-16|AMI_248|Ecuador|50 ha Plot|BOLD: ADG8858
 Pheidole gauthieri|YASFO717-16|AMI_052|Ecuador|50 ha Plot|BOLD: ADG8858
 Pheidole colobopsis|YVEAE083-15|BCYT409|Ecuador|Bombuscaro|BOLD: ACY2151
 Pheidole colobopsis|ARCAE063-17|T2436|Ecuador|Copalinga|BOLD: ACY2151
 Pheidole colobopsis|ARCAE064-17|T2256|Ecuador|Copalinga
 Pheidole CM02|PREEC1700-22|LA156_P002|Ecuador|Reserva Canande
 Pheidole ACZ4760|susannae|YASFO015-16|HICD_E1_A|Ecuador|Parcela Dinamica 50ha|BOLD: ACZ4760
 Pheidole ACY3504|YVEAE039-15|BCYT375|Ecuador|Bombuscaro|BOLD: ACY3504
 Pheidole ACY3504|YVEAE076-15|BCYT313|Ecuador|Copalinga|BOLD: ACY3504
 Pheidole ACY3504|ARCAE029-17|T3223|Ecuador|Copalinga
 Pheidole ACZ2747|susannae|FROGB032-16|RDT0093_207|Ecuador|Canelos|BOLD: ACZ2747
 Pheidole fissiceps|GBMIN76315-17|KJ141937|Ecuador|BOLD: ADV5016
 Pheidole tansycapa|PREEC1163-22|EL156_P002|Ecuador|BOLD: AEU7811
 Pheidole tansycapa|PREEC1830-22|NG153_P002|Ecuador|Reserva Canande|BOLD: AEU7811
 Pheidole tansycapa|PREEC1779-22|NG101_P011|Ecuador|Reserva Canande|BOLD: AEU7811
 Pheidole tansycapa|PREEC1778-22|NG101_P010|Ecuador|Reserva Canande|BOLD: AEU7811
 Pheidole tansycapa|PREEC1772-22|NG101_P003|Ecuador|Reserva Canande|BOLD: AEU7811
 Pheidole tansycapa|PREEC1771-22|NG101_P002|Ecuador|Reserva Canande|BOLD: AEU7811
 Pheidole tansycapa|PREEC1770-22|NG101_P001|Ecuador|Reserva Canande|BOLD: AEU7811
 Pheidole tansycapa|PREEC1196-22|EL160_P001|Ecuador|Reserva Tesoro Escondido|BOLD: AEU7811
 Pheidole tansycapa|REFUS632-22|NEIVA1001_2_P8|Ecuador|Reserva Tesoro Escondido|BOLD: AEU7811
 Pheidole tansycapa|REFUS626-22|NEIVA1001_2_P2|Ecuador|Reserva Tesoro Escondido|BOLD: AEU7811
 Pheidole tansycapa|PREEC1122-22|EL150_P006|Ecuador|Reserva Canande|BOLD: AEU7811
 Pheidole tansycapa|PREEC1198-22|EL160_P003|Ecuador|Reserva Tesoro Escondido|BOLD: AEU7811
 Pheidole tansycapa|REFUS633-22|NEIVA1001_2_P9|Ecuador|Reserva Tesoro Escondido|BOLD: AEU7811
 Pheidole ACZ5577|PREEC1095-22|EL103_P001|Ecuador|BOLD: ACZ5577
 Pheidole ACZ5577|FROGB183-16|RDT0056_136|Ecuador|Rio Palenque|BOLD: ACZ5577
 Pheidole ACZ5577|PREEC494-22|EH106_P012|Ecuador|Reserva Canande|BOLD: ACZ5577
 Pheidole ACZ5577|PREEC1749-22|NG100_P001|Ecuador|Reserva Canande|BOLD: ACZ5577
 Pheidole ACZ5577|PREEC1341-22|EV105_P010|Ecuador|Reserva Canande|BOLD: ACZ5577
 Pheidole ACZ5577|PREEC1296-22|EM153_P001|Ecuador|Reserva Canande|BOLD: ACZ5577
 Pheidole ACZ5577|PREEC1294-22|EM152_P011|Ecuador|Reserva Canande|BOLD: ACZ5577
 Pheidole ACZ5577|PREEC1236-22|EV100_P022|Ecuador|Reserva Canande|BOLD: ACZ5577
 Pheidole ACZ5577|PREEC1235-22|EV100_P021|Ecuador|Reserva Canande|BOLD: ACZ5577
 Pheidole ACZ5577|PREEC1233-22|EV100_P019|Ecuador|Reserva Canande|BOLD: ACZ5577
 Pheidole ACZ5577|PREEC1231-22|EV100_P017|Ecuador|Reserva Canande|BOLD: ACZ5577
 Pheidole ACZ5577|PREEC521-22|EH107_P009|Ecuador|Reserva Canande|BOLD: ACZ5577
 Pheidole ACZ5577|PREEC412-22|EH102_P003|Ecuador|Reserva Tesoro Escondido|BOLD: ACZ5577
 Pheidole ACZ5577|PREEC1751-22|NG100_P003|Ecuador|Reserva Canande|BOLD: ACZ5577
 Pheidole ACZ5577|PREEC868-22|EH169b_P005|Ecuador|BOLD: ACZ5577
 Pheidole ACZ5577|PREEC869-22|EH169b_P006|Ecuador|BOLD: ACZ5577
 Pheidole ACZ5577|PREEC520-22|EH107_P008|Ecuador|Reserva Canande|BOLD: ACZ5577
 Pheidole ACZ5577|PREEC1936-23|EV103_P005_prej|Ecuador|Reserva Tesoro Escondido|BOLD: ACZ5577
 Pheidole ADG9378|YASFO15-16|AMI_135|Ecuador|50 ha Plot|BOLD: ADG9378
 Pheidole ACY3575|YVEAE122-15|BCYT055|Ecuador|Copalinga|BOLD: ACY3575
 Pheidole striaticeps|ARCAE038-17|T1337|Ecuador|ECSF|BOLD: ADG8996
 Pheidole ACY2077|YVEAE127-15|BC15D10A3T4|Ecuador|Copalinga|BOLD: ACY2077
 Pheidole ACY2743|YVEAE137-15|BCYT112|Ecuador|Copalinga|BOLD: ACY2743
 Pheidole ADH0252|YASFO611-16|AMI_231|Ecuador|50 ha Plot|BOLD: ADH0252
 Pheidole ADG8301|ARCAE507-17|LF068|Ecuador|Reserva Bosque Integral Otonga|BOLD: ADJ0428
 Pheidole ADG8301|ARCAE419-17|DS393|Ecuador|Reserva Bosque Integral Otonga|BOLD: ADJ0428
 Pheidole ADG8301|ARCAE513-17|LF089|Ecuador|Reserva Bosque Integral Otonga|BOLD: ADJ0428
 Pheidole ADG8301|ARCAE518-17|LF107|Ecuador|Reserva Bosque Integral Otonga|BOLD: ADG8301
 Pheidole ADG8301|ARCAE497-17|LF026|Ecuador|Reserva Bosque Integral Otonga|BOLD: ADG8301
 Pheidole ADG8301|ARCAE523-17|LF123|Ecuador|Reserva Bosque Integral Otonga|BOLD: ADG8301
 Pheidole ADG8301|ARCAE386-17|DS300|Ecuador|Reserva Bosque Integral Otonga|BOLD: ADG8301
 Pheidole ADG8301|ARCAE378-17|DS284|Ecuador|Reserva Bosque Integral Otonga|BOLD: ADG8301
 Pheidole ADG8301|ARCAE498-17|LF033|Ecuador|Reserva Bosque Integral Otonga|BOLD: ADG8301
 Pheidole ADG8301|ARCAE471-17|LD022|Ecuador|Reserva Bosque Integral Otonga|BOLD: ADG8301
 Pheidole ADG8301|ARCAE504-17|LF063|Ecuador|Reserva Bosque Integral Otonga|BOLD: ADG8301
 Pheidole ADG8301|ARCAE238-17|DS122|Ecuador|Reserva Bosque Integral Otonga|BOLD: ADG8301







Solenopsis ABX1712|ARCAE127-17|T015-1|Ecuador|ParcheCTFS1|BOLD:ABX1712
Procryptocerus ADH2701|ARCAE033-17|T3764|Ecuador|Copalinga|BOLD:ADH2701
Solenopsis ADJ5354|ARCAE395-17|DS320|Ecuador|Reserva Bosque Integral Otonga|BOLD:ADJ5354
Solenopsis ADJ2685|ARCAE333-17|DS170|Ecuador|Reserva Bosque Integral Otonga|BOLD:ADJ2685
Solenopsis ADJ2685|ARCAE334-17|DS171|Ecuador|Reserva Bosque Integral Otonga|BOLD:ADJ2685
Solenopsis ADJ2685|ARCAE347-17|DS209|Ecuador|Reserva Bosque Integral Otonga|BOLD:ADJ2685
Solenopsis ADJ2685|ARCAE342-17|DS199|Ecuador|Reserva Bosque Integral Otonga|BOLD:ADJ2685
Solenopsis ADJ2685|ARCAE408-17|DS360|Ecuador|Reserva Bosque Integral Otonga|BOLD:ADJ2685
Solenopsis ADJ2685|ARCAE417-17|DS384|Ecuador|Reserva Bosque Integral Otonga|BOLD:ADJ2685
Solenopsis ADG9034|ARCAE264-17|DS160|Ecuador|Reserva Bosque Integral Otonga|BOLD:ADG9034
Solenopsis ADG9034|ARCAE240-17|DS124|Ecuador|Reserva Bosque Integral Otonga|BOLD:ADG9034
Solenopsis ADG9034|ARCAE354-17|DS227|Ecuador|Reserva Bosque Integral Otonga|BOLD:ADG9034
Solenopsis ADG9034|ARCAE368-17|DS265|Ecuador|Reserva Bosque Integral Otonga|BOLD:ADG9034
Solenopsis sp. CJ3128-002|GBMIN76602-17|KU128486|Ecuador|BOLD:ADK7804
Solenopsis sp. TD01|SOLEN024-12|SOLEN33807Sp141000QD|Ecuador|Bombuscaro|BOLD:ABX1327
Solenopsis sp. TD15|SOLEN041-12|SOLEN33786Sp4|Ecuador|Bombuscaro|BOLD:ABX1327
Solenopsis sp. TD01|SOLEN031-12|SOLEN33797Sp12B|Ecuador|Bombuscaro|BOLD:ABX1327
Solenopsis sp. TD01|SOLEN010-12|SOLEN4029009sp01TD|Ecuador|Copalinga private reserve
Solenopsis sp. TD01|SOLEN030-12|SOLEN33797Sp121000QD|Ecuador|Bombuscaro|BOLD:ABX1327
Solenopsis sp. TD01|SOLEN033-12|SOLEN33791Sp6|Ecuador|Bombuscaro|BOLD:ABX1327
Solenopsis sp. TD01|SOLEN035-12|SOLEN33791Sp6B|Ecuador|Bombuscaro|BOLD:ABX1327
Solenopsis sp. TD15|SOLEN046-12|SOLEN33805Sp4|Ecuador|Bombuscaro|BOLD:ABX1327
Solenopsis sp. TD01|SOLEN049-12|SOLEN4027026sp01TD|Ecuador|Copalinga private reserve|BOLD:ABX1327
Solenopsis ADI7668|ARCAE327-17|AA0001_6|Ecuador|BOLD:ADI7668
Solenopsis sp. TD06|SOLEN052-12|SOLEN3534109sp06TD|Ecuador|Copalinga private reserve|BOLD:ABX1711
Solenopsis ACY2720|YVEAE150-15|BCYT606|Ecuador|Bombuscaro|BOLD:ACY2720
Solenopsis ACZ3284|FROGB038-16|RDT0083_220|Ecuador|San Jose de Tambo|BOLD:ACZ3284
Solenopsis ACZ3284|FROGB101-16|RDT0072_9|Ecuador|Rio Ayampe|BOLD:ACZ3284
Solenopsis ADC7839|YASFO341-16|Ta_110_1_B|Ecuador|Tiputini|BOLD:ADC7839
Solenopsis ADC7839|YASFO342-16|Ta_091_1_B|Ecuador|Tiputini|BOLD:ADC7839
Solenopsis ADC7839|YASFO343-16|Ta_115_1_B|Ecuador|Tiputini|BOLD:ADC7839
Solenopsis ACZ6555|YASFO061-16|HICD_B18_C|Ecuador|Parcela Dinamica 50ha|BOLD:ACZ6555
Solenopsis ACZ6555|YASFO062-16|HICD_B1_A|Ecuador|Parcela Dinamica 50ha|BOLD:ACZ6555
Solenopsis ACZ6555|YASFO683-16|AMI_018|Ecuador|50 ha Plot|BOLD:ACZ6555
Solenopsis sp. TD22|SOLEN012-12|SOLEN4660902sp22TD|Ecuador|Copalinga private reserve
Solenopsis ACY2719|DRYLO082-15|PBA0640|Ecuador|Alamala|BOLD:ACY2719
Solenopsis ACY2719|DRYLO100-15|BCPBA0154|Ecuador|Alamala|BOLD:ACY2719
Solenopsis ACY2631|DRYLO099-15|BCPBA0458|Ecuador|Alamala|BOLD:ACY2631
Solenopsis ACY2631|DRYLO079-15|PBA0328|Ecuador|Alamala|BOLD:ACY2631
Solenopsis ACY2631|DRYLO077-15|PBA0090|Ecuador|Alamala|BOLD:ACY2631
Solenopsis ACY2631|DRYLO078-15|PBA0115|Ecuador|Alamala|BOLD:ACY2631
Solenopsis ACY2631|DRYLO102-15|BCPBA0029|Ecuador|Alamala|BOLD:ACY2631
Solenopsis ACY2631|DRYLO105-15|BCPBA0057|Ecuador|Alamala|BOLD:ACY2631
Solenopsis ACY3042|DRYLO080-15|PBA0493|Ecuador|Alamala|BOLD:AFD6163
Solenopsis ACY3042|FROGB176-16|RDT0076_129|Ecuador|Rio Ayampe|BOLD:AFD5688
Solenopsis ACY3042|DRYLO081-15|PBA0632|Ecuador|Alamala|BOLD:AFD6440
Solenopsis ACY3042|DRYLO097-15|BCPBA0130|Ecuador|Alamala|BOLD:AFD6440
Solenopsis ACY3042|DRYLO101-15|BCPBA0036|Ecuador|Alamala|BOLD:AFD6440
Solenopsis ACY3042|DRYLO103-15|BCPBA0094|Ecuador|Alamala|BOLD:ACY3042
Solenopsis ACY3042|DRYLO083-15|PBA0565|Ecuador|Alamala|BOLD:ACY3042
Solenopsis ACY3042|DRYLO084-15|PBA0278|Ecuador|Alamala|BOLD:ACY3042
Solenopsis ACY3042|DRYLO085-15|PBA0465|Ecuador|Alamala|BOLD:ACY3042
Solenopsis ACY3042|DRYLO107-15|BCPBA0166|Ecuador|Alamala|BOLD:ACY3042
Solenopsis ACY3042|ARCAE406-17|DS349|Ecuador|Reserva Bosque Integral Otonga|BOLD:ACY3042
Solenopsis ACZ5572|FROGB131-16|RDT0088_59|Ecuador|Guanujo|BOLD:ACZ5572
Solenopsis ACZ5995|ARCAE467-17|LD012|Ecuador|Reserva Bosque Integral Otonga|BOLD:ADG8437
Solenopsis ACZ5995|ARCAE433-17|DS420|Ecuador|Reserva Bosque Integral Otonga|BOLD:ADG8437
Solenopsis ACZ5995|ARCAE242-17|DS126|Ecuador|Reserva Bosque Integral Otonga|BOLD:ADG8437
Solenopsis ACZ5995|ARCAE412-17|DS371|Ecuador|Reserva Bosque Integral Otonga|BOLD:ADG8437
Solenopsis ACZ5995|ARCAE389-17|DS307|Ecuador|Reserva Bosque Integral Otonga|BOLD:ADG8437
Solenopsis ACZ5995|ARCAE463-17|DS534|Ecuador|Reserva Bosque Integral Otonga|BOLD:ADG8437
Solenopsis ACZ5995|ARCAE384-17|DS296|Ecuador|Reserva Bosque Integral Otonga|BOLD:ADG8437
Solenopsis ACZ5995|ARCAE409-17|DS361|Ecuador|Reserva Bosque Integral Otonga|BOLD:ADG8437
Solenopsis ACZ5995|ARCAE351-17|DS213|Ecuador|Reserva Bosque Integral Otonga|BOLD:ADG8437
Solenopsis ACZ5995|ARCAE445-17|DS450|Ecuador|Reserva Bosque Integral Otonga|BOLD:ADG8437
Solenopsis ACZ5995|ARCAE516-17|LF095|Ecuador|Reserva Bosque Integral Otonga|BOLD:ADG8437
Solenopsis ACZ5995|ARCAE360-17|DS240|Ecuador|Reserva Bosque Integral Otonga|BOLD:ACZ5995
Solenopsis ACZ5995|ARCAE335-17|DS172|Ecuador|Reserva Bosque Integral Otonga|BOLD:ACZ5995
Solenopsis ACZ5995|ARCAE268-17|DS164|Ecuador|Reserva Bosque Integral Otonga|BOLD:ACZ5995
Solenopsis ACZ5995|ARCAE257-17|DS152|Ecuador|Reserva Bosque Integral Otonga|BOLD:ACZ5995
Solenopsis ACZ5995|ARCAE352-17|DS223|Ecuador|Reserva Bosque Integral Otonga|BOLD:ACZ5995
Solenopsis ACZ5995|ARCAE231-17|DS108|Ecuador|Reserva Bosque Integral Otonga|BOLD:ACZ5995
Solenopsis ACZ5995|FROGB157-16|RDT0047_99|Ecuador|Otagachi|BOLD:ACZ5995
Solenopsis ACZ5995|ARCAE481-17|LD066|Ecuador|Reserva Bosque Integral Otonga|BOLD:ACZ5995
Solenopsis ACZ5995|ARCAE483-17|LD075|Ecuador|Reserva Bosque Integral Otonga|BOLD:ACZ5995
Solenopsis ACZ5995|ARCAE492-17|LD120|Ecuador|Reserva Bosque Integral Otonga|BOLD:ACZ5995
Solenopsis sp. CJ3128-001|GBAHF3279-19|KU128485|Ecuador|BOLD:ADS7494
Solenopsis ACY2721|YVEAE160-15|BCYT616|Ecuador|ECSF|BOLD:ACY2721
Solenopsis ACY2721|YVEAE161-15|BCYT617|Ecuador|ECSF|BOLD:ACY2721
Solenopsis sp. TD01|SOLEN020-12|SOLEN4049004sp01TD|Ecuador|Reserva Biologica San Francisco-Transe...
Solenopsis ABX1334|YVEAE164-15|BCYT620|Ecuador|ECSF|BOLD:ABX1334
Solenopsis sp. TD01|SOLEN077-12|SOLEN4131005sp01TD|Ecuador|Reserva Biologica San Francisco-Transe...
Solenopsis sp. TD01|SOLEN075-12|SOLEN4054604sp01TD|Ecuador|Reserva Biologica San Francisco-Transe...
Solenopsis sp. TD01|SOLEN074-12|SOLEN4053106sp01TD|Ecuador|Reserva Biologica San Francisco-Transe...
Solenopsis sp. TD01|SOLEN073-12|SOLEN4048807sp01TD|Ecuador|Reserva Biologica San Francisco-Transe...
Solenopsis sp. TD01|SOLEN078-12|SOLEN4134704sp01TD|Ecuador|Reserva Biologica San Francisco-Transe...
Solenopsis ABX1334|YVEAE168-15|BCYT624|Ecuador|ECSF|BOLD:ABX1334
Solenopsis ACY2722|YVEAE163-15|BCYT619|Ecuador|ECSF|BOLD:ACY2722
Solenopsis ACY2722|YVEAE162-15|BCYT618|Ecuador|ECSF|BOLD:ACY2722
Solenopsis ACY2722|YVEAE169-15|BCYT625|Ecuador|ECSF|BOLD:ACY2722
Solenopsis ACY2723|YVEAE165-15|BCYT621|Ecuador|ECSF|BOLD:ACY2723
Solenopsis ACY2723|YVEAE170-15|BCYT626|Ecuador|ECSF|BOLD:ACY2723
Solenopsis MAS006|ARCAE496-17|LF007|Ecuador|Reserva Bosque Integral Otonga|BOLD:AAE8669
Solenopsis sp. TD01|SOLEN029-12|SOLEN33791Sp201000QD|Ecuador|Bombuscaro
Solenopsis sp. TD01|SOLEN011-12|SOLEN4128010sp01TD|Ecuador|Copalinga private reserve
Solenopsis sp. TD01|SOLEN047-12|SOLEN3464908sp01TD|Ecuador|Copalinga private reserve|BOLD:ACE7308
Solenopsis sp. TD15|SOLEN064-12|SOLEN4110107sp15TD|Ecuador|Copalinga private reserve|BOLD:ACF3833
Solenopsis sp. TD15|SOLEN065-12|SOLEN4110108sp15TD|Ecuador|Copalinga private reserve|BOLD:ACF3833
Solenopsis sp. TD15|SOLEN047-12|SOLEN33795Sp121000QD|Ecuador|Bombuscaro|BOLD:ACF3833

Solenopsis sp. TD15|SOLEN064-12|SOLEN4110107sp15TD|Ecuador|Copalinga private reserve|BOLD:ACF3833
Solenopsis sp. TD15|SOLEN065-12|SOLEN4110108sp15TD|Ecuador|Copalinga private reserve|BOLD:ACF3833
Solenopsis sp. TD15|SOLEN042-12|SOLEN33795Ssp121000QD|Ecuador|Bombuscaro|BOLD:ACF3835
Solenopsis sp. TD15|SOLEN045-12|SOLEN33803CSsp16|Ecuador|Bombuscaro|BOLD:ACF3835
Solenopsis sp. TD15|SOLEN026-12|SOLEN33768Ssp41000QC|Ecuador|Bombuscaro
Solenopsis ACF3835|YVEAE145-15|BCYT601|Ecuador|Copalinga|BOLD:ACF3835
Solenopsis ACF3835|YVEAE148-15|BCYT604|Ecuador|Bombuscaro|BOLD:ACF3835
Solenopsis ACF3835|YVEAE147-15|BCYT603|Ecuador|Bombuscaro|BOLD:ACF3835
Solenopsis sp. TD15|SOLEN043-12|SOLEN33803ASsp16|Ecuador|Bombuscaro|BOLD:ACF3835
Solenopsis sp. TD15|SOLEN044-12|SOLEN33803BSsp16|Ecuador|Bombuscaro|BOLD:ACF3835
Solenopsis sp. TD01|SOLEN025-12|SOLEN3463507sp01TD|Ecuador|Copalinga private reserve|BOLD:ACF3835
Solenopsis sp. TD15|SOLEN040-12|SOLEN33768Ssp4|Ecuador|Bombuscaro|BOLD:ACF3835
Solenopsis ACF3835|YVEAE149-15|BCYT605|Ecuador|Bombuscaro|BOLD:ACF3835
Solenopsis ACF3835|YVEAE151-15|BCYT607|Ecuador|Bombuscaro|BOLD:ACF3835
Solenopsis sp. TD15|SOLEN062-12|SOLEN4040015sp15TD|Ecuador|Copalinga private reserve|BOLD:ABX1329
Solenopsis sp. TD15|SOLEN104-12|SOLEN33709Ssp9|Ecuador|Reserva Biologica San Francisco|BOLD:AB...
Solenopsis sp. TD15|SOLEN100-12|SOLEN33707Ssp7|Ecuador|Reserva Biologica San Francisco|BOLD:AB...
Solenopsis sp. TD15|SOLEN093-12|SOLEN33688Ssp7|Ecuador|Reserva Biologica San Francisco|BOLD:AB...
Solenopsis sp. TD15|SOLEN094-12|SOLEN33688Ssp72000Q|Ecuador|Reserva Biologica San Francisco|BOLD...
Solenopsis sp. TD15|SOLEN095-12|SOLEN33696Ssp72000Q|Ecuador|Reserva Biologica San Francisco|BOLD...
Solenopsis sp. TD15|SOLEN097-12|SOLEN33703Ssp7|Ecuador|Reserva Biologica San Francisco|BOLD:AB...
Solenopsis sp. TD15|SOLEN099-12|SOLEN33705Ssp7|Ecuador|Reserva Biologica San Francisco|BOLD:AB...
Solenopsis sp. TD15|SOLEN102-12|SOLEN33708Ssp7|Ecuador|Reserva Biologica San Francisco|BOLD:AB...
Solenopsis sp. TD15|SOLEN103-12|SOLEN33708Ssp72000Q|Ecuador|Reserva Biologica San Francisco|BOLD...
Solenopsis sp. TD15|SOLEN105-12|SOLEN33710Ssp7|Ecuador|Reserva Biologica San Francisco|BOLD:AB...
Solenopsis sp. TD15|SOLEN098-12|SOLEN33703Ssp72000Q|Ecuador|Reserva Biologica San Francisco|BOLD...
Solenopsis sp. TD15|SOLEN096-12|SOLEN33702Ssp9|Ecuador|Reserva Biologica San Francisco|BOLD:AB...
Solenopsis sp. TD15|SOLEN101-12|SOLEN33707Ssp72000Q|Ecuador|Reserva Biologica San Francisco|BOLD...
Solenopsis sp. TD15|SOLEN106-12|SOLEN33710Ssp9|Ecuador|Reserva Biologica San Francisco|BOLD:AB...
Solenopsis sp. TD15|SOLEN063-12|SOLEN4044510sp15TD|Ecuador|Copalinga private reserve|BOLD:ABX1329
Solenopsis sp. TD15|SOLEN061-12|SOLEN4036322sp15TD|Ecuador|Copalinga private reserve|BOLD:ABX1329
Solenopsis ACF3835|YVEAE153-15|BCYT609|Ecuador|Copalinga|BOLD:ABX1329
Solenopsis ACF3835|YVEAE155-15|BCYT611|Ecuador|Copalinga|BOLD:ABX1329
Solenopsis sp. TD14|SOLEN014-12|SOLEN4034412sp14TD|Ecuador|Copalinga private reserve
Solenopsis sp. TD14|SOLEN015-12|SOLEN4034811sp14TD|Ecuador|Copalinga private reserve
Solenopsis ACF3835|YVEAE156-15|BCYT612|Ecuador|Copalinga|BOLD:ACY2169
Solenopsis sp. TD15|SOLEN017-12|SOLEN4037905sp15TD|Ecuador|Copalinga private reserve
Solenopsis sp. TD14|SOLEN016-12|SOLEN4040310sp14TD|Ecuador|Copalinga private reserve
Solenopsis sp. TD01|SOLEN013-12|SOLEN4038719sp01TD|Ecuador|Copalinga private reserve
Solenopsis sp. TD01|SOLEN053-12|SOLEN4111406_2sp01TD|Ecuador|Copalinga private reserve|BOLD:AB...
Solenopsis sp. TD01|SOLEN054-12|SOLEN4111406sp01TD|Ecuador|Copalinga private reserve|BOLD:ABX1333
Solenopsis sp. TD14|SOLEN056-12|SOLEN4035120sp14TD|Ecuador|Copalinga private reserve|BOLD:ABX1333
Solenopsis ABX1333|YVEAE152-15|BCYT608|Ecuador|Copalinga|BOLD:ABX1333
Solenopsis ACY2168|YVEAE158-15|BCYT614|Ecuador|Bombuscaro|BOLD:ACY2168
Solenopsis ACY2724|YVEAE144-15|BCYT600|Ecuador|Copalinga|BOLD:ACY2724
Solenopsis ABZ4483|ARCAE430-17|DS412|Ecuador|Reserva Bosque Integral Otonga|BOLD:ABZ4483
Solenopsis ABZ4483|ARCAE379-17|DS285|Ecuador|Reserva Bosque Integral Otonga|BOLD:ABZ4483
Solenopsis ABZ4483|ARCAE421-17|DS397|Ecuador|Reserva Bosque Integral Otonga|BOLD:ABZ4483
Solenopsis ABZ4483|FROGB096-16|RDT0013_4|Ecuador|Cubel|BOLD:ABZ4483
Solenopsis ABZ4483|FROGB164-16|RDT0036_114|Ecuador|Villa Hermosa|BOLD:ABZ4483
Solenopsis ABZ4483|FROGB186-16|RDT0056_139|Ecuador|Rio Palenque|BOLD:ABZ4483
Solenopsis ABZ4483|ARCAE519-17|LF108|Ecuador|Reserva Bosque Integral Otonga|BOLD:ABZ4483
Solenopsis sp. CJ3128-003|GBAHF3278-19|KU128491|Ecuador|BOLD:ABZ4483
Solenopsis sp. TD21|SOLEN019-12|SOLEN4036323sp21TD|Ecuador|Copalinga private reserve
Solenopsis sp. TD14|SOLEN058-12|SOLEN4039527sp14TD|Ecuador|Copalinga private reserve|BOLD:ABX1354
Solenopsis sp. TD14|SOLEN059-12|SOLEN4039528sp14TD|Ecuador|Copalinga private reserve|BOLD:ABX1354
Solenopsis ACY2513|YVEAE157-15|BCYT613|Ecuador|Bombuscaro|BOLD:ACY2513
Solenopsis geminata|YASFO022-16|HICD_C2_A|Ecuador|Parcela Dinamica 50ha|BOLD:ADF9787
Solenopsis geminata|YASFO188-16|KY_6_01_13_1|Ecuador|Parcela Dinamica 50ha|BOLD:ADF9787
Solenopsis geminata|DRYLO027-15|BCCISEC0010121|Ecuador|Reserva Laipuna|BOLD:ACY1904
Solenopsis geminata|DRYLO026-15|BCCISEC0010120|Ecuador|Reserva Laipuna|BOLD:ACY2094
Solenopsis geminata|DRYLO028-15|BCCISEC0010122|Ecuador|Reserva Laipuna|BOLD:ACY2094
Solenopsis geminata|DRYLO074-15|PBA0153|Ecuador|Alamala|BOLD:ACY2093
Solenopsis geminata|DRYLO075-15|PBA0164|Ecuador|Alamala|BOLD:ACY2093
Solenopsis geminata|GBMIN76569-17|KY120266|Ecuador|BOLD:ACJ4296
Solenopsis geminata|GBAHF3073-19|KY120264|Ecuador|BOLD:ACJ4296
Solenopsis geminata|GBAHF3074-19|KY120265|Ecuador|BOLD:ACJ4296
Solenopsis geminata|PREEC1923-22|NH100_P001|Ecuador|BOLD:ACJ4296
Solenopsis geminata|PREEC1933-22|NH100_P011|Ecuador|BOLD:ACJ4296
Rogeria ADG8458|YASFO508-16|AMI_128|Ecuador|50 ha Plot|BOLD:ADG8458
Rogeria ADG8458|YASFO709-16|AMI_044|Ecuador|50 ha Plot|BOLD:ADG8458
Solenopsis terricola|ARCAE200-17|DS029|Ecuador|Otongachi
Solenopsis sp. TD01|SOLEN032-12|SOLEN33798Ssp121000QD|Ecuador|Bombuscaro|BOLD:ABX1331
Solenopsis sp. TD07|SOLEN038-12|SOLEN33791Ssp14|Ecuador|Bombuscaro|BOLD:ABX1367
Solenopsis sp. TD07|SOLEN039-12|SOLEN33802Ssp14|Ecuador|Bombuscaro|BOLD:ABX1367
Solenopsis sp. TD07|SOLEN055-12|SOLEN4038215sp07TD|Ecuador|Copalinga private reserve|BOLD:ABX1367
Solenopsis ADH3132|ARCAE267-17|DS163|Ecuador|Reserva Bosque Integral Otonga|BOLD:ADH3132
Solenopsis ADH3132|ARCAE387-17|DS302|Ecuador|Reserva Bosque Integral Otonga|BOLD:ADH3132
Solenopsis ADH3132|ARCAE394-17|DS319|Ecuador|Reserva Bosque Integral Otonga|BOLD:ADH3132
Solenopsis ADH3132|ARCAE405-17|DS348|Ecuador|Reserva Bosque Integral Otonga|BOLD:ADH3132
Solenopsis ADG9035|ARCAE380-17|DS286|Ecuador|Reserva Bosque Integral Otonga|BOLD:ADG9035
Solenopsis ADG9035|ARCAE346-17|DS208|Ecuador|Reserva Bosque Integral Otonga|BOLD:ADG9035
Solenopsis ADG9035|ARCAE241-17|DS125|Ecuador|Reserva Bosque Integral Otonga|BOLD:ADG9035
Solenopsis ADG9035|ARCAE343-17|DS200|Ecuador|Reserva Bosque Integral Otonga|BOLD:ADG9035
Solenopsis ADG9035|ARCAE220-17|DS090|Ecuador|Reserva Bosque Integral Otonga|BOLD:ADG9035
Solenopsis ADG9035|ARCAE211-17|DS067|Ecuador|Reserva Bosque Integral Otonga|BOLD:ADG9035
Solenopsis ADG9035|ARCAE434-17|DS422|Ecuador|Reserva Bosque Integral Otonga|BOLD:ADG9035
Solenopsis sp. TD02|SOLEN034-12|SOLEN33791Ssp61000Q|Ecuador|Bombuscaro|BOLD:ABX1352
Solenopsis sp. TD02|SOLEN036-12|SOLEN33801Ssp6|Ecuador|Bombuscaro|BOLD:ABX1352
Solenopsis sp. TD02|SOLEN037-12|SOLEN33803Ssp61000Q|Ecuador|Bombuscaro|BOLD:ABX1352
Solenopsis sp. TD02|SOLEN023-12|SOLEN3653104sp02TD|Ecuador|Copalinga private reserve|BOLD:ABX1352
Solenopsis sp. TD02|SOLEN051-12|SOLEN3653106sp02TD|Ecuador|Copalinga private reserve|BOLD:ABX1352
Solenopsis ACZ3174|FROGB089-16|CISEC0005078|Ecuador|Chiruisa|BOLD:ACZ3174
Solenopsis ADS4656|ARCAE329-17|AA0005_7|Ecuador
Solenopsis sp. TD18|SOLEN071-12|SOLEN4037710_2sp18TD|Ecuador|Copalinga private reserve|BOLD:AB...
Solenopsis sp. TD18|SOLEN072-12|SOLEN4037710sp18TD|Ecuador|Copalinga private reserve|BOLD:ABX1710
Solenopsis sp.|ARCAE359-17|DS239|Ecuador|Reserva Bosque Integral Otonga
Solenopsis sp.|ARCAE330-17|AA0006_4|Ecuador
Solenopsis sp. CJ3116-006|GBMIN76601-17|KU128483|Ecuador|BOLD:AAAN9169

