

Appendix S2 – Overview images of prey collection

Hunting habits die hard: Conserved prey preferences in army ants across distant two neotropical rainforests

Philipp O. Hoenle, Christoph Merkel, David A. Donoso, Adriana A. Argoti, Nico Blüthgen, Christoph von Beeren

*Correspondence to:

Philipp O. Hoenle: philipp.hoenle92@gmail.com

Christoph von Beeren: cvonbeeren@gmail.com

Overview images of prey items are provided below for each collection event (raid or emigration). Given is the collection ID number (e.g., CH1000) and the ID number of the prey (first image only 1 prey item: prey item 1). Note that we added one or two zeros to the prey numbers in the BOLD Systems database and in Dryad file 1 (<https://doi.org/10.5061/dryad.zcrjdfnkc>; e.g., CH1000_P01 and EB102_P003). The letter "P" stands for "Prey". Identifications of prey items are provided in Dryad file 1. We used the following abbreviations to denote army ant species, although the reader should refer to Dryad file 1 to verify the identifications as in several occasions army ant species were initially misidentified in the field: *Cheliomyrmex andicola* (CH), *Eciton burchellii* (EB), *Eciton hamatum* (EH), *Eciton lucanoides* (EL), *Eciton mexicanum* (EM), *Eciton vagans* (EV), *Labidus praedator* (LAP), *Labidus spininodes* (LA), *Neivamyrmex asper* (NEIVA), *Neivamyrmex curvinotus* (NEIVU), *Neivamyrmex gibbatus* (NEIVG), *Nomamyrmex esenbeckii* (NO), and *Nomamyrmex hartigii* (NH). Images were taken by Christoph Merkel and Philipp Hoenle.

CH1000



1





1

2

3

4

5

7

6

8

9

10

11



5

6

7

8

9

10

11

2

3

4





4

5

6

7

8

9

11

12

10



7

3

4

5

8

9

11

12

1



2



3



4



Vatesus ant guest, not a prey item



EB103





1

2

3

4



5

6

7

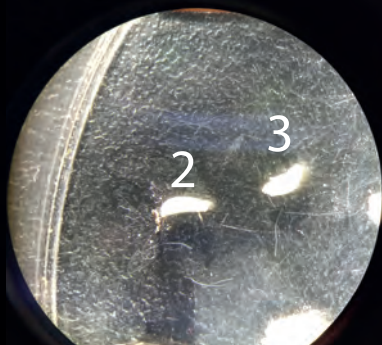
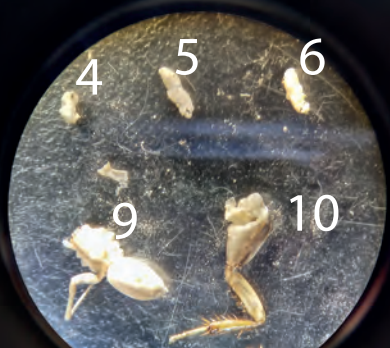
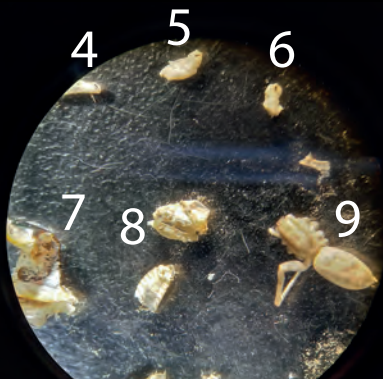
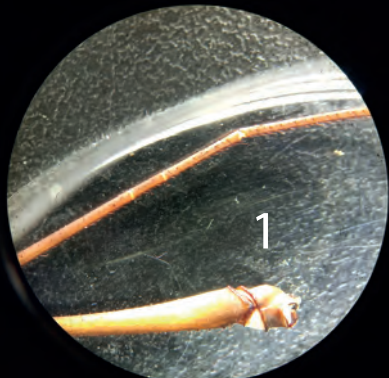
8

9

10

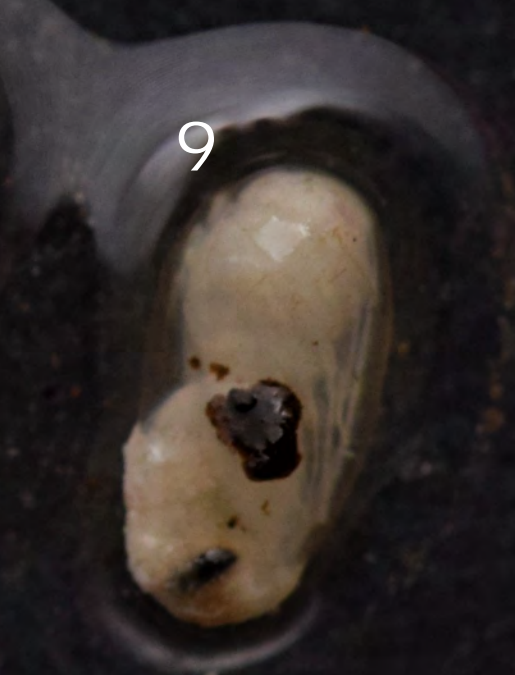
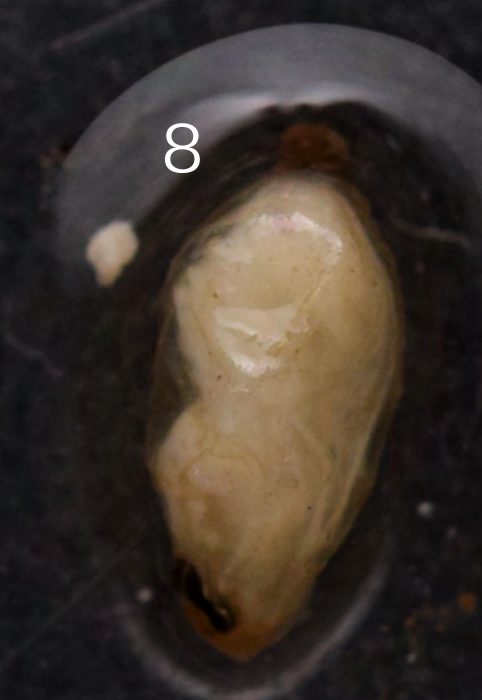
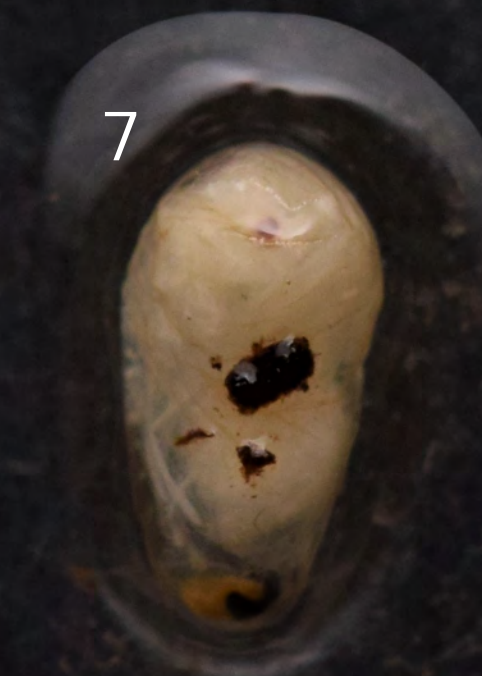
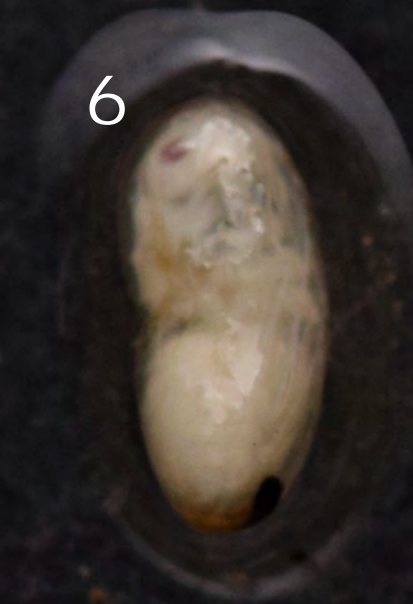
11

12



EB106 - camera accu was empty, taken with cell phone









1

2

3

4

5

6

7

8

6



7



8



9





1

2

3

4

5

6

7

8

9

10

11



1



2



3



4



5



6



7



8



1



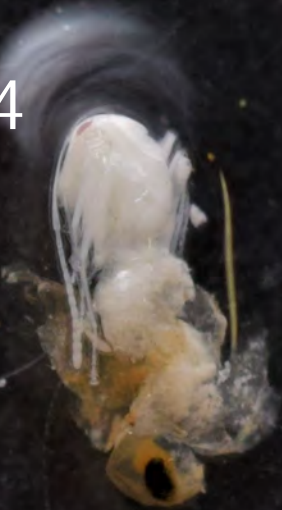
2



3



4



5



6



7



8



9



10



5



6



7



8



9



10



11



1



2



3



4



5



6



7



8



9



10



11



1



2





2

3

4

5

6

1



2



3



4



5



6



7



8



9



10



11



12



13



14



15



EB154

1



2



3



4



5



6



7



9



10



8



1



2



3



4



5



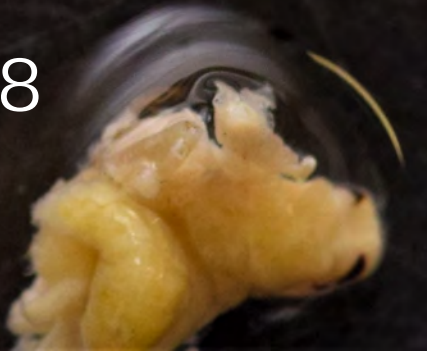
6



7



8





1



2



3



4



5



6



7



8



9



10



11



1



2



3



4



5



6



7



8



11



9



10



1



2



3



4



5



6



7



8



9



10



11



1



2



3



4



5



6



7



8



9



10



1



2



3



EB161_1

3



4



1



2



3



4



5



6



7



EB162

1



2



3



4



5



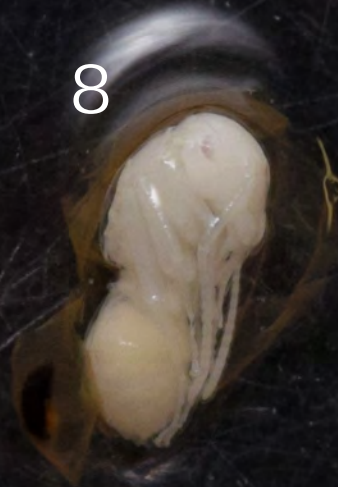
6



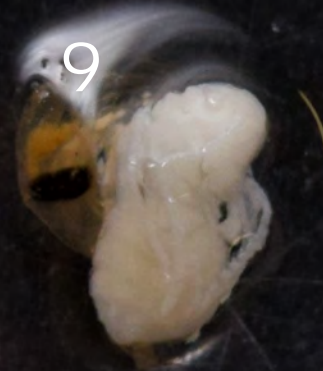
7



8



9



1



2



3



4



5



6



7



8



9



10



11



1



2



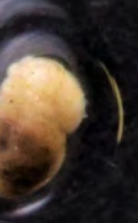
3



4



5



6



7



8

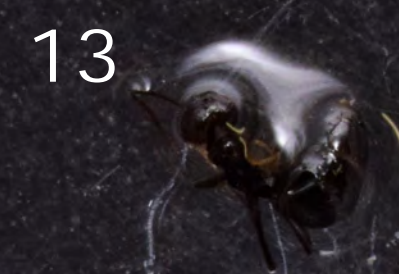
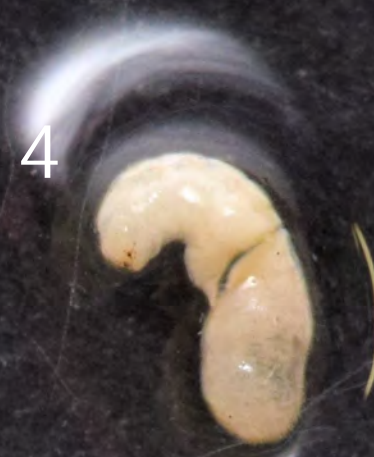


9



EB165





1



2



3



4



5



6



7



8



9



10



11



1



2



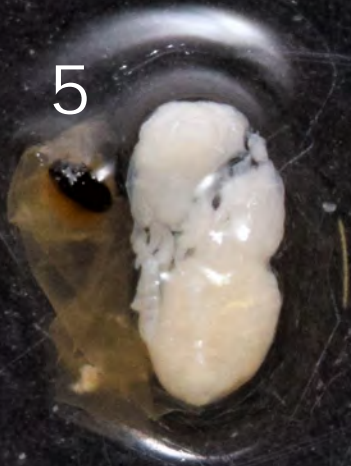
3



4



5



6



7



8



9



10



11





1

2

3

4

9

7

8

5

6

5



6



7



8



9



10



11



1



2



3



4



7



6



5



8



9



5



6



7



8



9



11



10



12



1



2



3



4



5



6



7



8



9





1



2



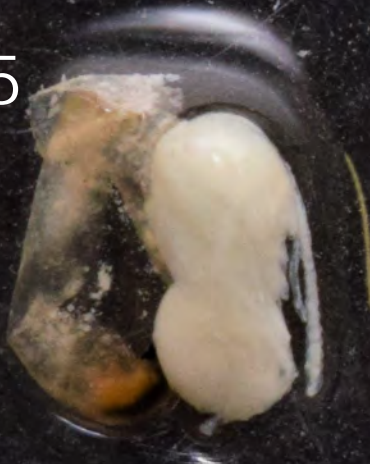
3



4



5



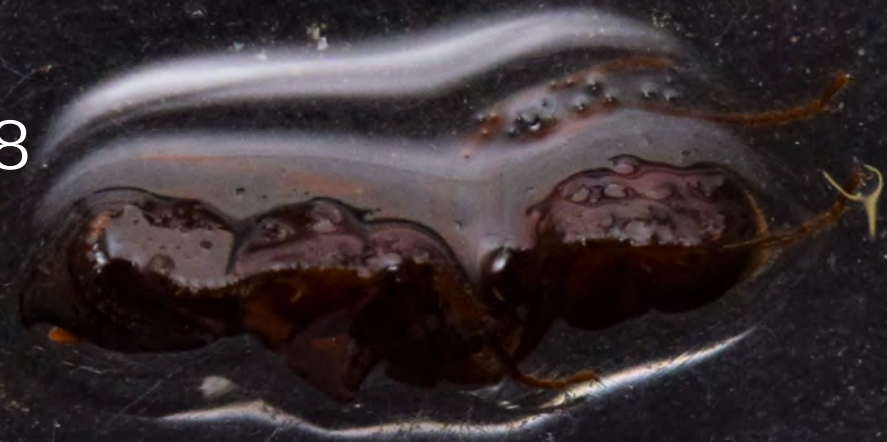
6



7



8





9



10



11



1

2

3

4

5

6

7

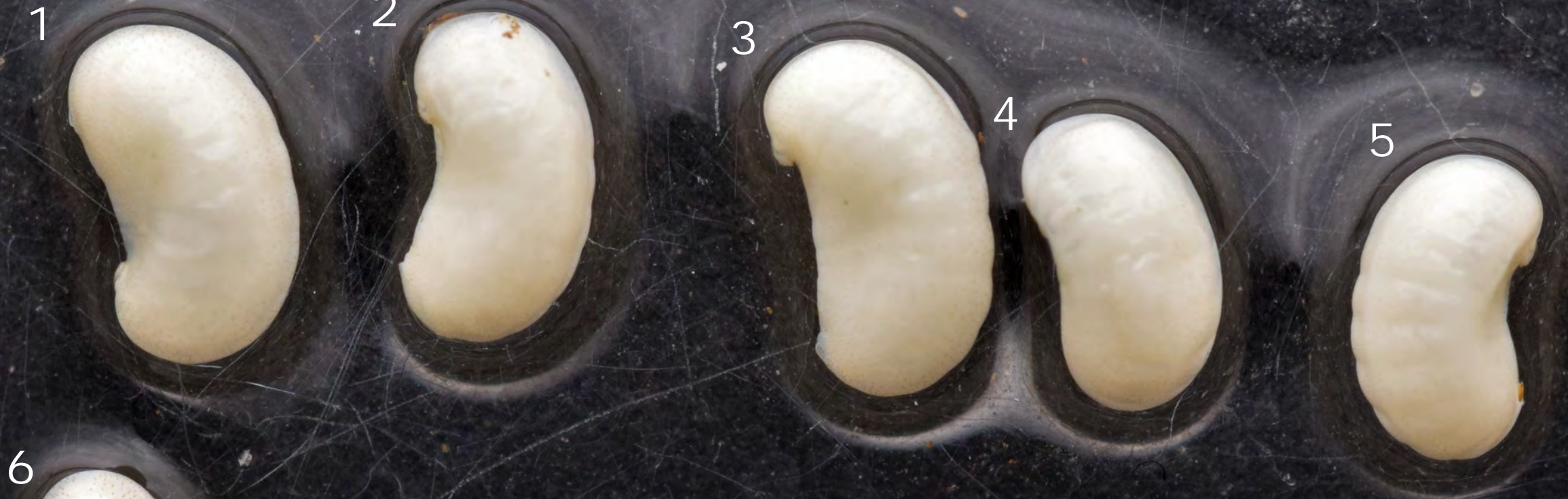
8

9

10

11

EH100





1

2

3

4

5

6

7

8

9

10

11

12

13

14

15

16

17

18

19

20

21

22

23

24

25

26

27

28

29

30

31

32

33

34

35

36

37

38

39

40

41

42



1



2



3



4



5



6



7



1



2



3



4



5



6



7



8



9



10



11



12



13



14



1



2



3



4



5



6



7



8



9



10



11



12



13



14



15



16



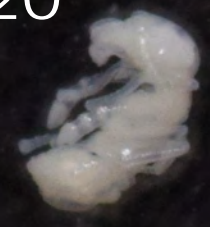
17



18



20



21



22



23



24



19



25



27



28



26



29

30



1



2



3



4



5



6



7



8



9



10



11



12



13



14



15



16





1

2

3

4

5

6

7

8

9

10

11

12

13

14

15

16

17

18

19

20

1



2



3



4



5



6



7



8



9



10



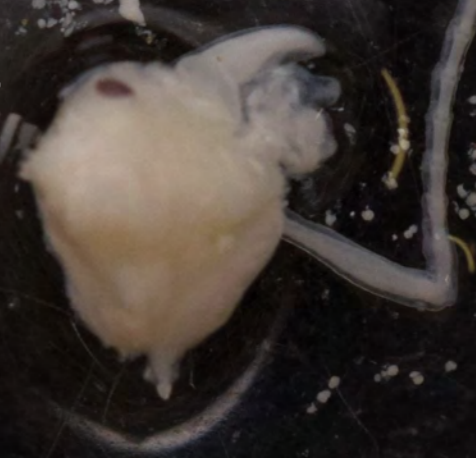
1



2



3



4



5



6



7





4

5

6

7

8

9

1



2



3



4



5



6



7



8











1



2



3



4



5



6



7



8



9



10



11



12



13



14



15



1



2



3



4



5



6



7



8



9



10



11



12





1



2



3



4



5



6



7



8



9



10



11



12



13

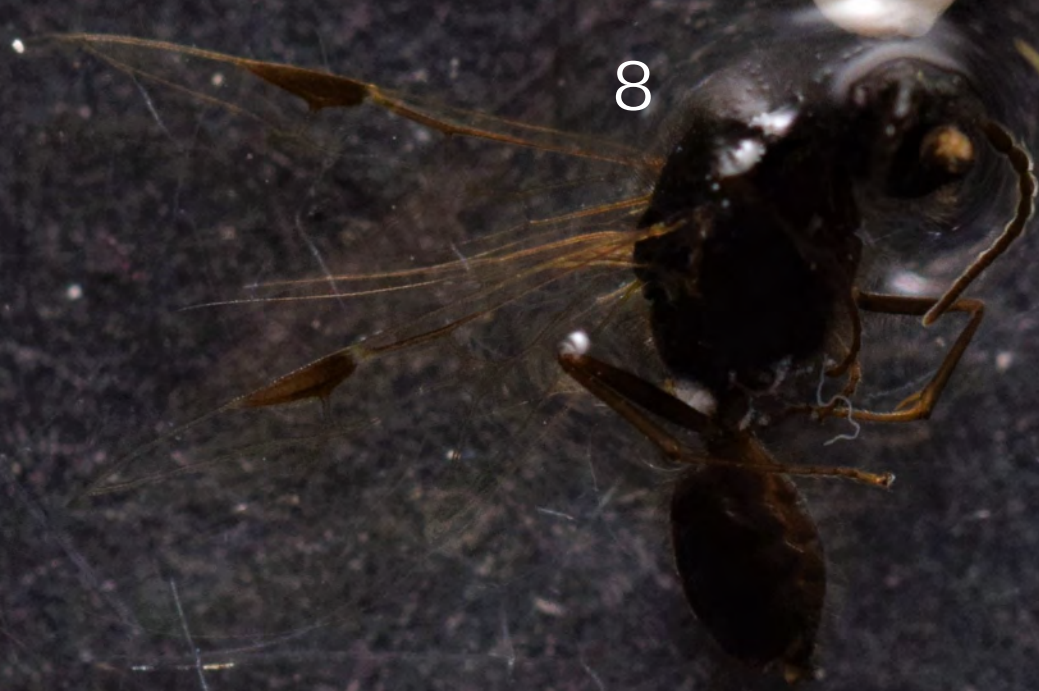


14



15





1



2



3



4



5



6



7



8



1



2



3



4



5



6



7



8



9



1



2



3



4



5



6



7



8



9



10



11



12



1



2



3



4



5



6



7



8



9



10



11



12



13





1



2



3



4



5



6



7



8



9



10







1



2



3



4



5



6



7



8



9



10



11



12



1



2



3



4



5



6



7



8



9



10



11



12

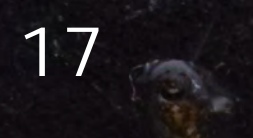


13



14









1



2



3



4



5



6



7



8



9



10



11



12



13



14



15



EH169b









14

15

16





1 - 20



21 - 37



38



39



40



41



42



43



44



45



46



47



48



49





EH1000



1



2



3



4



5



6



7



8



9



10

EH1001



1



2



3



4



9



5



6



7



8

1



2



3



4



5



6



7



8



5



6



7



8



9



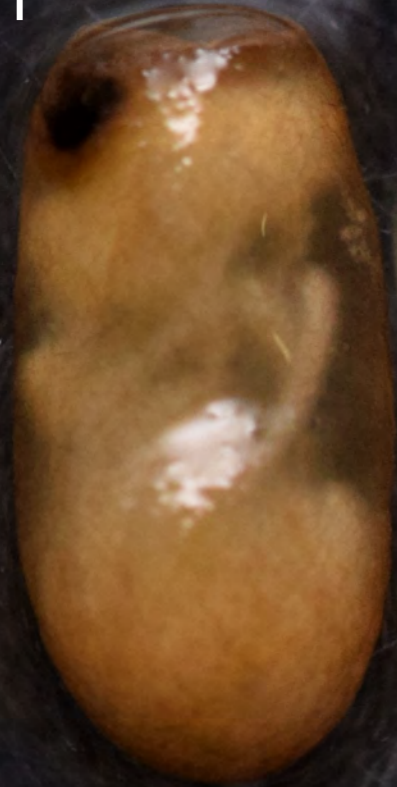
10



11



1



2



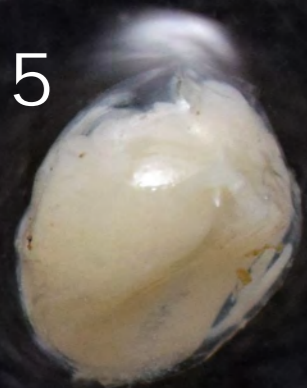
3



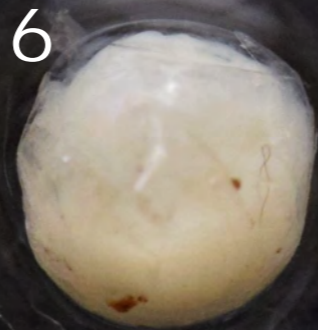
4



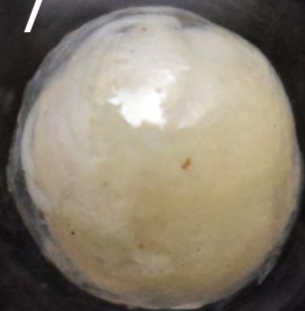
5



6



7



1



2



3



4



5



6



7



8



9



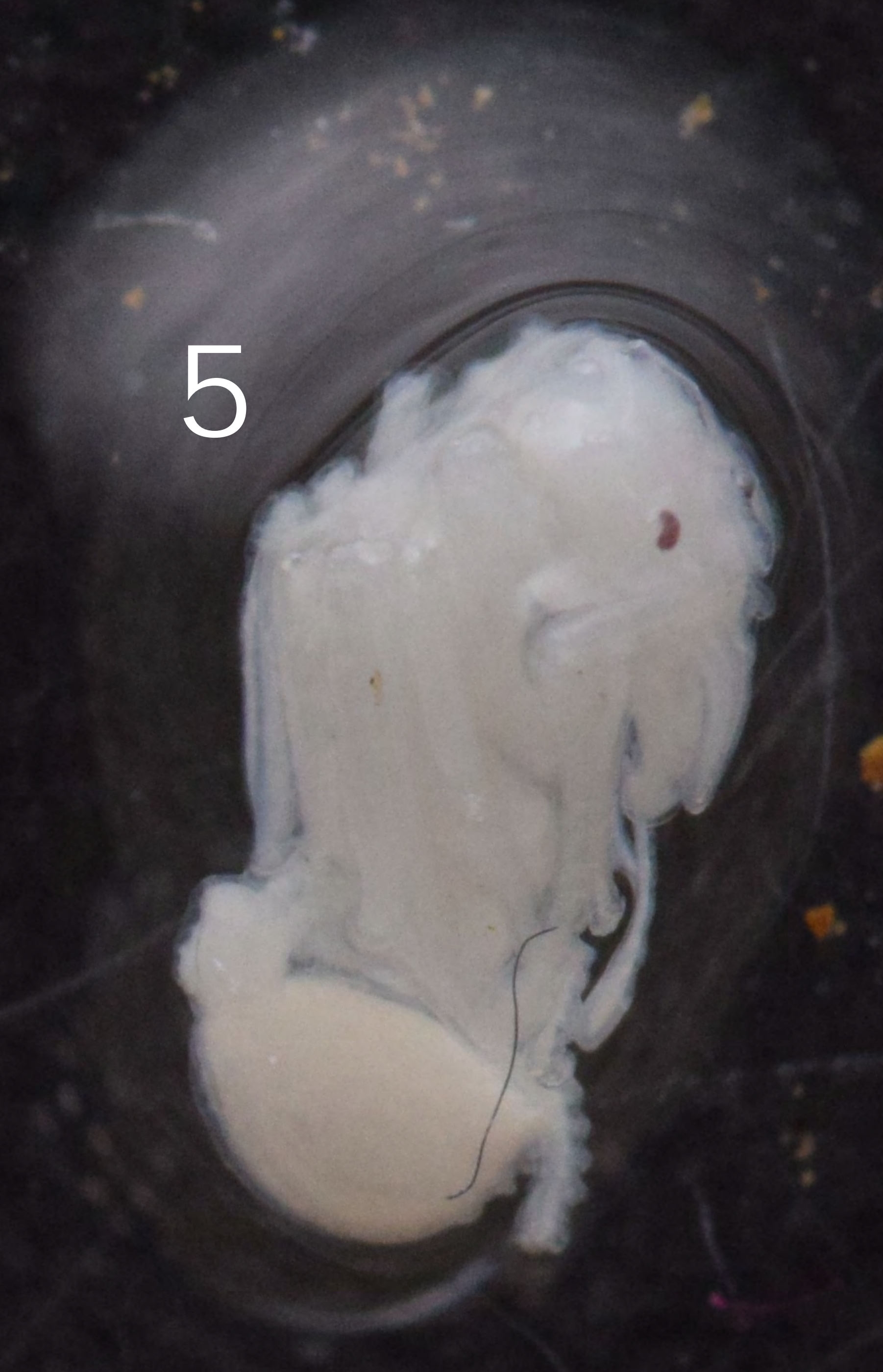
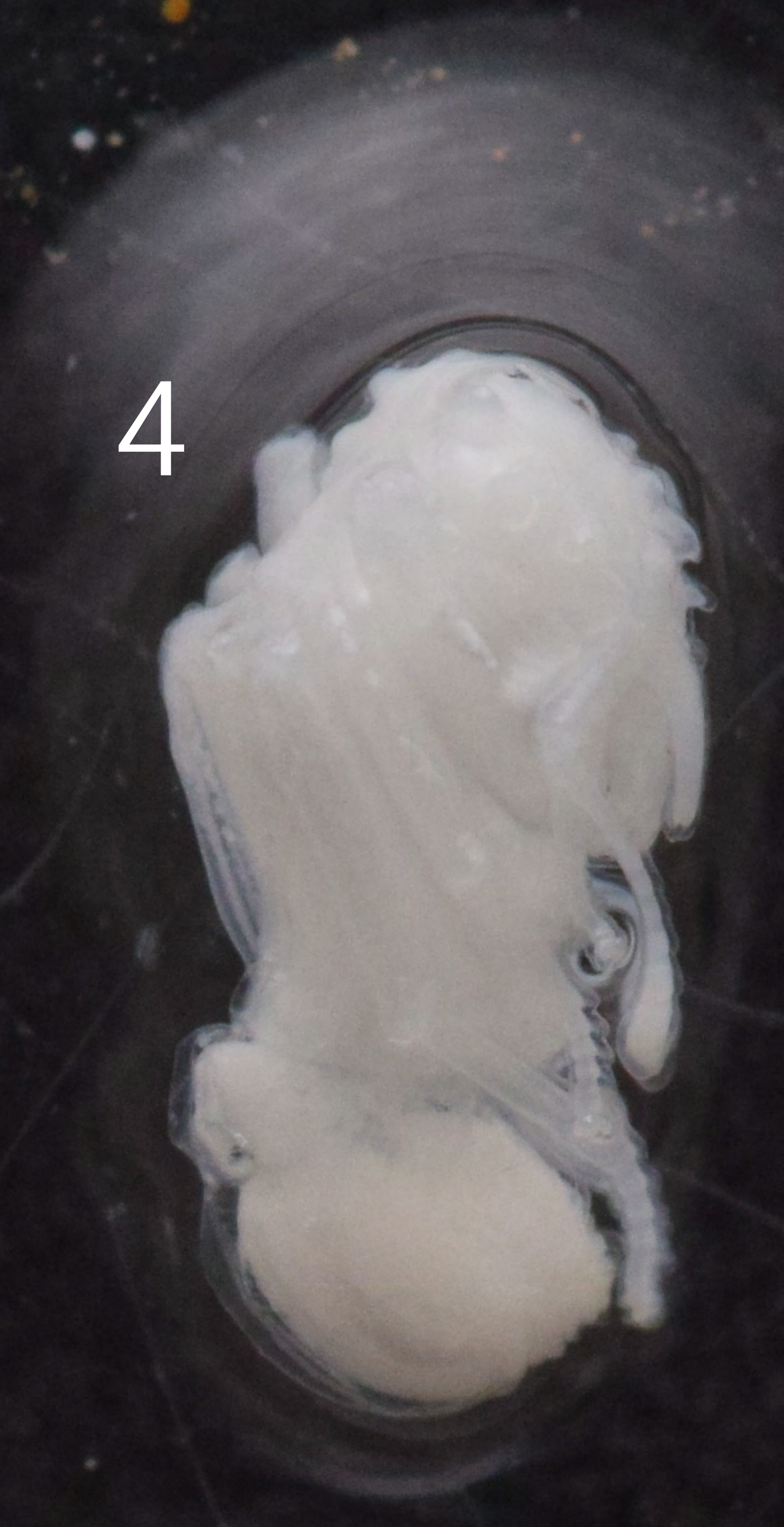
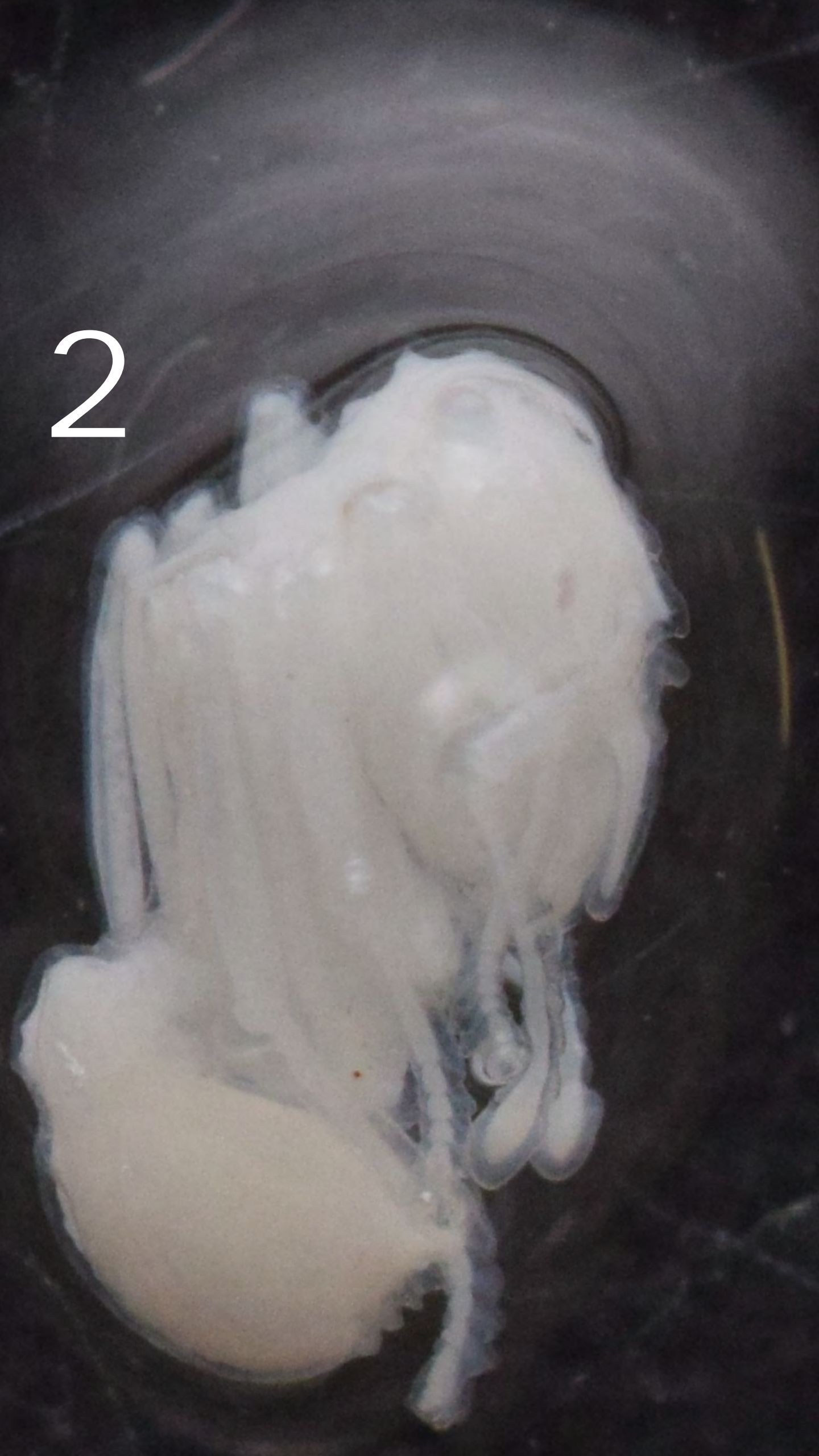
10



11









1

2

3

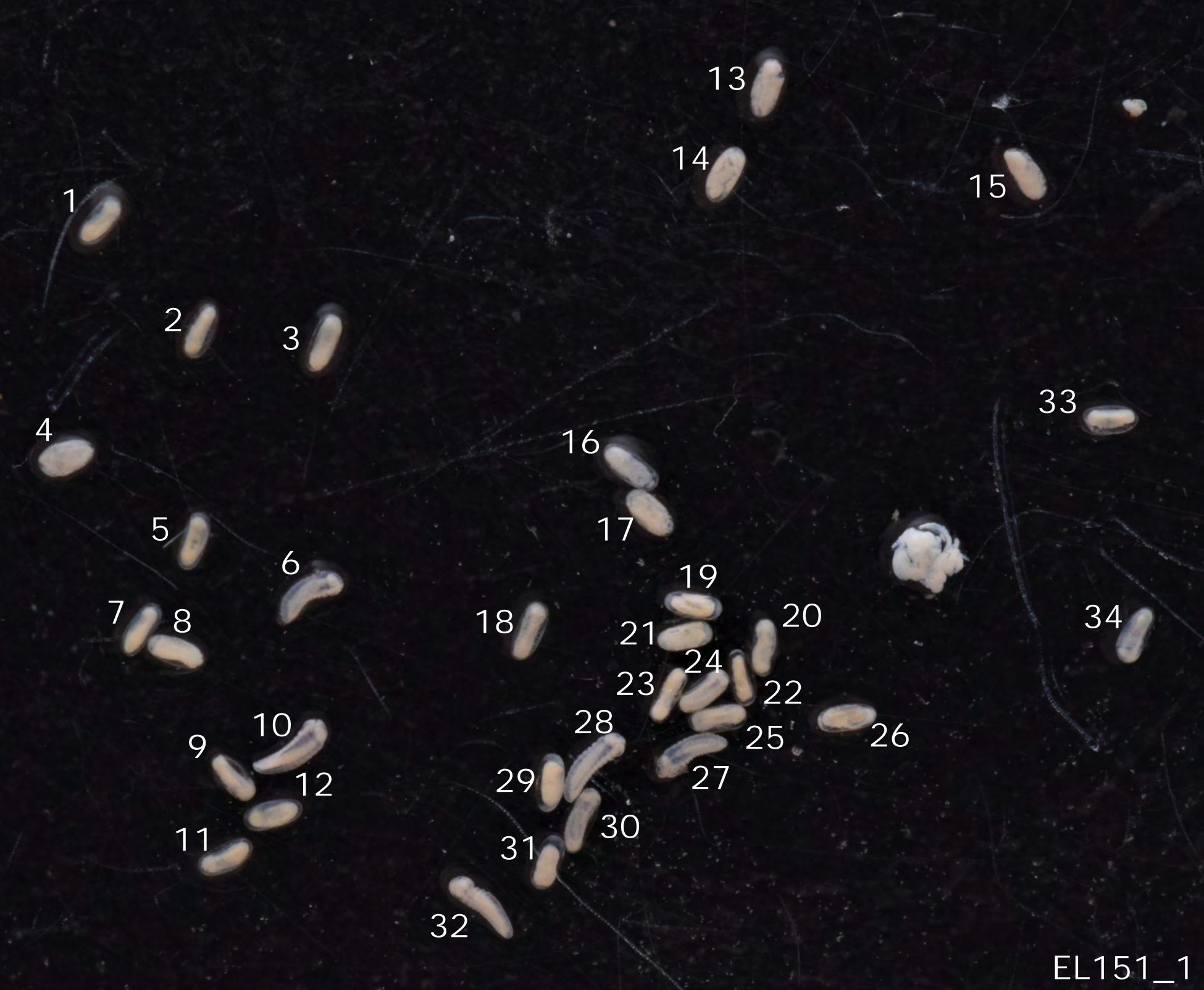
4

5

6

7

8



35



36



37



38





1

2

3

4

5

7

6

8

9

10

1

2

3

4

5

6

7

8

9

10

11

12

13

14

15



1

2

3

4

5

6

7

8

9

10

11

12

1



2



3



4



5



6



7



1



2



3



4



5



10



9



8



7



6



11



1

2

3

4

5

6

7

8



1



2



3



4



5



6



7



8



9



10



1



2



3



4



5



6



7



8



9



10



11



1



2



3



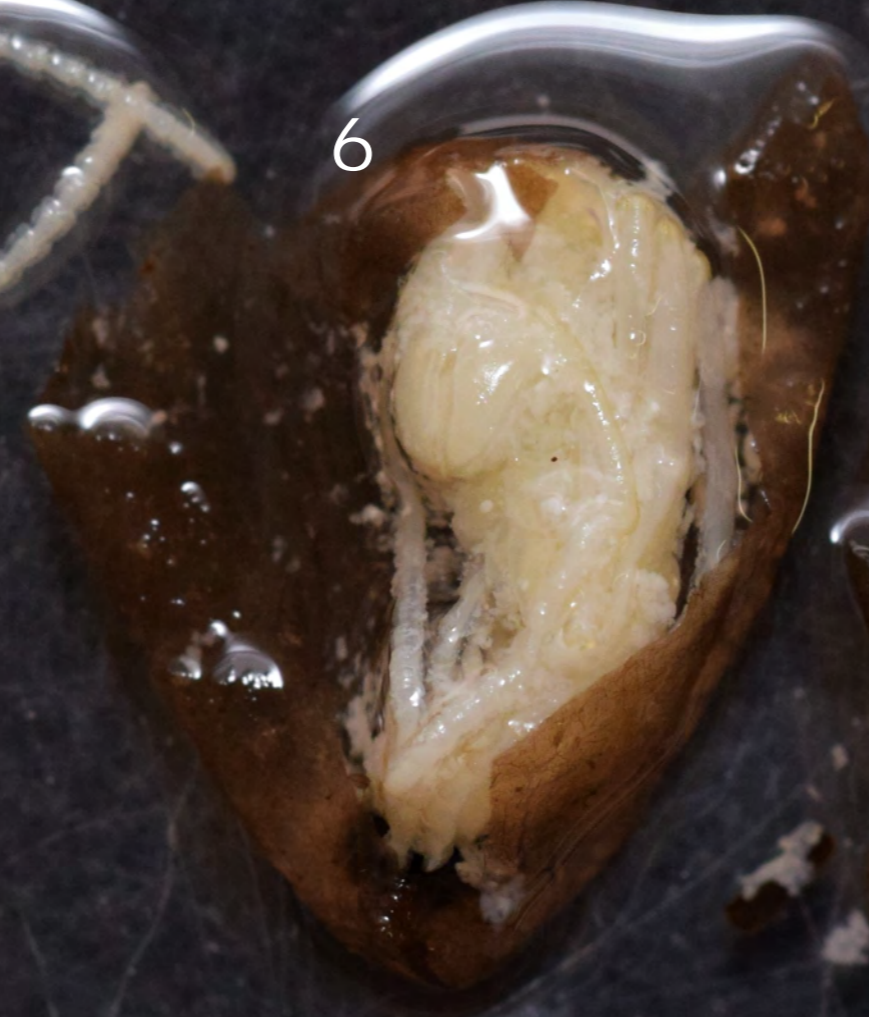
4



5



6



7



8





1

2

3

4

5

6

7

8

9

10



1

2

3

4

5

6

8

9

10

11

12

7

14

15

16

17

13

18

EM151





5

6

7

8

9

10

11

12



1

2

3

4

5

6

7

8

9

10

11

EM153



1

2

3

4

8

5

6

7

9



1

2

3

4



Tetradonia beetle
no prey but myrmecophile in raids

5



6



7



8



9



10



11



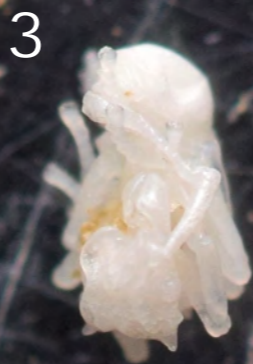
12





8





6

7

8

9



10



11

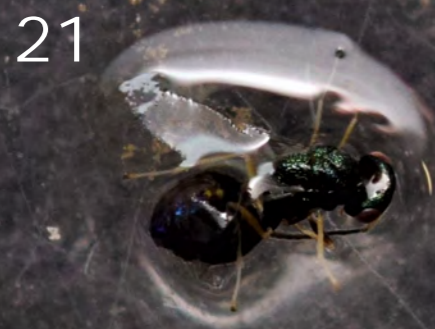


12



13







1

2

3

4

5

6

7

8

9

10

11

12

13

14

15

16





1

2

4

3

5

6

7

8

9

10

11

1



2



3



4



5



6



7



8



9



10





1

2

3

4

5

6

7

8

9

10

11

EV152



1

2

3

4

5

7

6

8

9

10

11

12

13

14

15

16

17

18

EV155



1

2

3

4

5

6

7

8

9

10



1

2

3

4

5

6

7

8

9

10

11

12

EV157





1



2



3



4



5



6



7



8



9



10



11



12



13







EV1000



EV1001(2)



1



2



3

4



5



6



7



8

EV1001



EV1003



1



2



3



4



5



6



7



8



9



10



11



12



13



1



2



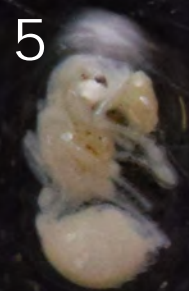
3



4



5



6



7



8



LA101







1

2

3

4

5

6

7

8

9

1



2



3



4



5



6



7



8



9



1



2



3



4



1



2



3



4



5

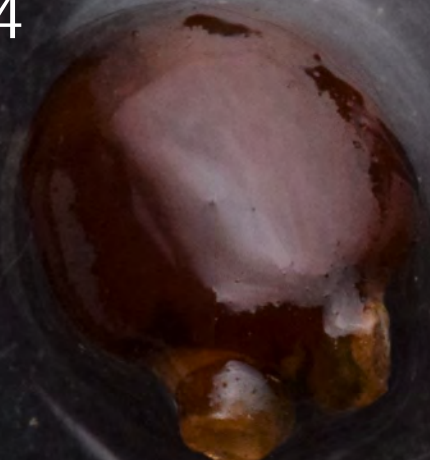
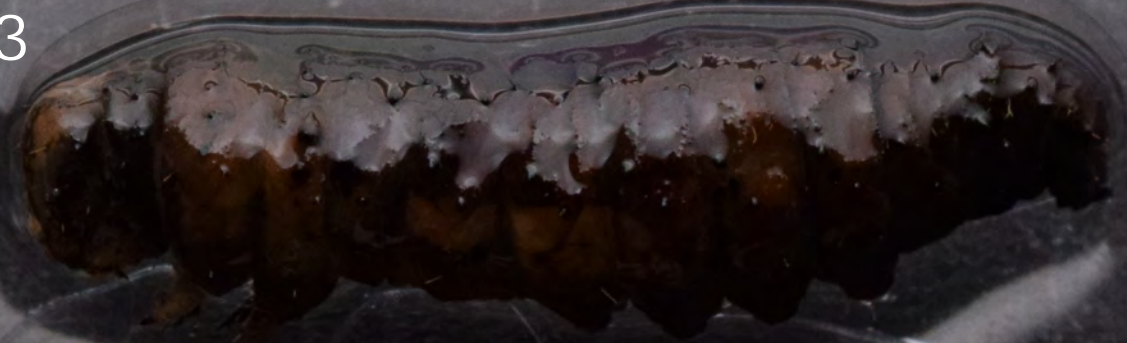


LA152(A)

6



LA152(B)





1

2

3

4

5

6

8

7

9

10

11

12

13

14

15

16

17

18

1



2



3



4



8



5



6



7



1



2



3



4



5



6



7



8



9



10



11



12



13



13



6



7



8



9



10



11



12



13



14



1



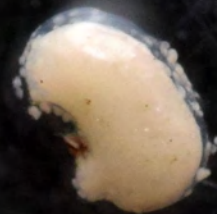
2



3



4



5



6



7



8



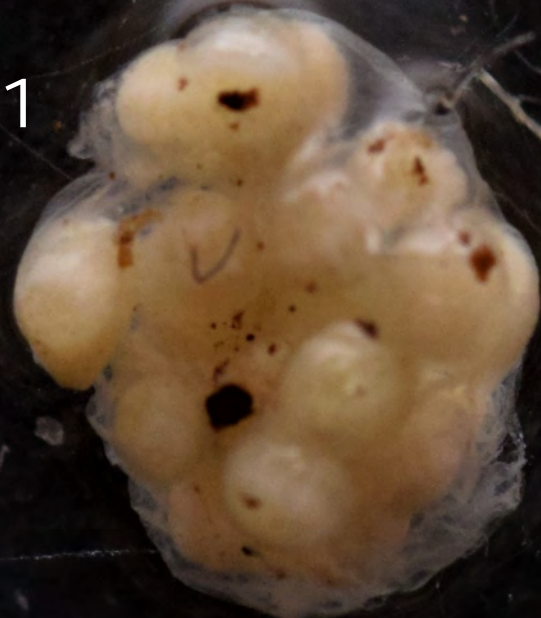
9



10



11



LA1000



1



2



3

4

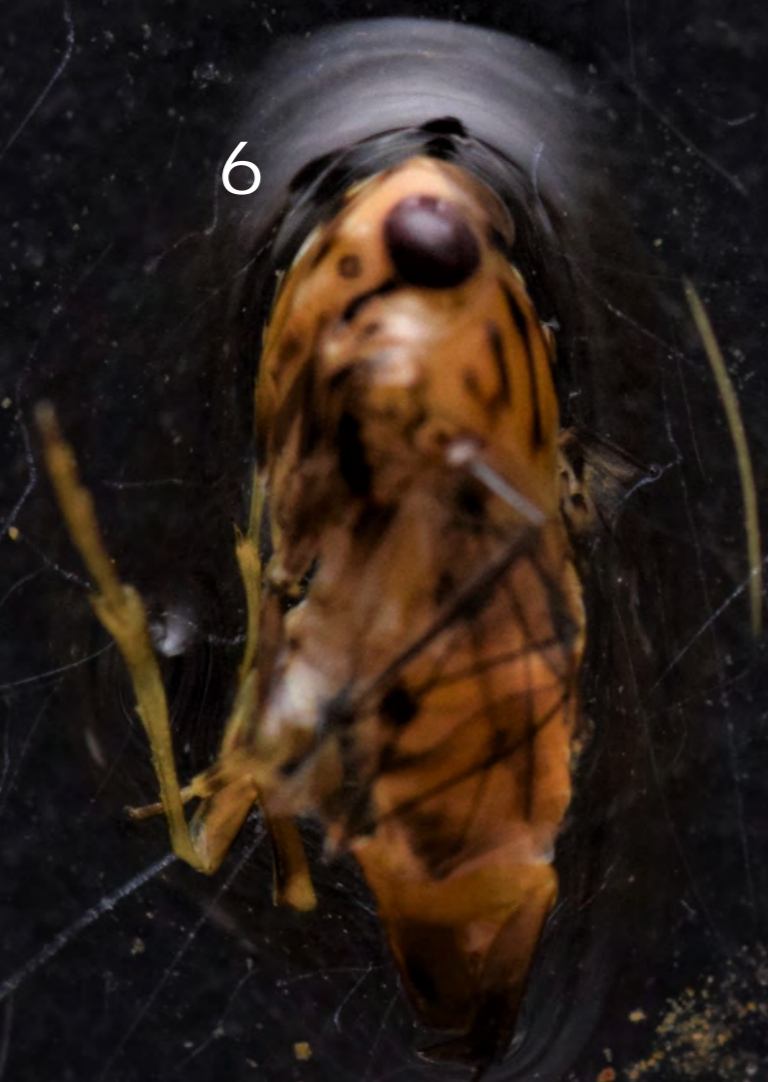
5

6

7

8

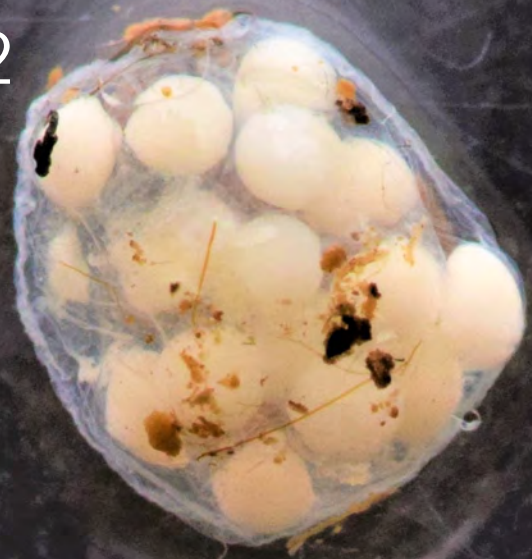
9



1



2



3



4



1



2



3



4



5



6



7



8



4



5



6



7



8



9



1



2



3



4



5



6



7



8



1



2



3



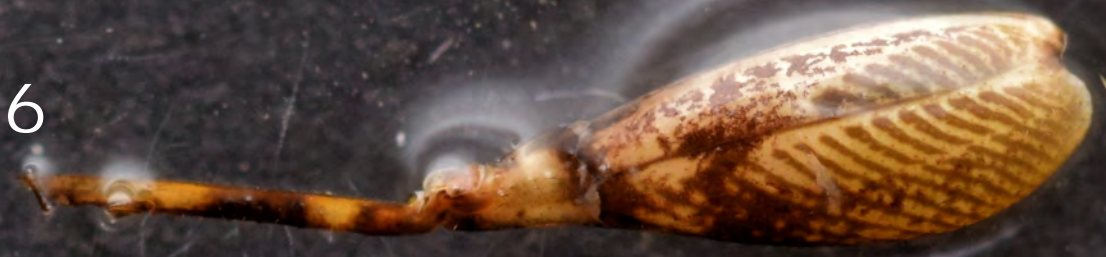
4



5



6



7



8



9



10



1



2



3



4



5





1

2

3

4

5

6

7

8

9

10

11

12

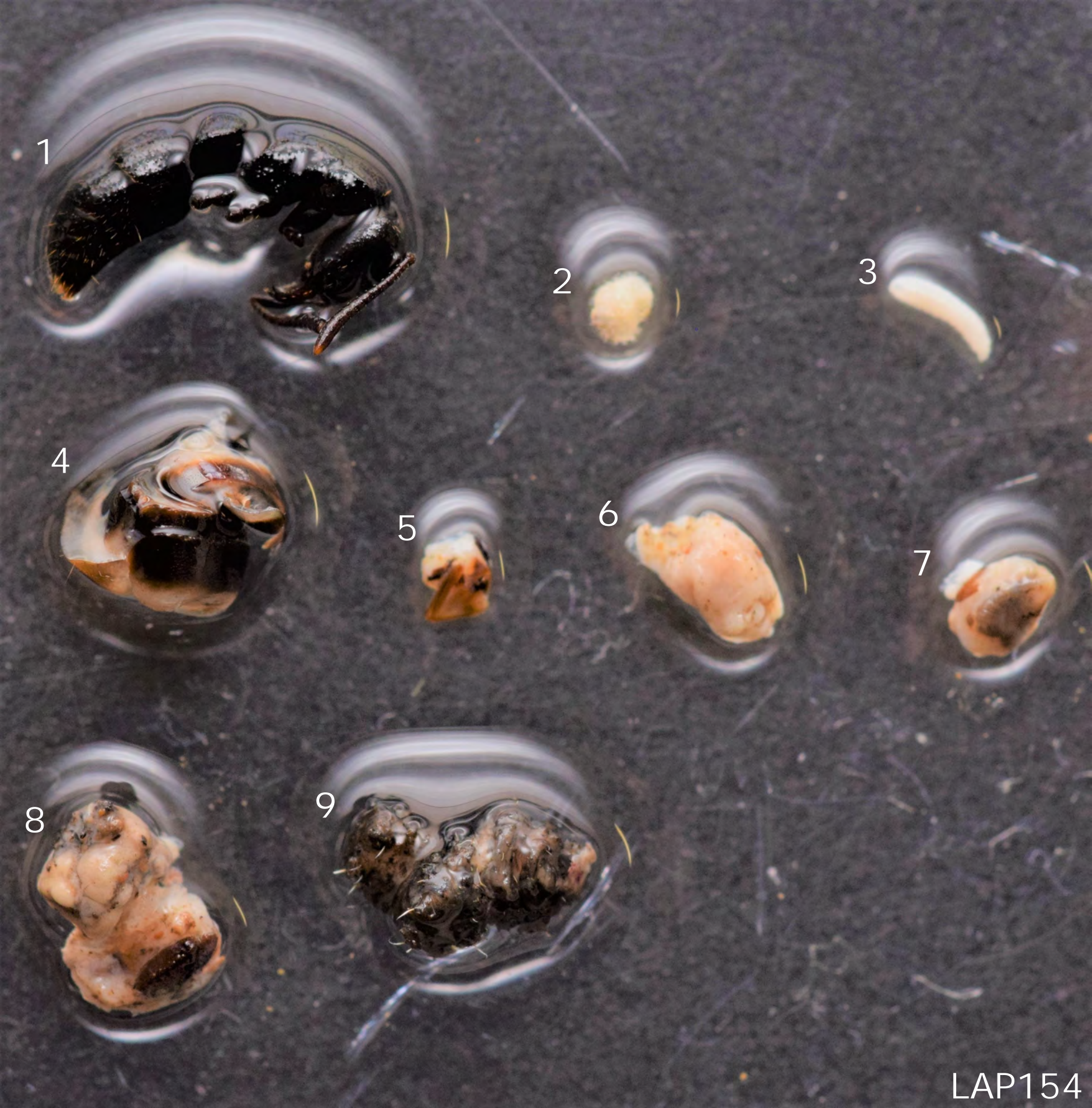
13

14

15

16

LAP153



1

2

3

4

5

6

7

8

9







1

2

3

4

5

6

7

8



LAP158

LAP1000



1



2



3



4



5



6



7



8



9



10



NEIVA1001(2)



1



2

3

4

5



6

7



8



9



10



1



2



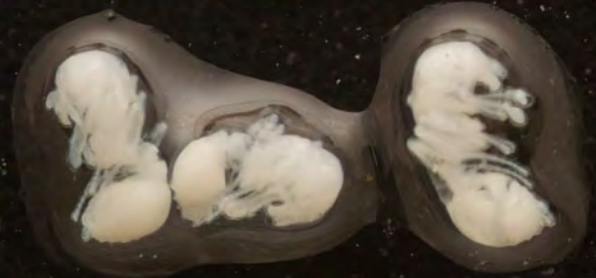
3



4



5



6



7

8



9

10

11

12

13



NEIVG1001(2)



1

2

3

4

5

6

7

8

9

10

11

12

13

NEIVG1001



NEIVG1002



1

2

3

4

5



6

7

8

9

NEIVG1003



1



2

3

4

5

6

7

8



9



10

11

12

NEIVG1004



1



2



3



4



5



6



7



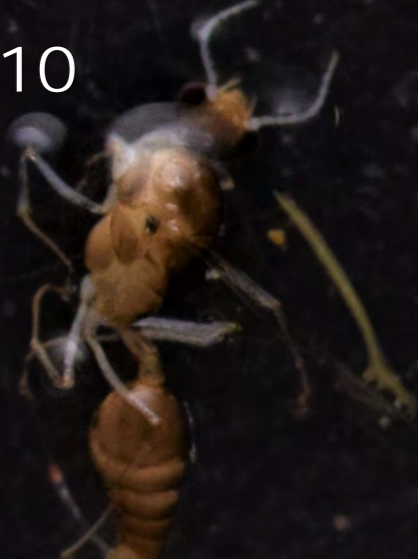
8



9



10



NEIVU1000(2)



1



2

3

4



5

6

7

8

9

10



2

3

4

5



6

7

8

9

10

1

2

3

4

5

6

7

8

9

10

11



1



2



3



4



5



6



7



8



9



10



NG100



1

2

3

4

5

6

7

8

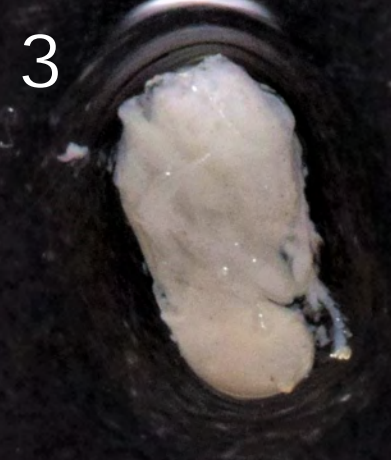
9

10

11

12

NG101









1



2



3



4



5



6



7

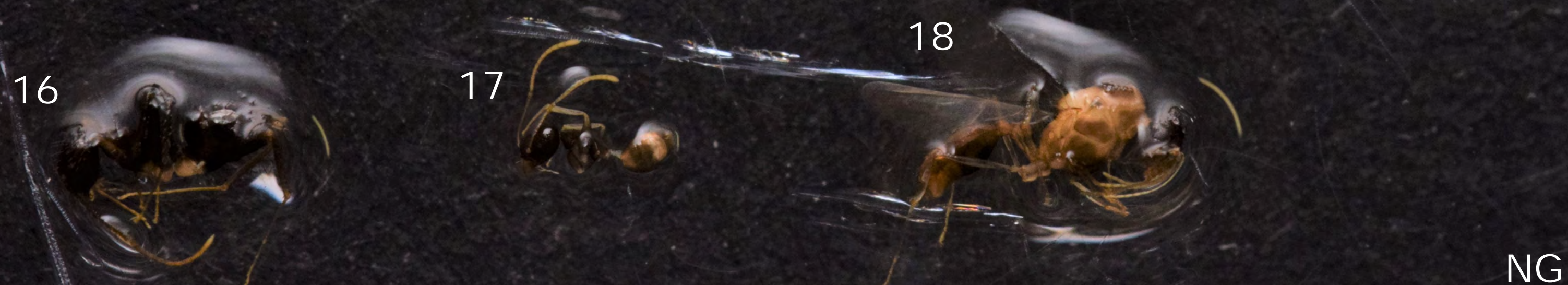


8



NG154







1



2



3



4



5



6



7



8



9



10



11





NO100

1



2



3



4



5



6



7



8



9



10



NO1000

