

# ADVANCED MATERIALS

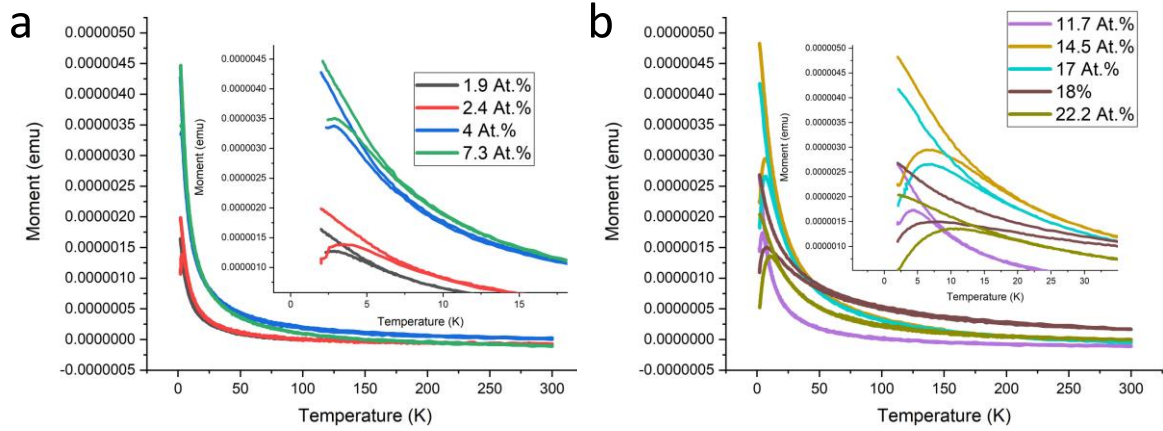
## Supporting Information

for *Adv. Mater.*, DOI: 10.1002/adma.202208774

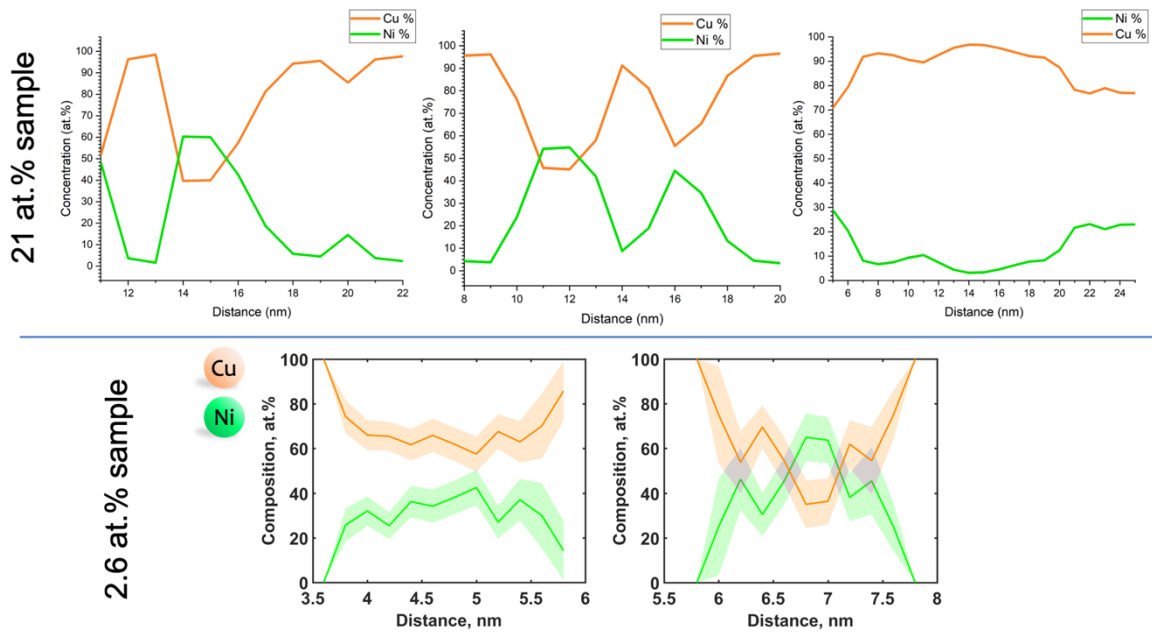
A New Class of Cluster–Matrix Nanocomposite Made of Fully Miscible Components

*Gleb Iankevich,\* Abhishek Sarkar, Shyam Katnagallu, Mohammed Reda Chellali, Di Wang, Leonardo Velasco, Ruby Singh, Thomas Reisinger, Robert Kruk,\* and Horst Hahn*

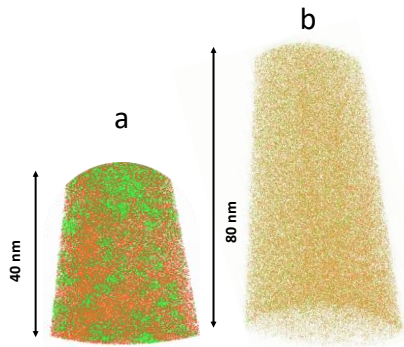
# Supplementary materials



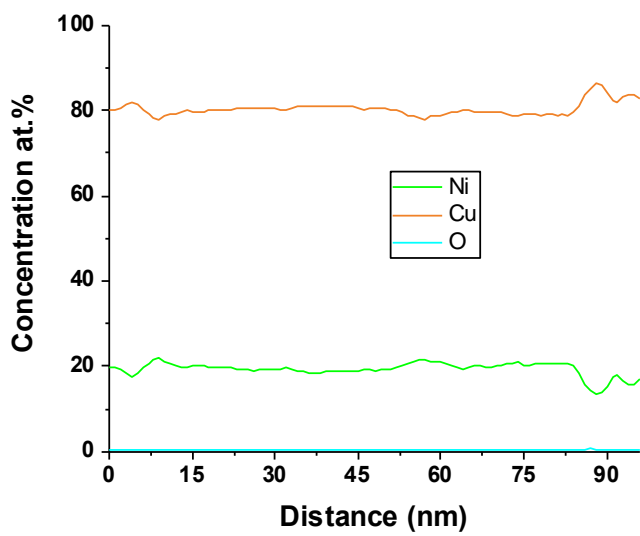
S1. Raw data of all ZFC/FC measured curves, a) 1.9 At.% - 7.3 At.%, b) 11 At.% - 22.2 At.%



S2. Samples composition profiles.



S3. APT data of annealed samples after a) 275°C and b) 450°C.



S4. Sample composition profile after annealing at 450°C