



Supporting Information

Multi-Tier Electronic Structure Analysis of Sita's Mo and W Complexes Capable of Thermal or Photochemical N₂ Splitting

Severine Rupp, Felix Plasser* and Vera Krewald*

Table of Contents

Table S2. Additional computed Mayer bond orders	p.2
Figure S1. Selected molecular orbitals for Mo ^{therm}	p.3
Figure S2. Selected molecular orbitals for Mo ^{photo}	p.4
Figure S3. Selected molecular orbitals for W ^{therm}	p.5
Figure S4. Selected molecular orbitals for Mo ^{photo}	p.6
Figure S5. MO diagram for all complexes	p.7
Table S2. Assignment of transitions mentioned in the main text	p.8
Table S6. State character according to the BLYP density functional	p.10
Table S7. State character according to the B3LYP density functional	p.11
Cartesian coordinates of all four complexes	p.12

Note:

A repository with the TheoDORE descriptors and Ω -matrices as text for all complexes discussed in the main text is also available.

[a] M. Sc. Severine Rupp, Prof. Dr. Vera Krewald
Fachbereich Chemie, Theoretische Chemie
Technische Universität Darmstadt
Alarich-Weiss-Str. 4, 64287 Darmstadt, Germany
E-mail: krewald@chemie.tu-darmstadt.de
Homepage:

[b] Dr. Felix Plasser
Department of Chemistry
Loughborough University
Loughborough, LE11 3TU, United Kingdom

Table S1. Computed Mayer bond orders of the four complexes Mo^{therm} , Mo^{photo} , W^{therm} and W^{photo} with different density functionals

		Mo^{therm}	Mo^{photo}	W^{therm}	W^{photo}
<i>LC-BLYP</i>	<i>B.O.(M1, M2)</i>	0.22	0.23	0.19	0.20
	<i>B.O.(N1, N2)</i>	1.40	1.36	0.67	0.67
	<i>B.O.(M1, N1)</i>	1.56	1.56	2.00	2.00
	<i>B.O.(M2, N2)</i>	1.56	1.56	2.00	2.00
<i>CAM-B3LYP</i>	<i>B.O.(M1, M2)</i>	0.24	0.25	0.21	0.21
	<i>B.O.(N1, N2)</i>	1.45	1.42	0.71	0.72
	<i>B.O.(M1, N1)</i>	1.46	1.47	1.93	1.92
	<i>B.O.(M2, N2)</i>	1.46	1.47	1.93	1.92
<i>B3LYP</i>	<i>B.O.(M1, M2)</i>	0.28	0.29	0.24	0.25
	<i>B.O.(N1, N2)</i>	1.55	1.51	0.79	0.80
	<i>B.O.(M1, N1)</i>	1.37	1.39	1.85	1.85
	<i>B.O.(M2, N2)</i>	1.37	1.38	1.85	1.85
<i>BLYP</i>	<i>B.O.(M1, M2)</i>	0.30	0.32	0.26	0.27
	<i>B.O.(N1, N2)</i>	1.61	1.58	0.84	0.86
	<i>B.O.(M1, N1)</i>	1.36	1.37	1.82	1.82
	<i>B.O.(M2, N2)</i>	1.36	1.37	1.82	1.82
<i>PBE0</i>	<i>B.O.(M1, M2)</i>	0.28	0.30	0.24	0.25
	<i>B.O.(N1, N2)</i>	1.58	1.53	0.84	0.84
	<i>B.O.(M1, N1)</i>	1.41	1.42	1.87	1.88
	<i>B.O.(M2, N2)</i>	1.41	1.43	1.87	1.88
<i>PBE</i>	<i>B.O.(M1, M2)</i>	0.31	0.33	0.27	0.27
	<i>B.O.(N1, N2)</i>	1.66	1.62	0.91	0.92
	<i>B.O.(M1, N1)</i>	1.39	1.40	1.83	1.84
	<i>B.O.(M2, N2)</i>	1.39	1.40	1.83	1.84

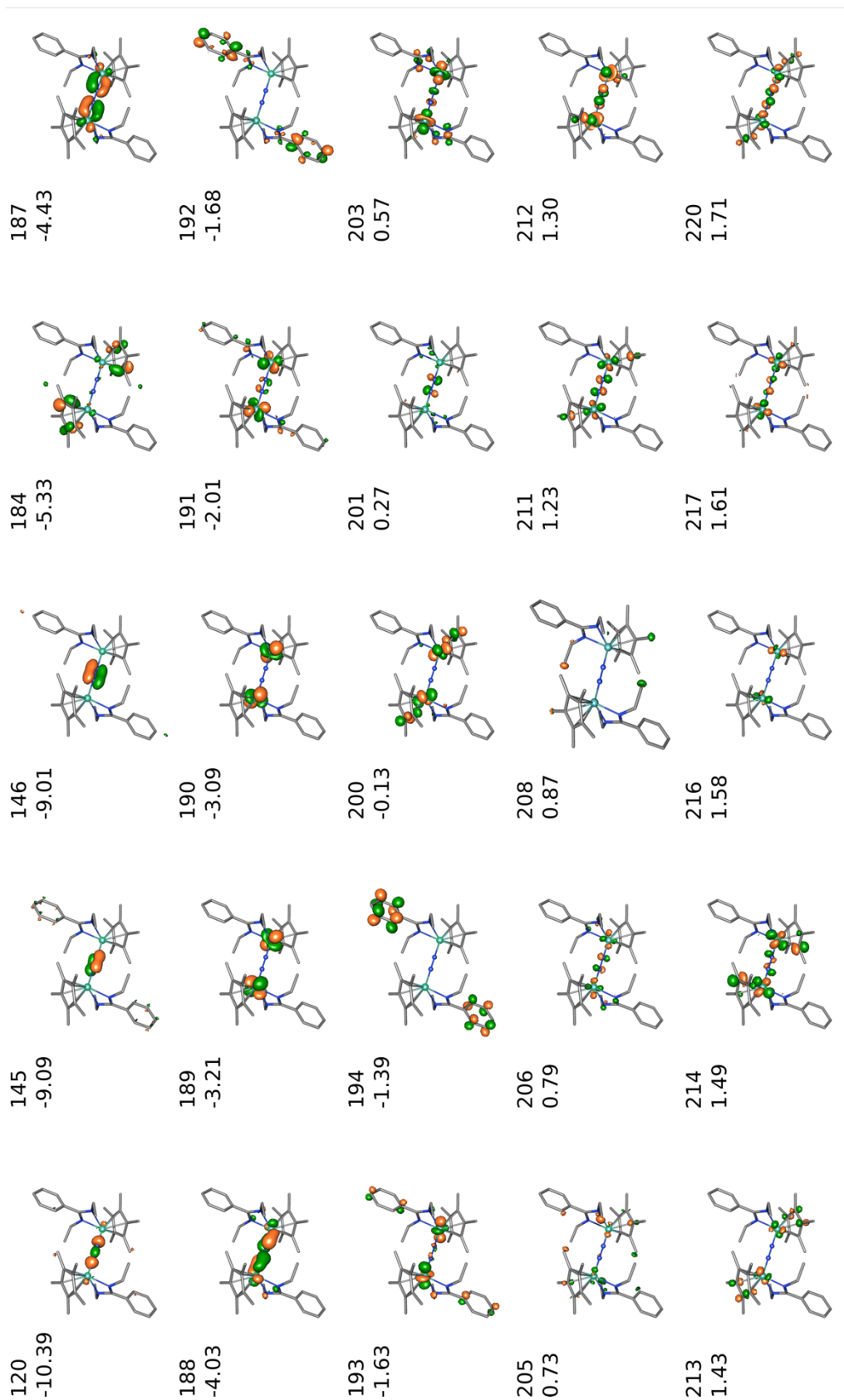


Figure S1. Selected molecular orbitals of Mo^{therm} plotted with a contour value of 0.065 (201, 203, 205, 214 plotted with a contour value of 0.055). The energies are given in eV.

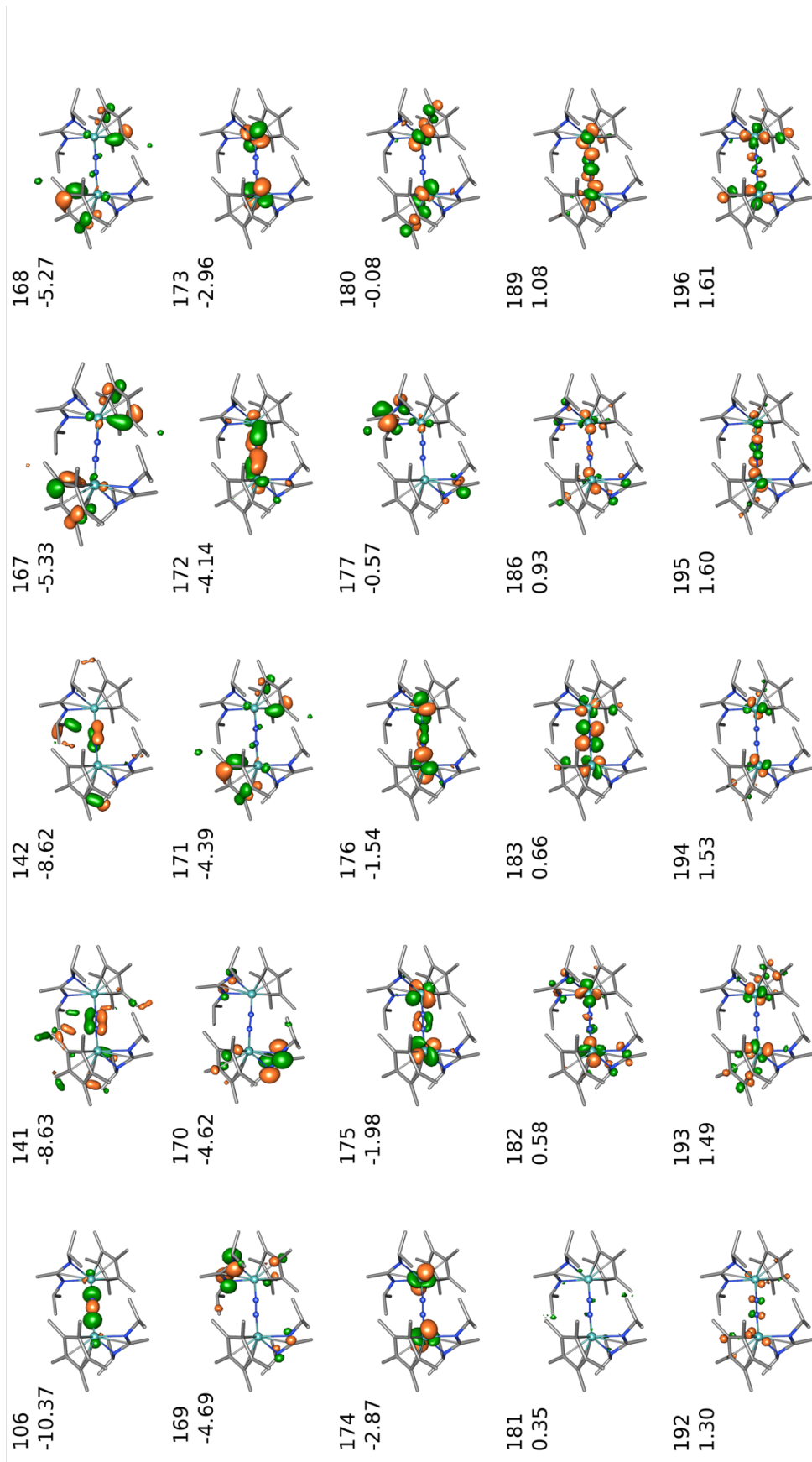


Figure S2. Selected molecular orbitals of Mo^{photo} plotted with a contour value of 0.065 (181, 182, 186, 196 plotted with a contour value of 0.055). The energies are given in eV.

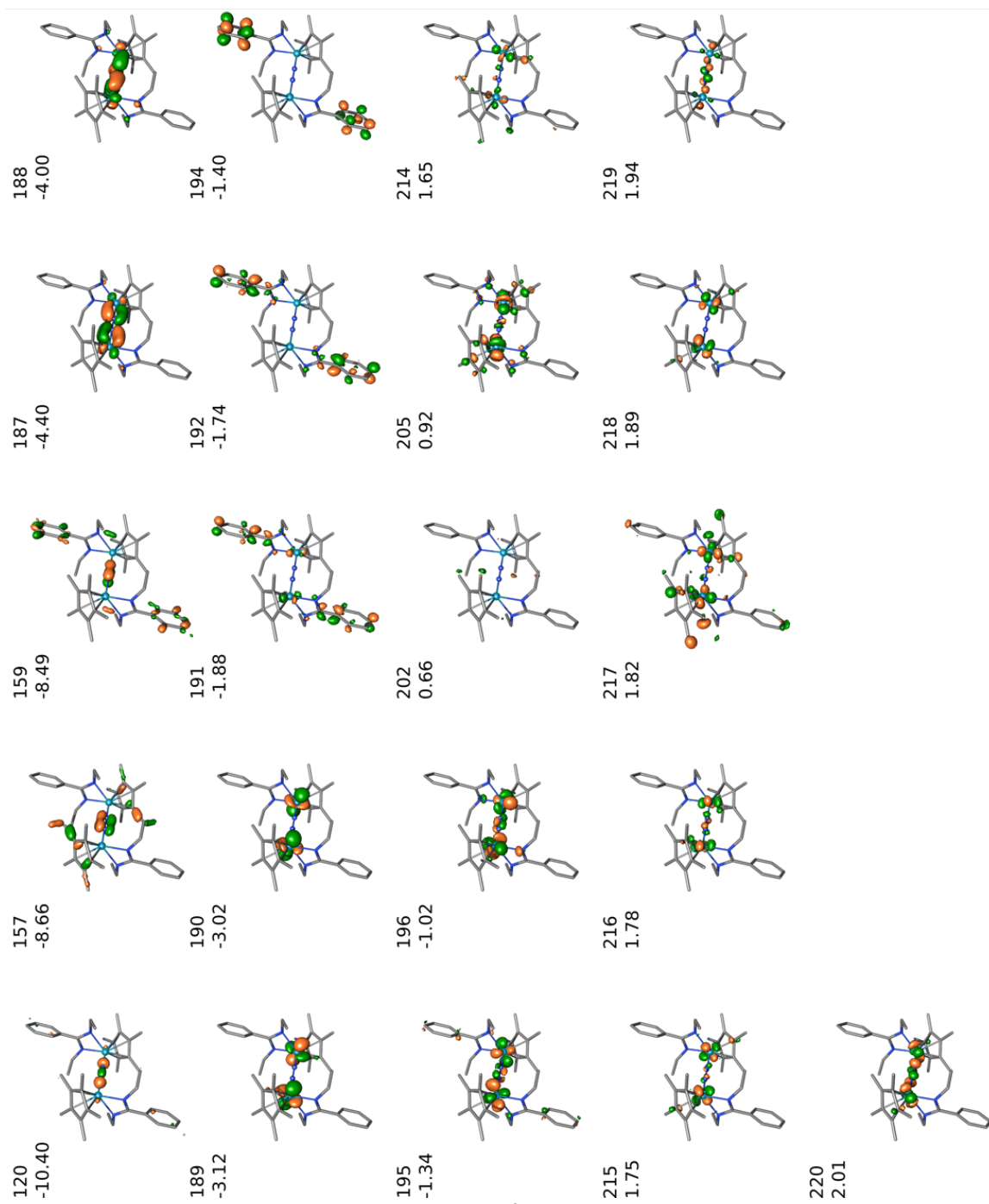


Figure S3. Selected molecular orbitals of W^{therm} plotted with a contour value of 0.065 (202, 205, 214, 217 plotted with a contour value of 0.055). The energies are given in eV.

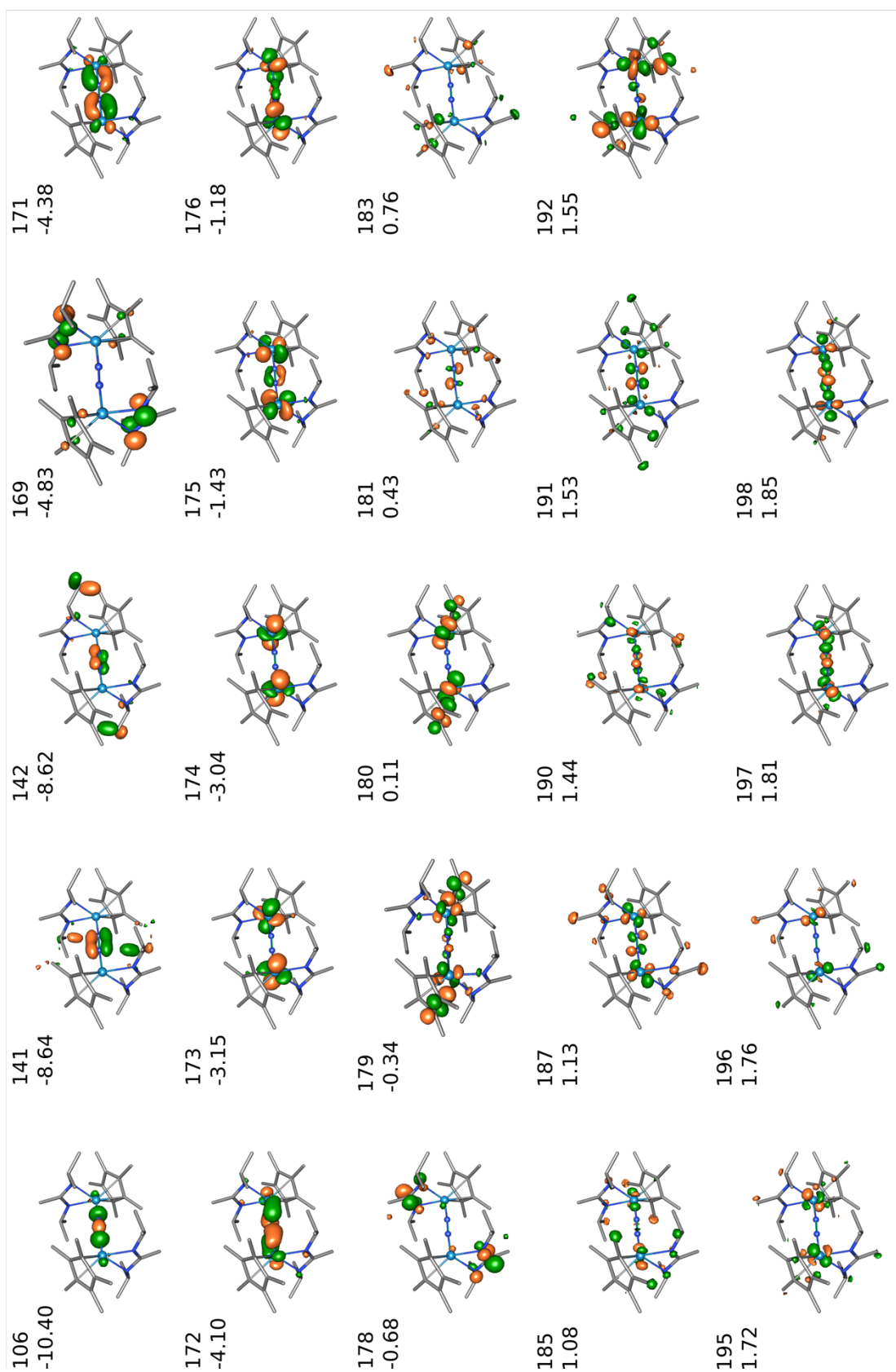


Figure S4. Selected molecular orbitals of W^{photo} plotted with a contour value of 0.065 (181, 183, 185, 187, 190, 191, 192, 195, 196 plotted with a contour value of 0.050). The energies are given in eV.

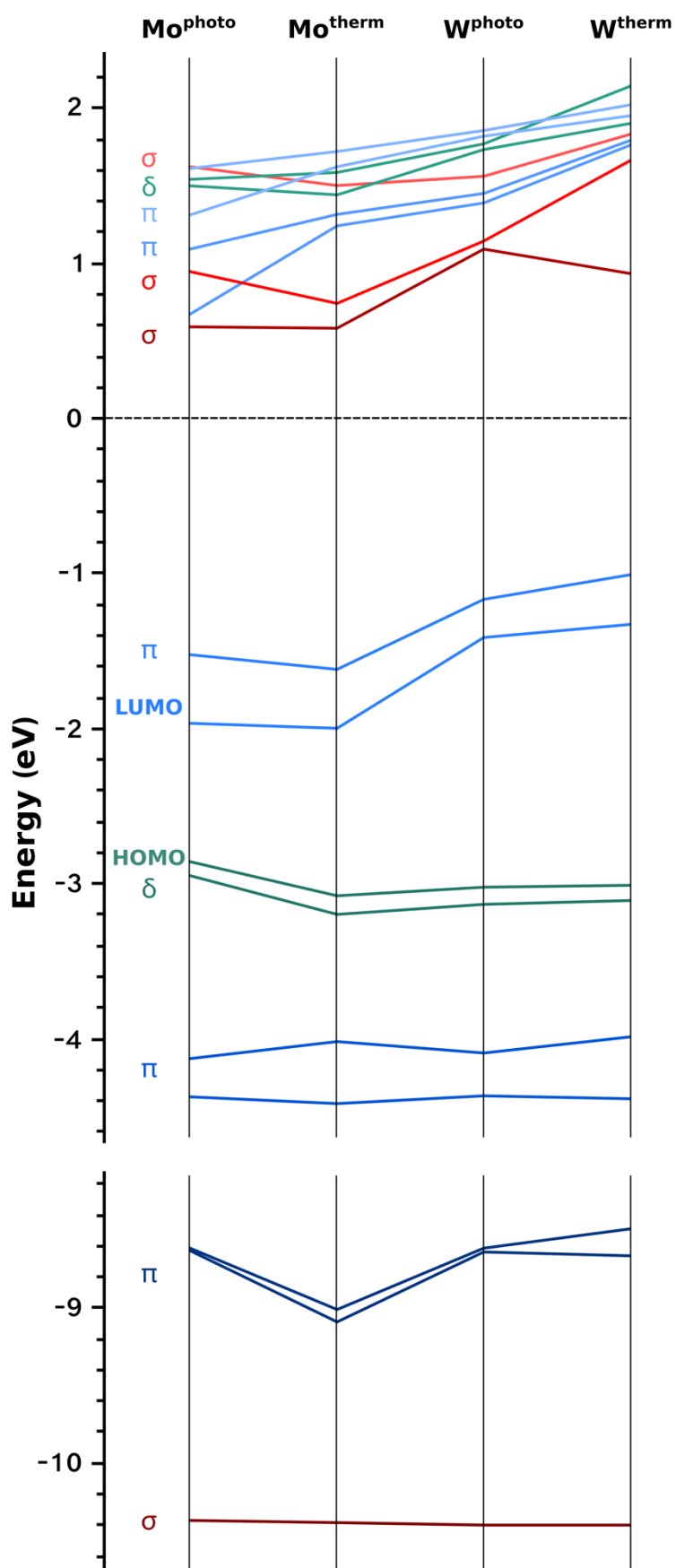


Figure S5. Molecular orbital energy diagrams in eV from a LC-BLYP calculation for the four complexes Mo^{photo} , Mo^{therm} , W^{photo} and W^{therm} , from left to right.

Table S2. All transitions discussed in the main text with their excitation energies (eV) and oscillator strengths. The contributions C (%) and the character of the donor and acceptor orbitals are listed.

Mo^{photo}				Mo^{therm}			
S_n <i>E</i> (eV), <i>f</i> _{osc}	C (%)	Don. Orbital	Acc. Orbital	S_n <i>E</i> (eV), <i>f</i> _{osc}	C (%)	Don. Orbital	Acc. Orbital
S₁₄ 4.64, 0.100	10	168 L _{Cp*}	175 π*-π-π*	S₁₅ 4.55, 0.075	11	187 π-π*-π	191 π*-π-π*
	28	171 π-π*-π	175 π*-π-π*		18	188 π-π*-π	192 core/L _{Am}
	32	172 π-π*-π	176 π*-π-π*	S₁₆ 4.58, 0.132	16	187 π-π*-π	194 Mo-L _{Am}
S₁₇ 4.88, 0.001	21	168 L _{Cp*}	175 π*-π-π*		15	188 π-π*-π	192 core/L _{Am}
	36	170 L _{Cp*} L _{Am}	176 π*-π-π*	10	189 δ/δ*	193 π*-π-π*	
				14	190 δ/δ*	208 L _{Cp*} L _{Am}	
S₁₈ 4.88, 0.000	14	167 core/L _{Cp*}	175 π*-π-π*	S₁₈ 4.76, 0.024	27	188 π-π*-π	194 Mo-L _{Am}
	10	169 L _{Cp*} L _{Am}	176 π*-π-π*		20	188 π-π*-π	200 core/L _{Am}
	17	170 L _{Cp*} L _{Am}	176 π*-π-π*				
S₁₉ 4.89, 0.006	20	169 L _{Cp*} L _{Am}	176 π*-π-π*	S₂₆ 5.08, 0.058	20	184 Mo-L _{Cp*}	191 π*-π-π*
	12	174 δ/δ*	186 σ*-σ-σ*		10	187 π-π*-π	194 Mo-L _{Am}
S₂₀ 4.93, 0.043	12	167 core/L _{Cp*}	175 π*-π-π*	S₂₉ 5.24, 0.126	15	188 π-π*-π	200 core/L _{Am}
	38	168 L _{Cp*}	175 π*-π-π*		26	188 π-π*-π	201 Mo-L _{Cp*}
	18	170 L _{Cp*} L _{Am}	176 π*-π-π*		11	188 π-π*-π	206 L _{Cp*} L _{Am}
S₂₁ 4.93, 0.033	39	167 core/L _{Cp*}	175 π*-π-π*				
	32	169 L _{Cp*} L _{Am}	176 π*-π-π*				
S₂₂ 4.94, 0.001	67	172 π-π*-π	177 core/L _{Cp*} L _{Am}				
S₂₅ 5.15, 0.036	44	171 π-π*-π	177 core/L _{Cp*} L _{Am}				
S₂₉ 5.30, 0.075	45	172 π-π*-π	180 Mo-L _{Cp*}				
	20	172 π-π*-π	181 L _{Cp*} L _{Am}				
S₄₃ 5.86, 0.009	24	168 L _{Cp*}	176 π*-π-π*				
S₄₄ 4.86, 0.004		numerous low contributors					

W^{photo}				W^{therm}			
S_n <i>E (eV), f_{osc}</i>	C (%)	Don. Orbital	Acc. Orbital	S_n <i>E (eV), f_{osc}</i>	C (%)	Don. Orbital	Acc. Orbital
S₁₂ <i>4.84, 0.039</i>	13	173 δ/δ^*	180 W-L _{Cp} *	S₁₆ <i>4.69, 0.171</i>	31	187 $\pi-\pi^*-\pi$	191 W-L _{Am}
	16	174 δ/δ^*	183 W-L _{Cp} *		11	188 $\pi-\pi^*-\pi$	196 $\pi^*-\pi-\pi^*$
	19	174 δ/δ^*	187 $\sigma^*-\sigma-\sigma^*$				
S₁₅ <i>4.94, 0.021</i>	47	169 L _{Am} L _{Cp} *	175 $\pi^*-\pi-\pi^*$	S₂₂ <i>5.10, 0.105</i>	18	188 $\pi-\pi^*-\pi$	196 $\pi^*-\pi-\pi^*$
	15	172 $\pi-\pi^*-\pi$	178 W-L _{Am}		18	189 δ/δ^*	192 L _{Am}
					11	190 δ/δ^*	191 W-L _{Am}
S₁₆ <i>4.95, 0.115</i>	18	171 $\pi-\pi^*-\pi$	176 $\pi^*-\pi-\pi^*$	S₄₂ <i>5.66, 0.034</i>	17	189 δ/δ^*	194 L _{Cp} *
	28	172 $\pi-\pi^*-\pi$	175 $\pi^*-\pi-\pi^*$		11	190 δ/δ^*	202 W-L _{Cp} *
S₂₀ <i>5.27, 0.034</i>	51	171 $\pi-\pi^*-\pi$	178 W-L _{Am}	S₄₄ <i>5.73, 0.043</i>	22	188 $\pi-\pi^*-\pi$	195 $\pi^*-\pi-\pi^*$
					11	190 δ/δ^*	202 W-L _{Cp} *
S₃₂ <i>5.77, 0.047</i>	14	171 $\pi-\pi^*-\pi$	181 L _{Am}				
	32	172 $\pi-\pi^*-\pi$	181 L _{Am}				
S₃₃ <i>5.77, 0.030</i>	18	171 $\pi-\pi^*-\pi$	181 L _{Am}				
	24	172 $\pi-\pi^*-\pi$	181 L _{Am}				
	10	173 δ/δ^*	179 W-L _{Cp} L _{Am}				

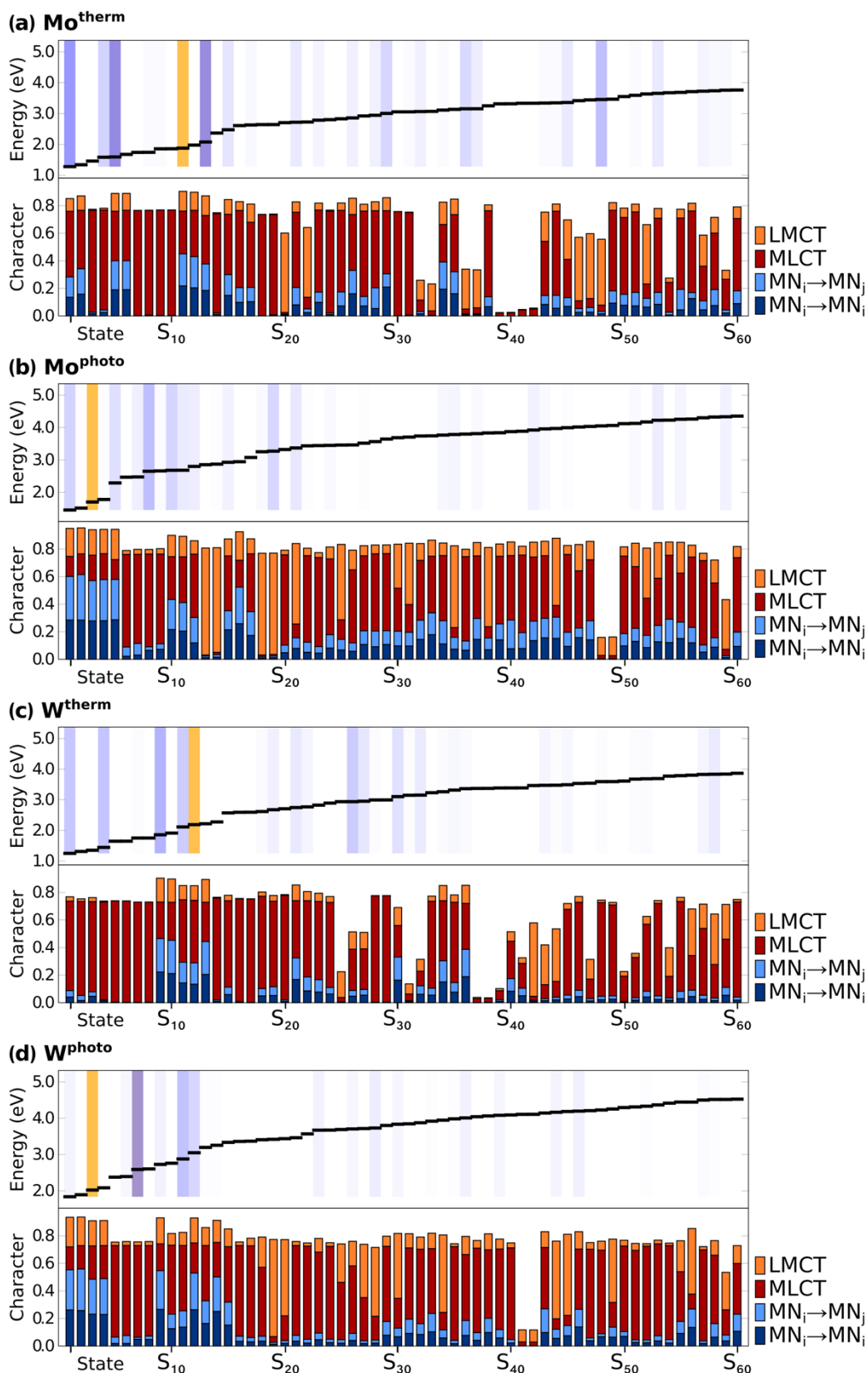


Figure S6. Character of states S_1 - S_{60} from a BLYP-calculation for (a) Mo^{therm} , (b) Mo^{photo} , (c) W^{therm} , (d) W^{photo} based on the fragmentation scheme M-N/N-M. Each upper panel shows the oscillator strength as coloured bars (yellow: most intense, shades of blue: less intense) and the energy in eV as a step function.

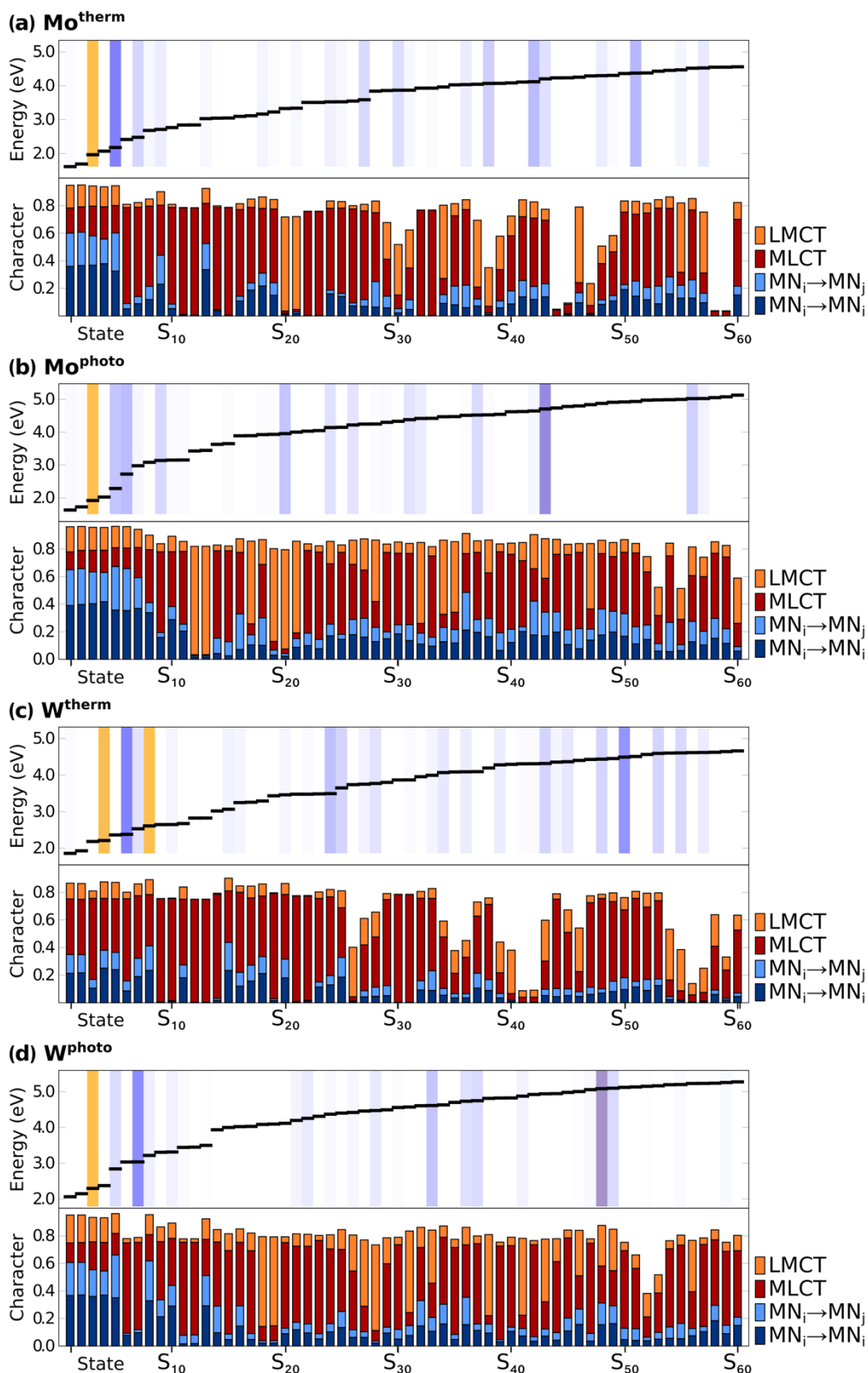


Figure S7. Character of states S_1 - S_{60} from a BLYP-calculation for (a) Mo^{therm} , (b) Mo^{photo} , (c) W^{therm} , (d) W^{photo} based on the fragmentation scheme M-N/N-M. Each upper panel shows the oscillator strength as coloured bars (yellow: most intense, shades of blue: less intense) and the energy in eV as a step function.

Cartesian Coordinates of all Complexes in \bar{A}

Mo^{therm}

110

Mo	4.333826199934	5.198417156440	4.833908225430
Mo	5.434629180140	0.704784189903	6.332966828169
N	4.737159807350	3.526849945590	5.393958204314
N	5.032232216455	2.376134967259	5.771512942044
C	3.584710185996	4.725692007186	2.428934156455
C	3.205084777690	4.063255755812	1.147594949271
C	2.259313797770	4.675446098217	0.296631894459
H	1.831019957873	5.649803233128	0.577409109360
C	1.878988817141	4.052471123477	-0.902680076535
H	1.144574934711	4.538954881205	-1.562811760990
C	2.435940992409	2.812041021882	-1.2609701166515
H	2.134669801008	2.323090768996	-2.200070817212
C	3.379949812091	2.199053209362	-0.418534753070
H	3.818584833787	1.227603903434	-0.693428046140
C	3.765174974045	2.822653142433	0.778346177641
H	4.495705753821	2.342114161921	1.443016086184
N	2.731031922719	4.953795977077	3.441238062715
C	1.413175781113	4.356011956099	3.555945169095
H	0.893518960000	4.361169846745	2.572293035804
H	0.815882836622	5.001657942540	4.234658912649
C	1.463704799911	2.929198748101	4.114073176210
H	1.993221780705	2.256554138416	3.408643919240
H	0.443805083419	2.524962893477	4.280053853777
H	2.023621955306	2.913554151912	5.071248984201
N	4.814133929989	5.135133907587	2.759425986368
C	6.012256839704	4.970831780254	1.965991907003
H	6.562673146770	5.938455134672	1.958083882194
H	5.748900139840	4.746443163829	0.908505788869
C	6.925844846872	3.882949191760	2.539807902843
H	7.145822241750	4.100252124821	3.604534753275
H	7.878434804824	3.819132003062	1.974894785040
H	6.430920182846	2.890834985081	2.511801196939
C	3.420627138044	7.432976042502	5.098241257318
C	4.771502881632	7.582538995918	4.677364894922
C	5.642273040875	6.881930014510	5.599939919310
C	4.774338213333	6.319650082698	6.637478171866
C	3.380637213337	6.628871103911	6.304125080567
C	2.215923909238	7.961167963464	4.379022170417
H	1.332993785990	7.314747261530	4.547297889713
H	2.385671799640	8.016372263257	3.286115043943
H	1.953784846223	8.982556255558	4.731908252330
C	5.227204927963	8.294428977921	3.438979005039
H	4.480823172870	8.215366192680	2.624430753439
H	6.180709833378	7.875622227745	3.062742977014
H	5.395674855309	9.375351827237	3.636798160969
C	7.142449795142	6.950511915157	5.632093258136
H	7.505500842832	7.863199791825	6.159497234175
H	7.568511036225	6.967413836490	4.609168235311
H	7.572659785857	6.073459892792	6.153433921256
C	5.232724246670	5.636989206044	7.895103888167
H	6.173396074620	5.076650825559	7.733386791696
H	4.475471074174	4.905496911206	8.239433173964
H	5.404793108487	6.361122762057	8.721934872894
C	2.182923886813	6.412318015011	7.184616225874
H	2.020952256084	7.265351211222	7.884249933613
H	2.294496147169	5.497331921551	7.798320015211
H	1.257713030548	6.295649777747	6.585962766676
C	6.182995879094	1.178489904600	8.738293858369
C	6.562729239558	1.839948765596	10.020086041278
C	7.509833216969	1.227842033196	10.869592800301
H	7.939111855726	0.254389262203	10.587242870616
C	7.890383097929	1.849770824514	12.069373093160
H	8.626076001769	1.363434178062	12.728172838480
C	7.332152959604	3.089004985527	12.429778254605
H	7.633778170585	3.577266249634	13.369140898040
C	6.386564016657	3.701759960057	11.589000803481
H	5.946992880408	4.672320248207	11.865444056713
C	6.001280116028	3.079287174526	10.391553123936
H	5.269395171672	3.559709206867	9.728350094727
N	7.036869937953	0.949856757460	7.726191039464
C	8.354916054191	1.547132239102	7.611287079148
H	8.875456072133	1.540452963865	8.594453956901
H	8.951187157414	0.901984208452	6.931259917661
C	8.304828898396	2.974642902714	7.054993200377

H	7.776562892619	3.646720763565	7.761851765096
H	9.324825983502	3.378398264397	6.888542084236
H	7.744012141678	2.991870797232	6.098386257928
N	4.953485879209	0.770028040464	8.407106160374
C	3.754950211240	0.933578206927	9.199981957741
H	3.204640797978	-0.034143045283	9.206718913298
H	4.017654964733	1.157087859941	10.257827916405
C	2.841756970299	2.021998968683	8.626523156544
H	2.623164961460	1.806115818181	7.561214211138
H	1.888454739771	2.084901209917	9.190345110859
H	3.336437154437	3.014184085114	8.656475118015
C	6.346408988649	-1.530711869066	6.071713078693
C	4.995240080864	-1.678844985556	6.492138052896
C	4.125380106490	-0.978742955951	5.568325812100
C	4.994125104400	-0.418328903120	4.530486986866
C	6.387478964121	-0.728071163923	4.864878853105
C	7.550533826722	-2.058830234391	6.791975173952
H	8.433762935115	-1.412820174002	6.623707921492
H	7.380217070776	-2.113144987228	7.884830970232
H	7.812504082194	-3.080567254292	6.439977051462
C	4.538253192173	-2.388823050158	7.731121913070
H	5.285213867176	-2.311087970634	8.545255818884
H	3.586044771018	-1.967258228160	8.107586016490
H	4.366999792497	-3.469446914328	7.533993862627
C	2.625183243487	-1.04642525276	5.535644883556
H	2.261805164258	-1.959459213864	5.009050019531
H	2.198717181809	-1.062086255960	6.558425970169
H	2.195724155289	-0.169688093373	5.013141088843
C	4.536640789095	0.262789951031	3.271691788845
H	3.597472882887	0.825865236247	3.432777047681
H	5.295645009108	0.991383942076	2.925070107205
H	4.362093790221	-0.462800959126	2.446654185815
C	7.585724113780	-0.513634254842	3.984596203634
H	7.747438035188	-1.367837991128	3.286329889906
H	7.475048808861	0.400494042297	3.369449877116
H	8.510747112122	-0.396699841422	4.583484088354

Mo^{photo}

108

Mo	6.942863187200	5.574366899574	14.733402180142
Mo	10.495910052502	4.367795145902	17.813648223844
N	9.158652156239	4.788103171934	16.676245228388
N	8.284763026291	5.106192145485	15.846359832580
N	5.416760981150	4.178476164123	15.306564112902
N	5.475102772853	6.231217155909	16.139190117682
N	12.029633998469	5.699391903955	17.154113980502
N	11.964627219316	3.595018029629	16.456421824090
C	5.102588977596	4.958534759342	16.357901191403
C	6.1512403941914	4.459483041950	17.653837753000
H	4.056773863689	3.461049929741	17.531161766428
H	3.737623889753	5.155364882994	18.028698978533
H	5.298251207060	4.383986911367	18.432060103165
C	5.396418878521	2.715474111598	15.380662157193
H	4.474647145197	2.401760904719	15.923480008140
C	5.328080928586	2.127321116551	13.971407050318
H	6.206099757785	2.466139021300	13.387155149951
H	4.413298039189	2.457909256724	13.443592961911
H	5.333537804377	1.019402819056	14.006742861120
C	6.617840933333	2.178220030247	16.144965029000
H	6.661129219833	2.587183025237	17.173016191836
H	7.549516218872	2.493655179894	15.633947026477
H	6.595450914750	1.070981196338	16.210587241294
C	5.478733987135	7.248078865815	17.194088029892
H	4.912378861329	6.856552790356	18.067437928223
C	4.772189224524	8.523390744132	16.721457074188
H	3.738883860783	8.307508122808	16.385167049158
H	5.320577195195	8.973825889304	15.870985095862
H	4.727982815497	9.273202096976	17.537602911903
C	6.913190102140	7.542855994016	17.657080022005
H	7.511786939373	7.933040075971	16.810803890086
H	7.420870054576	6.622942202013	18.005869213657
H	6.917246774931	8.289300192024	18.478305961310
C	8.076935011873	6.337115048624	13.048968024483
C	7.194843105388	7.430582044627	13.467347199441
C	5.852896169522	7.029693765280	13.087123820844

C	5.895926746702	5.737015877182	12.498950187885	N	4.322335115972	14.533583263388	-0.574962193761
C	7.260625129211	5.263924008094	12.479448947905	C	5.687044082027	11.044118102908	1.613706970445
C	9.579145923485	6.385424168863	13.033281094113	C	6.031467032197	9.796489074017	0.876603809236
H	9.965374934681	6.818236124111	12.083845032566	C	5.433286128282	9.503732873730	-0.366987068068
H	10.012781807710	5.372088896144	13.139491201405	H	4.702091231058	10.204950938153	-0.791377167398
H	9.971466823172	7.000522869428	13.866528882161	C	5.785213870198	8.338866108229	-1.065734933092
C	7.633842201032	8.806893221866	13.879067207899	H	5.318009098005	8.124341884902	-2.038989262617
H	6.882184019589	9.297862815134	14.527991976575	C	6.980905739631	8.901189961752	1.415632751080
H	7.796244052863	9.471173126777	12.998916852740	H	7.437420073039	9.120641883621	2.392800875539
H	8.582966048002	8.773964109193	14.448687886508	C	6.732785111120	7.451783001931	-0.525395219201
C	4.590902095030	7.819302951489	13.276612139344	H	7.007782122930	6.537483251363	-1.073241841546
H	3.875774077441	7.295195749711	13.943155864525	C	7.327092966749	7.733501093981	0.717453222422
H	4.079896263584	7.982030247329	12.303520796411	H	8.064323130498	7.037942051060	1.146896964480
H	4.792311189418	8.811458963171	13.719918737794	N	6.560915749126	12.026760036830	1.898329187237
C	4.684307171251	5.000704894315	12.009661790738	C	7.883236030004	12.148423178148	1.307273125803
H	4.941702160228	3.996945083917	11.624915005016	H	8.396373916587	11.161937829866	1.292269892439
H	4.190268879117	5.561844978331	11.187546833654	H	8.478581073042	12.808473898484	1.972826760351
H	3.935086909395	4.871613162775	12.817520183556	C	7.841432085687	12.741028141390	-0.105812166001
C	7.790882958154	4.072354958608	11.733900117802	H	7.307691212092	12.056662784816	-0.796731911981
H	8.096076940501	4.344812977978	10.697247178784	H	8.864100986724	12.906916212938	-0.502762837439
H	7.031841166556	3.270294231730	11.651419905887	H	7.290902005513	13.703803173853	-0.100536798006
H	8.677394023845	3.637887207748	12.235453785227	N	4.466621113862	11.392825801263	2.039022071606
C	12.324340746096	4.855699215366	16.149101078379	C	3.245087931828	10.637177094186	1.859184887774
C	12.878079227931	5.292285262754	14.815242087586	H	2.709402861020	10.602237107966	2.834259057858
H	13.702713068720	6.018279935152	14.950125134938	H	3.481315830846	9.584901784423	1.587415857182
H	13.259689050921	4.433529014596	14.235362778828	C	2.331343817372	11.279099260326	0.810483111973
H	12.090434876848	5.789498089206	14.214570875537	H	2.133212976042	12.335891097910	1.080984233876
C	12.091041843152	7.156060233986	17.003860979953	H	1.3679808688985	10.734910840304	0.731839964290
H	12.687889749577	7.393907944563	16.096041004799	H	2.814309075571	11.290340043450	-0.187956879541
C	12.803592238362	7.792256173115	18.201842070165	C	5.920535076312	13.577362091154	4.482193212768
H	12.230576887700	7.607292849272	19.131460972915	C	4.563140927370	13.176071107920	4.612648104901
H	13.817892201205	7.367537983890	18.336155193620	C	3.704779974617	14.142176781988	3.950447866579
H	12.895456879611	8.889271831750	18.066835195337	C	4.595635056345	15.199353860609	3.442803898195
C	10.684852789258	7.744332823091	16.813340765818	C	5.990167922976	14.816946038328	3.728498752721
H	10.170867160722	7.288390001112	15.945196913262	C	7.112251766251	12.810513876779	4.972476872718
H	10.060008760474	7.525144960669	17.701250976156	H	7.992335974253	12.978919244501	4.322068939816
H	10.732951826128	8.843137100827	16.665162140085	H	6.915503135895	11.720871244755	4.993999160215
C	11.911389871357	2.528145894629	15.453335127153	H	7.393812163480	13.123029026366	6.001806118213
H	12.818502865707	2.604144214422	14.809897926549	C	4.083059156001	11.913853191452	5.265173924756
C	11.947965015277	1.166284960529	16.146755764811	H	3.904278209958	12.067378094931	6.351379021371
H	12.874734827718	1.043631199401	16.739096139429	H	4.819326746334	11.092890253239	5.159932741007
H	11.083803750697	1.078327234909	16.834070226193	H	3.129175888853	11.569647203953	4.819786072186
H	11.892907826759	0.345161152433	15.404090950715	C	2.207291969952	14.213075949809	4.054760873433
C	10.667694216959	2.659724230061	14.558651977205	H	1.752577897545	13.202694015317	4.028190883761
H	9.750412023415	2.599002199093	15.177760253786	H	1.775447879892	14.788022797429	3.212723980457
H	10.642429178382	3.639916073321	14.044158867687	H	1.878191876204	14.704547203109	4.999906895023
H	10.641062842726	1.860581915712	13.789545763508	C	4.160932879964	16.506887870795	2.841671772762
C	9.346389956399	3.915858195698	19.599670123525	H	4.004429237749	17.292972736526	3.613295811810
C	10.10288935315	2.691469044052	19.333272771153	H	3.217787148375	16.397464070070	2.272063794407
C	11.485601156558	2.997957923127	19.615480881371	H	4.924402826781	16.880249937182	2.130567089797
C	11.596720970367	4.359614065633	20.006601077880	C	7.201661025064	15.695894102777	3.591231766413
C	10.283118884666	4.974732874934	19.984924919406	H	7.356373931468	16.335918110125	4.491210922268
C	7.847605996651	4.017136900207	19.650005992628	H	7.112941813383	16.368630789304	2.716238243546
H	7.453595963186	3.761649066035	20.658654871629	H	8.121725103406	15.094757743926	3.448676178127
H	7.503242843510	5.340600096294	19.404095208308	C	3.234995992513	17.587621803833	-1.616605803415
H	7.376846740878	3.027963968326	18.922399975507	C	2.890825989067	18.833317482333	-0.876068811037
C	9.503888981019	1.328341259617	19.131890135663	C	3.490227175719	19.122935927433	0.367636897730
H	10.224147901215	0.630351176414	18.662587175679	H	4.222171917104	18.420842074664	0.789242995553
H	9.190111214515	0.875287216240	20.100555969262	C	3.138606885785	20.285779119134	1.069915962536
H	8.609588955399	1.367286059257	18.480141148009	H	3.606856253867	20.497815151036	2.043214742950
C	12.652403123259	2.062333916956	19.501169070397	C	1.940359090239	19.729594780054	-1.411597774557
H	13.417020855530	2.451732170696	18.798111056679	H	1.482805981891	19.512597182266	-2.388827812753
H	13.146973238529	1.930437016820	20.487529003670	C	2.190077834042	21.173945980438	0.533003200510
H	12.343536121626	1.063176890270	19.143278030062	H	1.915308897626	22.086661903500	1.083596781955
C	12.894444034357	5.022584786029	20.365166819207	C	1.594470848266	20.895282828646	-0.709908742383
H	12.743925916005	6.070735159136	20.681840772794	H	0.856433160036	21.591646750164	-1.136651034585
H	13.391806088792	4.485422252342	21.200939841087	N	2.361776800962	16.603964907947	-1.899780191254
H	13.600226781729	5.030609229833	19.509422118772	C	1.040975787966	16.480657083740	-1.305517844868
C	9.909519746872	6.309639107502	20.563721002336	H	0.526684824157	17.466531232299	-1.289640939866
H	9.751370892590	6.254315213651	21.665614087674	H	0.444969802544	15.819744862842	-1.969642171667
H	10.695508831521	7.068572946941	20.381177076875	C	1.086561762081	15.888404023368	0.107629889851
H	8.974256110407	6.695900927687	20.113786988019	H	1.621121802058	16.573346183143	0.797370099743
				H	0.064886126741	15.721668209867	0.506781938645
				H	1.637876082938	14.926088845934	0.101385069136
				N	4.454923121595	17.241497019630	-2.045763260581
				C	5.675537122747	17.999023247586	-1.866703967305
				H	6.209348906094	18.036648808345	-2.842699964157
				H	5.437794189266	19.050395780963	-1.592792827210
				C	6.592437250317	17.357311164814	-0.820624793950
				H	6.793563234876	16.301836978580	-1.093967068503

Wtherm

110

W	4.992924930400	13.456567858879	2.219641908589
W	3.931928250395	15.176497107693	-2.221269128630
N	4.604845915541	14.102278934122	0.573856742488

H	7.554177212081	17.904335974891	-0.741787967394
H	6.110528229907	17.342087264537	0.178263939871
C	3.002552240003	15.049724760036	-4.482353024297
C	4.359436791254	15.452179933218	-4.615198739241
C	5.219475765064	14.488331200117	-3.952035927503
C	4.330363264017	13.431389076195	-3.440999932953
C	2.935129237531	13.811536253268	-3.726070892053
C	1.809319986424	15.814136113180	-4.973105125716
H	0.929730029972	15.644531100634	-4.322078994184
H	2.003764049860	16.904193090990	-4.994909874261
H	1.528051165858	15.500601768211	-6.001920949677
C	4.837731001877	16.713698806540	-5.270494801995
H	5.012247837647	16.559446813520	-6.357272997507
H	4.102693219471	17.535433814359	-5.162716213337
H	5.793473797877	17.057566120599	-4.828900091945
C	6.716963769729	14.419131220443	-4.057351196067
H	7.170423162879	15.430129117252	-4.033157741420
H	7.150229759057	13.846430201067	-3.214513128736
H	7.045942152710	13.926171920719	-5.001751077736
C	4.767002229130	12.125925207406	-2.836822921630
H	4.918725813254	11.336484828740	-3.605954006657
H	5.713248939397	12.236948181778	-2.272761250021
H	4.007170905076	11.756388034176	-2.119856013100
C	1.724927857108	12.931310754940	-3.585531998264
H	1.570298031532	12.288876874400	-4.483800853251
H	1.815430925295	12.260857997420	-2.708974756626
H	0.804138805935	13.531504119933	-3.443670161352

H	5.812509891056	6.168583736717	-0.450282742124
H	4.405009006761	6.615880860802	-1.461919885050
C	1.791793106760	7.170281872553	0.061598877670
H	1.879706910668	7.347265203481	-1.031669147687
H	0.837890789231	7.614465846882	0.399563748693
H	1.724834192735	6.073342944620	0.213677010551
C	1.767264153737	9.669447904318	2.154263117830
H	1.795296260148	10.002852854987	3.209843139513
H	0.794826873884	9.163814809481	1.995433741606
H	1.771473229575	10.582329989036	1.514924924196
C	5.581018128417	10.029014849000	7.439926785667
C	5.782563750535	11.287868785697	6.638423811610
H	5.343360921651	11.168861055815	5.627578847025
H	5.278557875738	12.147242054528	7.119990983517
H	6.853766142963	11.527773937417	6.518818111436
C	3.165722986378	10.403415161149	7.737466219108
H	3.428948979462	11.474211145451	7.587712761882
C	2.245730876142	10.321048193165	8.956622866116
H	2.742571161810	10.719658893633	9.862136157642
H	1.313786768561	10.896125218389	8.783273924534
H	3.428948979462	9.266015869935	9.149392083559
C	2.455037940971	9.900405197935	6.470896878121
H	2.174970881938	8.835606908574	6.596103919475
H	1.542239995435	10.496120135870	6.263934068506
H	3.117511763931	9.950200777066	5.585284884576
C	7.799424937307	9.080148182173	6.923672045088
H	8.160246032070	10.133291871802	6.890525969742
C	8.222780181236	8.266438147335	7.715413815610
H	8.479488082846	7.217241061629	7.799505901426
H	9.806642927071	8.272773986538	7.204722844627
H	8.953784888530	8.671973132107	8.736868254860
C	7.673036772333	8.562810215765	5.482184751976
H	6.940406746410	9.158805088464	4.904603130833
H	8.648941750698	8.599495957729	4.956015875636
H	7.300539910749	7.519092231295	5.489747753219
C	4.499441745199	5.620414845428	8.499423777348
C	3.632956863319	6.537383766040	9.256890208276
C	4.512638896612	7.277574147320	10.141208892624
C	5.857622251533	6.884957966728	9.912829750564
C	5.899351052680	5.874990907200	8.873430910801
C	4.026685903665	4.466080823891	7.661361005511
H	3.873470039698	3.548199072524	8.271152058270
H	3.066943056839	4.699478153803	7.161136102159
H	4.760373225731	4.221233156665	6.868293116803
C	2.138493106632	6.423222241404	9.367524766547
H	1.678927008029	7.372874207269	9.704974218930
H	1.679499048635	6.167709006725	8.392815199587
H	1.840242988146	5.634189858397	10.095960004417
C	4.107400780278	8.323233153939	11.138533907674
H	4.580924987178	9.301878212099	10.918188205432
H	3.013089746563	8.476077006299	11.150997090243
H	4.420051928418	8.027576003973	12.162833203815
C	7.032904812826	7.470548156358	10.639554158389
H	6.945015880249	7.293396017887	11.732798899947
H	7.986455227485	7.025778911991	10.301374970579
H	7.100586053796	8.567470150620	10.487694046534
C	7.055367857869	4.971103248183	8.547311143319
H	7.027223036704	4.637605162318	7.491767105688
H	8.028232183762	5.475871138218	8.706244238284
H	7.050230075959	4.058279902139	9.186723950944

Wphoto

108

W	3.887540862749	7.047670974783	2.985776262855
W	4.937099905694	7.594586245169	7.715318034528
N	4.278056209662	7.278930957786	4.736245918241
N	4.546439035037	7.363352191851	5.964894946741
N	4.405194747975	9.658282264364	7.984652849775
N	6.503386773678	9.061804782014	7.609853008803
N	4.420714987511	4.984260182125	2.716359954313
N	2.322100149186	5.579542253070	3.090815830073
C	3.245022843027	4.612906872575	3.261012991960
C	3.044196901968	3.354025947839	4.062642968557
H	3.483587059598	3.473221006468	5.073384743578
H	3.548472127984	2.494865937440	3.580965198605
H	1.973135799865	3.113626015391	4.182512199001
C	5.660465096341	4.239689800755	2.963885258419
H	5.397633869485	3.168703841822	3.113007936364
C	6.581181121054	4.322762162012	1.745344044551
H	6.084611244960	3.925408257511	0.839145997665
H	7.512519849862	3.746689754383	1.918708861451
H	6.858167839320	5.377623031814	1.553751188133
C	6.370243131943	4.742455813258	4.231067915837
H	6.649885261646	5.807446193960	4.106518112626
H	7.283208826667	4.147075844521	4.438266209329
H	5.707299928764	4.691943198954	5.116287789041
C	1.025843964530	5.560516743436	3.776543818063
H	0.666362217385	4.506968762389	3.811089038055
C	0.001707125805	6.371734882608	2.983230920288
H	0.343609075561	7.421269054222	2.897678834442
H	-0.982335011118	6.364873041221	3.493574750996
H	-0.128401155229	5.964518172540	1.962319946073
C	1.151081168988	6.080086779481	5.217326776256
H	1.884622967311	5.486117068113	5.795848745371
H	0.175132798088	6.042576050185	5.743359124865
H	1.521920118251	7.124384213038	5.208358809417
C	4.323735848150	9.022289000122	2.201962096700
C	5.190973220079	8.106136070828	1.444377130069
C	4.311912970053	7.365447204580	0.559852066593
C	2.966587766629	7.756833048067	0.788348156825
C	2.924030803088	8.766615953913	1.827895166218
C	4.795495248925	10.176908248196	3.040203201270
H	4.948142247349	11.094939227547	2.430490995922
H	5.755312180566	9.944162864655	3.540593207924
H	4.061414748162	10.421135190509	3.833108103385
C	6.685351779228	8.221488773451	1.333836765348
H	7.145628033699	7.272325767364	0.995995192623
H	7.144117761831	8.476968140787	2.308662751302
H	6.983006044132	9.011046100290	0.605728029840
C	4.718053862774	6.320362884453	-0.437702082206
H	4.245486937518	5.341230983223	-0.217462744590